

SARA RICHARD

is an Eisner and Ringo Award–nominated artist from New Hampshire. Her art is inspired by Art Nouveau, Art Deco, funerary imagery, and the natural world. Her creations tend to skew into the macabre and unknown with a balance of sweetness and sentimentality, honoring the Victorian-era theme of *memento mori*. As a native of New Hampshire, Sara grew up surrounded by trees and plenty of wild mushrooms. When not making art or writing, she's watching horror movies, cleaning forgotten gravestones with her mom, and collecting possibly haunted curios from the nineteenth century. Her online gallery can be found at SaraRichard.com.

MIDNIGHT MAGIC
A TAROT DECK OF MUSHROOMS
RICHARD

MIDNIGHT MAGIC



A TAROT DECK OF MUSHROOMS

SARA RICHARD

MIDNIGHT MAGIC



A TAROT DECK OF MUSHROOMS

SARA RICHARD

Adams Media

New York London Toronto Sydney New Delhi



Adams Media

An Imprint of

Simon & Schuster, Inc.

100 Technology Center Drive

Stoughton, Massachusetts 02072

Copyright © 2023 by

Sara Richard.

All rights reserved, including the right to reproduce this publication or portions thereof in any form whatsoever. For information address Adams Media Subsidiary Rights Department, 1230 Avenue of the Americas, New York, NY 10020.

First Adams Media trade paperback edition March 2023

ADAMS MEDIA and colophon are trademarks of Simon & Schuster.

For information about special discounts for bulk purchases, please contact Simon & Schuster Special Sales at 1-866-506-1949 or business@simonandschuster.com.

The Simon & Schuster Speakers Bureau can bring authors to your live event. For more information or to book an event contact the Simon & Schuster Speakers Bureau at 1-866-248-3049 or visit our website at www.simonspeakers.com.

Illustrations by Sara Richard

Manufactured in China

10 9 8 7 6 5 4 3 2 1

Library of Congress Cataloging-in-Publication Data has been applied for.

ISBN 978-1-5072-2013-9

Many of the designations used by manufacturers and sellers to distinguish their products are claimed as trademarks. Where those designations appear in this book and Simon & Schuster, Inc., was aware of a trademark claim, the designations have been printed with initial capital letters.

This book is intended as general information only, and should not be used to diagnose or treat any health condition. In light of the complex, individual, and specific nature of health problems, this book is not intended to replace professional medical advice. The ideas, procedures, and suggestions in this book are intended to supplement, not replace, the advice of a trained medical professional. Consult your physician before adopting any of the suggestions in this book, as well as about any condition that may require diagnosis or medical attention. The author and publisher disclaim any liability arising directly or indirectly from the use of this book.



The consumption of wild mushrooms that have been misidentified may cause serious illness or even death. Never, under any circumstances, should wild mushrooms be ingested that have not been professionally confirmed as edible. It is the sole responsibility of the reader to positively identify any wild mushrooms they harvest.

The author and publisher do not accept liability for any injury, loss, or incidental or consequential damage incurred by reliance on the information provided in this book. The information in this book is for entertainment purposes only.

For Kara





Acknowledgments

Carmen De Luccia-Santangelo,
Melinda Christian, Shane Murphy,
Kristin Harris, Amanda Dufresne,
and of course, Nala.



CONTENTS

Introduction • 9

**Part 1: How to Use
Your Midnight Magic Deck • 11**

About This Deck • 13

How to Read Tarot Cards • 15

Spreads • 18

Part 2: The Cards • 25

Major Arcana • 27

Minor Arcana • 73

Major Sources Cited • 135

INTRODUCTION

Mushrooms are a magical, ethereal part of nature. They offer potent medicine, culinary delicacy, mind-expanding experiences, folklore, and even solutions to some environmental problems. They are a special type of midnight magic we can all benefit from. Not quite in the animal kingdom but not limited to the world of plants, mushrooms exist in between, like the veil fluttering between our earthly plane and the spiritual one.

We can find a connection to this spiritual plane through the vast wisdom of the tarot. In connecting certain mushroom species with corresponding tarot cards, you can learn even more about the natural world—and yourself. Each tarot card offers insight that you can apply to your life. In this deck, the cards' insights are also connected to a specific mushroom species and its tendencies. The wine cap mushroom (*Stropharia rugosoannulata*) is a strong and sturdy leader—like the King of Wands—that is clad in fiery colors and reigns over the smaller cohabitants in the garden. Seeing that card might help you determine your leadership style. The chaga (*Inonotus obliquus*) mushroom is so tough that you need a hacksaw to harvest it—much like the Strength card showcases the power presiding within you all this time.

You'll discover what insights each tarot card can offer your situation while learning about dozens of types of mushrooms from around the globe. This package

includes a full tarot deck, including both Minor and Major Arcana cards, along with instructions about how to do a tarot reading and how to use spreads to gain helpful advice about your life.

Mushrooms can light up the night with bioluminescence, change their shapes or colors, transform other materials around them, and shift human consciousness—just imagine the lessons they can offer you through the insightful lens of a tarot deck. Listen to the vast network of subterranean threads that mushrooms grow from (called *mycorrhizal networks*), which unite the environment like a switchboard. May this tarot set and its enchanting teachers help you unearth new discoveries about yourself and the world around you.



PART 1

**How to Use Your
Midnight Magic Deck**



About This Deck

This tarot deck and guide strive to encompass the spirit of each type of mushroom in connecting it to its corresponding tarot card. The deck's illustrations embrace the texture of a black velvet canvas highlighted with organic swirls that will reveal new details in each viewing. Definitions within this guide are aligned with the classic Rider–Waite tarot set. As with other tarot sets, the interpretations vary slightly, but the symbolism and fundamental meanings remain the same.

Making a Spiritual Connection to the Deck

As you use this deck, connect yourself to the spirit of this set—try using it outdoors in a forest, surrounded by foraged mushroom species, or while wearing a mushroom necklace. You could also draw a small mushroom sketch to keep nearby or sip some warm mushroom tea. Open yourself up completely to productive messages that want to come to you.

Before you begin a reading, promise yourself that you'll keep an open and expandable mind. Compel yourself to rely on your intuition—that initial gut feeling you have (even if doubts try to sneak in later). You know yourself best, and if you're feeling genuinely guided by something, believe yourself.

Once you've found a comfortable space to do your reading, prepare for your session with a short meditation.

Hold your cards in a stack or a fanned shape (like a mushroom cap) near your heart or third eye while concentrating on forming a bond with the set. This bond will always have your best interest held above all. You could also think or say aloud, "I am ready to learn." This same sentiment also applies to readings you give to loved ones. It is understood that the energy of reading for another is done to support someone special in your life who needs your help.

Finally, keep in mind that what appears before you is not set in stone. The world is made of fluid energy and the stories the cards spell out can flow in a different route than what you see in one reading. Heed warnings, but do not fear them; celebrate windfall cards, but don't rely on them. Listen to the story the cards lay out for you and let their initial impact sink in deeply. Know that everything is going to be okay. Mushrooms have dealt with global hardships that we can't even comprehend, and they're still thriving. Likewise, you can overcome challenges and live a happy, fulfilling life, guided by the tarot!

How to Read Tarot Cards

Engaging with this tarot deck is easy, but there are some things to keep in mind. First, compose yourself in a quiet and comfortable space. Sit with the soles of your feet evenly on the ground. This is called *grounding yourself*—in other words, balancing your mental, emotional, and physical states in productive harmony while connecting to the natural world. (This is beneficial to do as a daily exercise even if you aren't reading tarot!) Allow yourself to feel nourished and powerful as you imagine connecting to the vast underground mycorrhizal networks of threads that sustain mushrooms.

Shuffling the Deck

Next, shuffle the cards. Shuffling the deck kick-starts the energy of the actual reading. One recommended shuffling technique is to cut the deck into thirds with your left hand. (If you are doing a reading for someone else, let them cut the deck.) The left hand is known as the “hand of fate” in relation to doing a reading. While this process is underway, keep your question to the cards in mind; repeat the question and meditate on it. There is a pale new moon shape in the center of the back illustration of each card for you to focus on as you consider your query. Pick a stack with your left hand, intended question still in mind, and collect the other two-thirds under the first (moving from left to right).

Alternatively, if you're feeling more playful, spread out all your cards on a table and swish them around with your left hand. Let cards pivot into whatever directions they need to, then collect the cards back into a clean stack. Repeat this as many times as you feel is right if you want to keep playing or to connect more deeply with your cards.

Interpreting the Cards

Keep in mind, there is no right or wrong way to interpret the cards. That is left up to your intuition. If you feel comfortable and connected to a particular deck, you will receive genuine results. Before you start analyzing, thoughtfully look over the cards and try to take in the big picture even before beginning your interpretation. Let this quiet moment fuel your intuition; graciously let the cards speak first.

Try to dismiss any negative feelings that arise about being "wrong." If an answer seems off, perhaps that message just needs a little more time to come to fruition. Or maybe you haven't seen the message yet. (Keep your eyes open.) You are the interpreter here, so allow that confidence to guide you to find answers that help yourself or someone important to you.

Additional Tips

Here are a few final suggestions to keep in mind while reading the cards:

- Consider keeping a notebook to record what is revealed in the cards. Or, make a video recording of the session. This will create a tangible map to guide you (or the querent).
- After doing a reading for someone else, make sure to mentally disconnect yourself from them to avoid having their energy stick with you. Imagine a cord that is responsibly unbound or thoughtfully severed.
- When you finish a session, respectfully store your cards and thank the energies around you for their help. Wash your hands to further complete the session; this is a good habit after handling wild mushrooms too!

Start simply but embrace the idea that you are more than capable of becoming a wildly talented tarot card reader. Just like the interpretations, the energy you put into this type of divination is solely your responsibility and thus will be your ultimate reward.

Before we begin working with the guidance of mushroom energy, we will review various card spreads you might use for your tarot readings.

Spreads

Spreads are different ways of placing tarot cards onto a surface for a reading. The order, number, and placement of the cards helps tell the story of the reading. Spreads range from very simple to more complex, depending on what type of reading you're looking for.

There are several different types of readings. A *reflective* reading is a good choice when you are looking for an honest reflection of where you currently are (in relation to mind, body, or spirit). A *guiding* reading, on the other hand, asks the cards to guide you toward what state of mind and body you need to be in to best deal with the issue you are working with.

No matter what type of reading or spread you're using, be sure to turn cards over sideways, from left to right, to maintain their intended orientation. In addition, always pull cards from the top of the deck and place them facedown in front of you.

One-Card Spread



Simple yet effective, a one-card spread allows you to become familiar with the deck. This method focuses your energy on choosing one optimal card. Recognize the symbolism of the card as deeply as you want to. The simplicity

of the spread doesn't mean you can only use it for simple questions, however. A single card can be as illuminating as a ten-card spread in some cases! For this spread, you can simply ask, "What do I need to know today?" or "What theme can most successfully guide me today?" Whatever card you pull is meant for you, even if it seems disconnected to your situation. Give the advice time to manifest itself. You might be surprised by the way it appears to you.

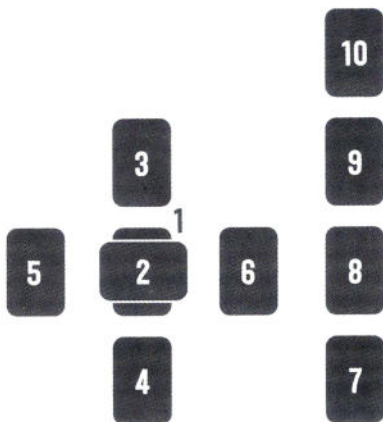
Three-Card Spread: Past, Present, Future



The three-card spread is probably the archetypal image of tarot spreads. With your query in mind, lay three cards facedown, from left to right. Card 1 represents the past, Card 2 represents your present situation, and Card 3 will advise future actions. Turn each card over from left to right and study the message before you.

Feel free to add *magnifier* cards if you'd like clarification in your reading; simply pull three additional cards to guide you in interpreting the message before you. These magnifiers can help demystify each of the initial three cards you've laid out. Place these additional three cards beneath your spread and let this row of messages clear up what the cards above them are trying to tell you.

Celtic Cross Spread



The Celtic cross is a ten-card tapestry of a story. Named after the cross made by Cards 1 and 2, this spread is a bit daunting. But you can sit with these cards for a while and meditate on the message before you.

Card 1 represents your current situation or circumstances, while the card you lay crosswise over it (Card 2) will show you, similarly, what is crossing you. This will be the central plot of the story illustrated before you.

Card 3 represents your consciousness, or what you can hope for at this time. Place this card north of the

cross. Card 4 is placed south of the cross. This card represents the subconscious or hidden factors swirling around you. Cards 3 and 4 are linked to the mind.

Place Card 5 to the west of the cross. This card represents past events that have influenced your current self or situation. This card may seem to be an obvious assessment, because the past has already happened and you know how events tied to that card have played out already. But! Card 5 will also help illustrate an individual's personal beliefs and ideals. It can show you the vibe or theme of the querent's life and offer a helpful layer to the evolving picture before you.

Card 6 is the action card. Place this card to the east of the cross; this is your next move.

Now, you will be creating a single column of cards situated to the right of Cards 1–6. Begin by laying down Card 7 (at about the same level as Card 4). This card represents how you see yourself. Card 8 is placed directly above Card 7 and represents your environment.

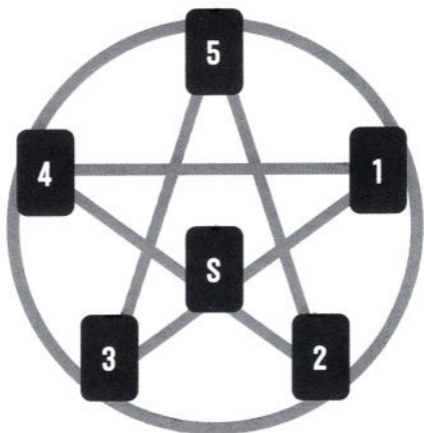
Place Card 9 above Card 8. This is a guidance card and can be a reflection or magnifier card of Card 1; it illustrates your hopes and fears.

Finally, Card 10 reveals the outcome of your query. Look at how Card 10 and Card 6 relate. Your action card (6) is linked to your outcome card (10) and may offer advice on what you need to do to reach your goal.

Take as long as you need to sit with this spread. Note the overall themes before you, be they similar elements, card numbers, mostly Major or mostly Minor Arcana; these are also messages for you.

Each card you read reflects on the card(s) previous to it. It may feel like you're reading backward at some points, but this spread is interconnected and can take a bit of time to interpret. Let your intuition guide you, but don't overanalyze the reading either. What you interpret first is the paramount message.

Six-Card Pentagram



The six-card pentagram spread will help you paint a portrait of yourself from an elemental point of view, allowing you to more easily view your true self. It might help you see where imbalances may be hiding in plain sight. You can

also use this spread to help someone in need of this type of advice—just be clear in your preparatory intentions and as you lay down the cards for them.

For this layout, you only need the twenty-two Major Arcana cards. The spread is laid out in a pentagram formation, an ancient symbol known for protection as well as the design that represents the tarot's Pentacles suit. Choose a Major Arcana card that represents you or the querent (for example, The Devil card is used to represent issues with addiction, while The Hermit represents someone looking for advice on their inner spiritual journey). Place this card faceup in what will be the middle of the star (this is your *significator* card; it represents yourself or the querent as best you can interpret). Then place cards clockwise starting at the east point of a star layout. Flip the cards horizontally from left to right with your left hand as you place them. Messages will be in relation to:

- **Card 1:** Earth (the east point)—This card represents the problem of the query. What's moving you forward or keeping you stuck? Why has this situation become an issue that needs addressing?
- **Card 2:** Air (the southeast point)—This card represents how other people or external forces affect your situation. Are people helping or hindering the querent?
- **Card 3:** Fire (the southwest point)—This card represents internal conflicts at play. Any self-doubts will appear here.

- **Card 4: Water (the west point)**—This card represents what your higher self is advising you to do. What can you learn to fix your situation?
- **Card 5: Spirit (the north point)**—This card represents *all* of you and shows how the situation will be resolved based on the other cards laid out if no action is taken. Therefore, heed this advice and know that, for better or worse, your final message is not set in stone. You can make change happen, so decide on how best to act.

Next, you'll learn more about each suit and card, which will provide guidance in relation to these elements and what messages they represent.



PART 2
The Cards



Major Arcana

The Major Arcana (the “Majors,” as they are sometimes called) set the scene for your reading. They represent major archetypal traits and carry the most important life lessons. These cards are the roots that run beneath the reading, and their interpretations can be influenced by the Minor Arcana cards that surround them. It’s important to pay close attention to the twenty-two Major Arcana cards. If one comes to you in a *reversed* position (meaning, you deal it upside down), it may indicate you are not paying close enough attention to a message trying to come through.

The Major Arcana begins with The Fool card, and the subsequent cards illustrate the story of the Fool’s journey through life. We all begin as “a Fool,” a newborn, a simple soul that has yet to be influenced by the environment. This innocence renders us unaware of the hardships to come—but we are also unaware of how those hardships can shape us into better versions of ourselves. The first step in an endeavor is always the hardest, so gather your strength and leap in with both feet forward. Let your courage and confidence be your protection. You will have learned so much when you finish the Fool’s journey with The World card (XXI), the card of achieving wholeness.



CHICKEN OF THE WOODS
Lactiporus sulphureus

THE FOOL

0. THE FOOL

• *Chicken of the Woods* •

Chicken of the woods is one of the easiest mushrooms for beginner foragers to identify and is therefore a good representation of the young and innocent Fool. Its bright orange and yellow hues stick out like a beacon in early and waning summer forests. Versatile in its culinary applications, from sandwiches to soups, and generous in its medicinal value, this mushroom will offer the burgeoning forager a solid springboard to start their journey of becoming a mystical mycologist.

Upright

New Beginnings • Risk-Taking • Independence

You've discovered a new passion! Nurture that childlike wonder with confidence and dive deep. Go experience the world for yourself, even if it's a dreary day. You are going to become the powerhouse you know yourself to be with hard work and a keen eye. The only thing stopping you is *you*. You've got this!

Reversed

Naiveté • Recklessness • Bad Decisions • Distraction

Be aware that even though a situation may seem easy to handle, if you don't pay close attention and think about what you're doing, it could spell trouble. Becoming distracted by minutiae or allowing complacency to creep in will usurp your goal.

I



LITTLE BIRDS OF THE WOODS
Psilocybe hoogshagenii

THE MAGICIAN

I. THE MAGICIAN

• *Little Birds of the Woods* •

Little birds of the woods are used in divinatory ceremonies by indigenous tribes in Mexico. In the native Aztec language, Nahuatl, they are known as “the divine mushroom that describes or paints.” These little psychoactive mushrooms grow in subtropical coffee plantations in the clay-heavy soil and bruise blue—almost like magic—when injured or cut. This color change echoes The Magician’s call for transformation and action.

Upright

Manifestation • Inspiration • Action

These small mushrooms grow among coffee crops, and coffee can help provide the jolt you need to get that project off the ground! Begin some preliminary planning to create something you feel is needed in the world. You can always adjust these plans later—for now, just take the first steps.

Reversed

*Misinformation • False Visions •
Poor Planning • Creative Blocks*

Having trouble laying the foundation for a new project? You may feel like your mind and body are stuck in heavy, muddy soil. Have no fear: These little mushrooms *thrive* in a constrictive and soggy environment. Do some more research, meditate, read, or go for a walk. Ideas will germinate like spores in fertile ground.

II



FAIRY RING CHAMPIGNON
Marasmius oreades

THE HIGH PRIESTESS

II. THE HIGH PRIESTESS

• *Fairy Ring Champignon* •

This psychic card taps into otherworldly realms and divine knowledge. Fairy ring champignons spread their mycelium (a network of threads that mushrooms grow from) beneath a grassy area to form the ever-growing—sometimes centuries-old—ring of fruiting bodies that can appear almost supernaturally overnight. Ancient folklore warns that fairies and elves play within the walls of the ring, a dangerous place for mortals to disturb.

Upright

Inspiration • Divine Intuition • Balance • Subconscious

You are at the summit of your psychic ability. Work with your higher self and internal divinity to create your aspirational goals. Pay close attention to your intuition, inner wisdom, and empathy. The High Priestess tempers your desires with a balanced breath of spiritual life. Go on, tune in and feel what you feel.

Reversed

Secrets • Bad Advice • Imbalance • Blocked Intuition

Perhaps you are being swayed by others' advice and opinions. The High Priestess invites you to recognize your own intuitive powers with confidence. Take some quiet time to meditate and be open. Let ideas flow in. The High Priestess can help inspire you to create something beautiful.

III



HEN OF THE WOODS
Grifola frondosa

THE EMPRESS

III. THE EMPRESS

• *Hen of the Woods* •

Looking like a mother hen hidden beneath old oaks and maples, the hen of the woods is a plentiful food source. It's fitting, then, that this mushroom is connected to The Empress card, which represents motherly nurturing, abundance, and protection. Creative and resourceful, hens will adapt to their environs by growing around sticks, rocks, and even other mushrooms into large, edible armfuls of food that can weigh up to 30 pounds or more. This mushroom is regarded as both an ancient medicine and delicious meal.

Upright

Motherhood · Resources · Nurturing · Abundance

Surround yourself with things that nurture and support you on all levels: body, mind, and spirit. You are cultivating your goals into a strong, authentic reality. When you have attended to your own goals, you can find fulfillment in helping others with theirs.

Reversed

Overprotective · Infertility · Creative Block

Your goal may be suffering because you're "overmothering" something or someone. We often have good intentions, but we can get overinvolved in the lives of others and risk smothering or violating boundaries. Pull your energy back and meditate on why you are micromanaging. Let this self-reflection guide you like a mother's advice.

IV



FLY AGARIC

Amanita muscaria

THE EMPEROR

IV. THE EMPEROR

• *Fly Agaric* •

The fly agaric is an iconic mushroom, usually the very image we conjure up when we think of a mushroom. They grow large and strong, and aren't afraid to flaunt their bright oranges, yellows, and reds (colors that broadcast their toxic effects to any creature who dares eat it). Like The Emperor card, the fly agaric has earned respect and can teach you a lot about control and leadership.

Upright

Stability • Discipline • Dependability • Leadership

You are being guided by the king of mushrooms. The fly agaric has the strength and stability to tower over smaller fungi. It has shaped fables both ancient and modern with its grand beauty and psychedelic properties. Embrace your leadership opportunity with a fair hand and a calm and expanded mind, and follow through with your responsibilities.

Reversed

Lack of Control • Stubbornness • Tyranny • Rigidity

You've rushed into a situation before you were ready, and now you're feeling overwhelmed, disoriented, and out of your league. This blow to your ego could cause you to try to regain control in an underhanded way. Instead, accept that control is no longer yours, and practice humility and benevolence through this storm.

V



TURKEY TAIL
Trametes versicolor
THE HIEROPHANT

V. THE HIEROPHANT

• *Turkey Tail* •

Turkey tail is a common and traditionally medicinal mushroom. Records indicate this incredible mushroom was used to treat illness as far back as the Han Dynasty in 200 B.C. It grows on decaying deciduous logs in clusters of uniform-looking crowns with velvet browns, golds, coppers, and sometimes blues. The Hierophant card represents traditional values, and the turkey tail mushroom can offer traditional health benefits like immune support.

Upright

Unity • Education • Conformity • Tradition

Learn from and respect traditions to help you craft and achieve your goals. Heed the practical wisdom you can get from education. Explore your religious or spiritual genealogy and integrate that knowledge into your plans. Knowledge is power, but use it responsibly!

Reversed

Challenge the Status Quo • Criticism • Personal Beliefs

You have your own ideas about ritual and religion. Be your own teacher. Go against convention, break tradition, and craft your own beliefs. Do you feel comfortable blazing your own trail? You may hear criticism—try to learn from it, but continue bushwhacking with your sharpest blade.

VI



CAESAR'S MUSHROOM
Amanita caesarea

THE LOVERS

VI. THE LOVERS

• *Caesar's Mushroom* •

Caesar's mushroom is a vibrant and edible mushroom that bursts forth from an egg sac in late summer. Just as The Lovers card represents relationships, this mushroom forms a strong ectomycorrhizal bond with oak trees, sharing beneficial nutrients with the roots in return for necessary carbon. Caesar's mushroom was a favorite ingredient used in meals for ancient Roman emperors and has reportedly been consumed for at least two thousand years.

Upright

Love • Relationships • Harmony • Soul Mates

Meaningful alliances and harmonious unions abound with the appearance of this card. If you have a long-term goal or are in a relationship, expect things to be in balance and functioning smoothly. Stay true to yourself, and harmony and reciprocity in relationships will follow.

Reversed

Self-Love • Disharmony • Imbalance • Baggage

You may need to practice turning your love inward. A reversed Lovers card asks you to prioritize self-care over any external relationships at this time. You may also recognize past emotional baggage as the source of your imbalance. This issue may be affecting you greatly, so it's worth it to explore the topic.

VII



CONIFERONE CAP

Baeospora myosura

THE CHARIOT

VII. THE CHARIOT

• *Conifercone Cap* •

The conifercone cap lives on dropped pine cones that tumble unrestrained across the forest floor—reminiscent of the movement and determination represented by The Chariot card. The conifercone cap is resolute and determined, all right—it survives by hanging on to an unsteady and unusual food source.

Upright

Forward Movement • Progress • Determination

This card is an empowering sign to take immediate action on decisions relating to your goal. Keep your focus through the ups and downs of the decision you make. You will succeed via your determination, willpower, and sturdy grip on your goals. This card could also indicate a good time for travel.

Reversed

Lack of Direction • Obstacles • Delay

Obstacles and challenges are clouding your path, and your wheels are stuck in the mud! If you've come upon an obstacle, reevaluate the decisions that have brought you here. Focus on what is in your control instead of things you cannot change. Check to see if your goals are still in line with your inner self.

VIII



CHAGA

Inonotus obliquus

STRENGTH

VIII. STRENGTH

• *Chaga* •

Growing slowly and steadily on soft birchwood, chaga is a medicinal fungus whose rock-hard skin is capable of busting blades in even the sturdiest of grinders. Chaga is tough to harvest, often requiring the use of a strong hack-saw to remove it from birch alcoves. When harvested, it can then be transformed into an antioxidant-rich tea and tincture. Chaga shows us that patience and mindfulness are key to sustainable strength.

Upright

Patience • Endurance • Good Health

This card emphasizes that you are strong-willed with a healthy stockpile of endurance. This admirable combination of abilities produces positive results. It also equips you to offer comfort and support to those needing strength in their lives. Learning how to harness and balance these powerful abilities will help you roar past any obstacles in your way.

Reversed

Inner Strength • Low Energy • Conform • Raw Emotion

Your animal side is dominant right now; your inner lion is active! Work with that raw emotion, but bring it into balance so that you do not overexert yourself and burn out. Lasting strength requires endurance. Cool off a bit and go with the flow for now. Find strength and solutions in the support of a group.

IX



ARTIST'S CONK
Ganoderma applanatum

THE HERMIT

IX. THE HERMIT

• *Artist's Conk* •

A natural canvas for the mycological artist, the pale underside of the artist's conk can be used like scratch-board art to create sepia-toned illustrations. Smoke from this bracket fungus has been used as an insect repellent, and tea from its fruiting bodies has been made into cancer-fighting medicine. This hermit-like, humble, dull-brown mushroom is often found in quiet nooks and mossy crannies.

Upright

Inner Work • Introspection • Analysis • Self-Discovery

The Hermit card reminds you that you can be alone without being lonely. Check in with yourself; are you doing okay? Are you looking to shift your life into a new direction? The Hermit reminds you to become more familiar with your true self before moving forward. The most potent spiritual lessons come when things are quiet.

Reversed

Forced Solitude • Separation • Loneliness • Withdrawal

You are taking too much personal time. Staying connected is important so that you don't isolate yourself from those you love. Remember that family and friends can help you on your spiritual journey. Open the doors to let social energy in.

X



COMMON PUFFBALL

Lycoperdon perlatum

WHEEL OF FORTUNE

X. WHEEL OF FORTUNE

• *Common Puffball* •

The common puffball literally throws fate to the wind by releasing an incredible number of spores into the air with the hope that some will find a fertile growing environment. This tarot card illustrates a completed cycle, as does the act of mushrooms sporing. Your goal was met. Now it's time for the cycle to begin anew, and you and your goals can continue to grow.

Upright

Luck · Destiny · Adapt · Surrender


The wheel of destiny is ever turning; if you're in a bad spot now, wait patiently because good times are coming. Likewise, things may be great now, but be prepared to adapt when the energy suddenly shifts in the other direction. Treat others well, and those vibes will come back your way. Let the universe help you make decisions by listening to your intuition.

Reversed

Resistant to Change · Change in Luck

You may be resistant to change, but that mindset is holding you back. You may see a negative turn in your luck. Combat this by recognizing what you *can* do about the situation and change your own luck. Alternatively: Celebrate, you may be breaking a negative cycle!

XI



OLD MAN OF THE WOODS
Strobilomyces floccopus

JUSTICE

XI. JUSTICE

• *Old Man of the Woods* •

Black, white, and gray scales allow this mushroom to camouflage itself into the forest floor. When cut, however, the old man's flesh flushes a bright red, the color of passion and emotion. The Justice card deals in black and white as well, but its gray tones represent the balance between the opposing forces—the same balance that allows the old man mushroom to humbly thrive.

Upright

Balance • Cause and Effect • Fairness • Truth

Make sure your actions are in line with your values. If you are cutting corners or being sneaky, those actions will come to light. If you have done something regretful, you'll be judged fairly as long as you take responsibility for your decisions. Be ready to experience life's truths: those that are clear, as well as murky. Stay fair.

Reversed

*Unfairness • Lack of Accountability •
Dishonesty • Prejudice*

We all make mistakes. If you find that you've made one, don't be too hard on yourself. You may feel some guilt as a result, but take accountability and be honest with yourself so you can learn and move forward to make better choices.

XII



VELVET SHANK

Flammulina velutipes

THE HANGED MAN

XII. THE HANGED MAN

• *Velvet Shank* •

Like the tarot card it's associated with, this mushroom can be found hanging—usually from chilly branches in winter when most other mushrooms are dormant. The sticky-topped velvet shank mushroom thrives thanks to its natural antifreeze chemicals. No matter what angle velvet shanks grow at, their caps quickly reorientate themselves to grow perpendicular to the ground for optimum spore dispersal. This phenomenon is known as *gravitropism*.

Upright

A New Perspective • Pause • Surrender

The pause of a literal or figurative winter has likewise halted the environment around you. Use this time to collect your bearings. Surrender to your given position or situation; you may find the break allows you to see things in a different, and maybe even more helpful, way.

Reversed

Clinging to the Past • Resistance • Delays

Like debris clinging to a sticky mushroom cap, the reversed Hanged Man suggests you are holding on to the past or fighting against letting go of something that no longer serves you. This resistance can cause unnecessary delays in reaching your goal.

XIII



DESTROYING ANGEL
Amanita bisporigera

DEATH

XIII. DEATH

• *Destroying Angel* •

A beautiful yet very toxic mushroom that emerges from a protective, egg-like sac, the destroying angel is a beacon-white summer sight. This mushroom transforms from a stubby, armored button into an elegant, bone-pale creature, holding its own on the ruthless forest floor. Let this card remind you that death isn't to be feared, but respected as a transition and a necessary part of life.

Upright

Transformation • New Beginnings •

Transition • Letting Go

The Death card has come to remind you to accept your current transition. New beginnings come at the end of a cycle, and renewal is headed your way. While the transformation may be uncomfortable, you may find yourself able to fly much more freely when you emerge from this cocoon.

Reversed

Resistance to Change • Lack of Progress • Immobility

Don't postpone what needs to come to pass any longer. You are on the verge of a major shift, but may be resisting it. Accept change in all its forms to avoid getting stuck in stagnation. You may be going through a massive personal transformation hidden from those around you; experience it, own it, and, if you're comfortable, share your story when you've succeeded. It will be an inspiration to someone.

XIV



SHIITAKE

Lentinula edodes

TEMPERANCE

XIV. TEMPERANCE

• *Shiitake* •

So named for growing on *shii* tree logs for cultivation, the shiitake is an ancient medicinal and culinary mushroom. It is a prolific decomposer of wood and even an inhibitor of leukemic cells. The health benefits of the shiitake show the practical versatility of this balanced mushroom, while it can also be used to create delicious dishes. Creation and destruction: Both are balanced (like Temperance) inside this humble, little brown mushroom.

Upright

Patience • Balance • Refinement

Balance your life by doing away with harmful habits. Calm your mind and look for inner harmony in a chaotic world. Blend different aspects of your life to create a balanced and transcendent solution, much like an artist blending watercolors or a chef combining spices.

Reversed

*Realignment • Baggage • Excess •
Self-Healing • Moderation*

You are out of balance—perhaps you are overworking yourself, or maybe overcelebrating? Moderate your energy and attention to realign yourself for success in your endeavors. Ask for advice and weigh all opinions to make the best decision.

XV



LOBSTER MUSHROOM
Hypomyces lactifluorum

THE DEVIL

XV. THE DEVIL

• *Lobster Mushroom* •

The lobster mushroom is the result of a parasitic fungus that takes over the fruiting bodies of certain nearby mushrooms. This devilish act changes the shape and taste of ordinary, bland white mushrooms into textured, orange delicacies. Likewise, The Devil card warns us that looks can be deceiving and not everything is as it seems.

Upright

*Restriction • Control • Addiction •
Temptation • Entrapment*

The current bondage you feel in your life may seem strong, but it is an illusion. If you choose to, you *can* free yourself from external influences. This card emphasizes the possibility of ridding yourself of negative forces, both internally and externally.

Reversed

*Invasive Thoughts • Release • Guilt and Fear •
Overcoming Addiction*

Perhaps you are in denial of the toxicity prevalent in your life. This card, when reversed, urges you to release yourself from feelings of guilt and fear. It may seem impossible, but the power to do this lives inside of you. Recognize any relentless invasive thoughts as just that: *invasive* and not a reflection of your true self.

XVI



YELLOW NETTED STINKHORN
Phallus multicolor

THE TOWER

XVI. THE TOWER

• *Yellow Netted Stinkhorn* •

This stinkhorn mushroom is quite a sight. Even more, quite a *smell*. This phallic tower-shaped mushroom releases a foul goo full of spores that attract flies who disperse them as they fly away. The stinkhorn explodes from the ground with a force that can crack pavement, then decays into a horrific puddle—capturing the essence of The Tower card.

Upright

Collapse • Upheaval • Explosive Beginnings • Release

A monumental change is approaching. With it comes new beginnings, but get as stable as you can—it's going to be a bumpy ride. This change, while dramatic, is necessary for essential renewal. Keep your wits about you and your eyes on the horizon.

Reversed

Fear of Pursuit • Confusion • Stormy Weather

A reversed Tower card represents internal upheaval you are feeling now. Perhaps you are yearning for a major life change but are afraid to pursue this potentially confusing path. This card encourages you to stay focused on the light at the end of the tunnel.

XVII



GOLDEN REISHI
Ganoderma curtisii

THE STAR

XVII. THE STAR

• *Golden Reishi* •

This colorful medicinal mushroom is heralded for its adaptogenic benefits. As an immune system modulator, it helps your body adapt to environmental stressors. As such, in Chinese medicine this species is known as the mushroom of immortality or *Ling-zhi* ("divine mushroom"). Nothing is out of reach; you just have to adapt to your surroundings and act accordingly. Shine brightly, keep a level head, and let this golden star help you sparkle inside and out.

Upright

Creativity • Self-Confidence • Clarity •

Liberation • Recovery

You are a brilliant being. You are enjoying spiritual renewal and recovery, and you are now free to make something just as beautiful as you are. Feel the harmony and altruistic support the universe has highlighted for you in this card.

Reversed

Repression • Miscommunication •

Lack of Empathy • Worries

A reversed Star card suggests you may be bound too tightly or closing yourself off from external activity. Reflect on if you are truly following the right path and be prepared for things to go a little sideways.

XVIII



EASTERN JACK O' LANTERN
Omphalotus illudens

THE MOON

XVIII. THE MOON

• *Eastern Jack O'Lantern* •

From a distance, a gathering of these mushrooms looks like a cornucopia of chanterelles or delicious chicken of the woods mushrooms. However, look again. Jack o'lanterns are toxic but beautiful in their mystery and danger. Known to glow an eerie green at night, their Latin epithet *illudens* means "deceiver." Like The Moon card, this mushroom invites you to double-check your decisions and reassess choices.

Upright

Indecision • Illusion • The Unconscious • Deception

This card is a dreamy one; things are veiled in moonlit fog, shapes are shifting, and distant echoes are warped. You're a little nervous in this murky underbrush, but remember, not all that is shadowed is malevolent. Weather this situation with perception, awareness, and cleverness.

Reversed

Inner Confusion • Repressed Emotion • Enlightenment

Let your intuition guide you at this time. Your mind can lead you down dark pathways. When reversed, The Moon shines a light, illuminating those shadowy trails so you can traverse the terrain more easily. Sinister thoughts aren't as scary when highlighted with a radiant spotlight.

XIX



GOLDEN OYSTER MUSHROOM
Pleurotus citrinopileatus

THE SUN

XIX. THE SUN

• *Golden Oyster Mushroom* •

A beautiful warm-weather mushroom that smells of watermelons and tastes like cashews, golden oyster mushrooms are like sunshine growing from decaying hardwood. Similarly, The Sun card outshines and offsets any other negative cards in your divination spread. Radiate your true, beautiful solar self with enthusiastic positivity, and positivity will shine brilliantly back to you.

Upright

Success • Joy • Truth • Happiness • Light

If you feel like you are stuck in shadows, The Sun card is here to provide light and restored happiness. Be true to yourself, experience this impartial elemental joy with youthful vigor, and just play. If there is an opportunity ahead of you, grab it with gusto!

Reversed

Overexcitement • Lofty Expectations • Delays • Ego

Try to keep your excitement and expectations in check. Dodge tendencies toward egotism and/or perceptions of yourself that can cause unnecessary stress. Remember, the brighter the sun, the harsher the shadows. Keep your sunny days as shadow-free as possible.

XX



CORPSE FINDER
Hebeloma syrjense
JUDGMENT

XX. JUDGMENT

• *Corpse Finder* •

Reported to have brought a crime to light when a gathering of these mushrooms fruited over buried human remains, the corpse finder gets its rather gruesome name because the release of nitrogen from a decaying mammal is what causes it to appear. The Judgment card need not refer to a sordid court case, however; it can call to mind judgments made by or about you, or upcoming choices.

Upright

Decisiveness • Resurrection •

Second Chances • Introspection

A revelation is on its way. Act on an exciting opportunity or embrace a new mindset—do not slide back into your shell if you can help it. Trust your judgment, wait, and be patient. The fruits of your labors will appear when the time is right.

Reversed

Regret • Delays • Self-Doubt • Ignoring Advice

An outcome may be out of your control or very hard to see—either way, it is not available to you at this time. Try to make this situation work as best as you can by recognizing and acting on the elements you *can* control. Heed the call when it sounds for you.

XXI



HONEY MUSHROOM
Armillaria ostoyae
THE WORLD

XXI. THE WORLD

• *Honey Mushroom* •

The world-record holder for largest and possibly oldest living organism is the honey mushroom, which lives in Oregon's Blue Mountains. At its youngest estimation, the 2,400-year-old mushroom covers nearly 4 square miles, and its massive underground network of mycelium encompasses several mountaintops. Honey mushroom fruiting bodies peek out from the bark of dying trees as a reminder of its achievement—which is The World card's message as well.

Upright

Success • Celebration • Expansion

The final card in the Major Arcana represents the completion of your goals. Like honey mushrooms, your journey has taken time and space and represents an interconnected collection of your choices and decisions. You did it—now enjoy the delicious fruits of your labor. Don't forget to recognize your achievements and thank people who helped you complete your goal.

Reversed

*Disharmony • Unfulfilled Achievement •
Stagnation • Disappointment*

You are so close to reaching your goal, but an obstacle lies in your path. Pause with purpose. Meditate through this break, and work your way around this impediment. Perhaps you need to reconnect with your inner self and moral boundaries in order to identify and overcome the hurdle.

Minor Arcana

The Minor Arcana (sometimes called the Lesser Arcana) fills in the details and minutiae within a reading. These details can relate to both daily life and your overall spiritual journey. The energy of the Minor Arcana is a temporary one. It supplements the bigger picture divination messages you received from the Major Arcana in order to help you figure out how to best implement that advice. These cards show you how to act in the present and what practical steps you should consider to meet your goal.

Try to keep a positive outlook even if you receive a seemingly negative card. Think of it as just another piece of information; meet it and greet it with resolute confidence. To explore the tarot's prophetic abilities to their fullest potential, suss out important details to the reading by using additional or *clarification* cards to help investigate the messages that need more explanation. Note that an upright card may refer to external stimuli, while a reversed card often reflects inward.

The Minor Arcana has four suits—Wands, Cups, Swords, and Pentacles. Each suit contains four “court cards”—the Page, Knight, Queen, and King—an Ace, and numbers Two through Ten. The court cards are potential interpretations of specific people and their personality traits. Court cards may also portray the personality of a situation or the mental maturity of a person. Before a reading, you can consider how you want to interpret

the court cards, but always trust your intuition with how they choose to appear. The court cards in this tarot deck celebrate their playing card counterpart suits as part of their border design: Wands refers to the clubs suit, Cups to hearts, Swords to spades, and Pentacles to diamonds.

The four traditional suits of the Minor Arcana are related to the four earthly elements—Wands refers to fire, Cups to water, Swords to air, and Pentacles to earth. Pay attention to which element the cards present to you most abundantly. This is another layer to interpreting your reading. For example, if you have a spread of mostly Wands (fire element), it could mean that your passion is overflowing and your entrepreneurial spirit is blazing. However, having Wands as the primary suit could also represent a fiery temper and indicate hasty actions that may burn bridges.

Wands: The Fire Element

The Wands suit (fire element) represents raw emotions, passions, and new ideas. These cards illustrate your motivation (or lack thereof) in your journey. Be cautious of acquiring an inflated ego or manifesting destructive or overzealous actions. If you are starting a project or have a goal in mind, Wands is the suit to help inspire and guide you to construct a solution.

In this deck, the Wands suit is illustrated with mushrooms and fungi influenced by heat or directly affected by fire, as well as the colors or luminescence synonymous with burning embers, such as reds and oranges. Fire, while it is destructive, also imbues soil with renewed nutrients, allowing specialized organisms to thrive and start the process of reincarnating the forest. Trees of all kinds, as well as the sticks and leaves that fall from them, build a sturdy frame around the Wands suit illustrated in this set.

Watching over the Wand's court cards in this deck is the salamander, a classic symbol of fire. With their bright colors and curving, agile bodies, salamanders slide across the damp forest floors with the ease of a lick of fire. Folklore says they are impervious to flames, and possibly even made of flame themselves.

People who relate to the Wands suit are energetic, charismatic, and warm, with ties to Aries, Leo, and Sagittarius astrological signs. Alternatively, be ready to cooperate with hot tempers and the impulsiveness of a Wand spirit. Like lions, and like Ares (the god of war), this suit is home to some spicy characters.

Cups: The Water Element

The Cups suit (water element) reflects a reading steeped in imagination, creativity, and emotion. Cups offers you advice, but it can come in the form of a refreshing mist or a towering tsunami. Similarly, emotions in this suit can run shallow or as deep as a seemingly bottomless ocean. A mainly Cup-featured spread illustrates a reading swimming in emotional struggles and matters of love, and asks you to tap in to your inner wisdom to intuitively feel your way to a solution.

In this deck, Cups mushrooms rely on or celebrate water as an essential element for their prosperity. Their azure hues and influences denote a sense of cooling tranquility, as they thrive from rainfall or even quietly perish by turning to liquid themselves. The water-inspired illustrations in this deck appear as shells, viscous protection via slimy caps, or a foreboding slime trail of destructive snails.

People who relate to this creatively expressive suit are often artists, singers, designers, and poets. Those with a propensity to be romantic, spiritual, and sensitive are generally considered Cups characters. One whose cup turbulently overflows needs to be wary of becoming too needy, wildly emotional, or pessimistic. Your heart is in control with Cups; leave the thinking for the Swords suit. The astrological signs in line with this suit are Pisces, Cancer, and Scorpio.

Swords: The Air Element

The Swords suit (air element) is all about intellect and leading with your head. It teaches you about communication and mindset, and provides decision-making advice. Be mindful of your words and actions, and keep tabs on your thoughts as well. Just as the wind can scatter spores with reckless abandon, so, too, can the Swords suit scatter your thoughts. Clear communication is a necessary skill, whether you are presented with situations like gentle breezes or turbulent winds.

In this deck, the Swords suit collects mushrooms that require, or are related to, the element of air to ensure their survival. Spores require a breeze to disperse and settle into new successful colonies. Some of these fungi produce smells that linger on the wind, attracting insects to their procreative secretions, which are full of spores.

You'll also see bird symbolism throughout this suit's steely palette, which pays homage to the metallic hues of a sword. The dragonfly is a traditional symbol for the Swords suit because it cuts through the wind and slices through environmental boundaries as an aquatic and aerial insect.

Those who can relate to the Swords suit are usually great thinkers, academics, and innovative spirits. Gemini, Libra, and Aquarius astrological signs often identify with this suit. They are fantastic orators, as they access the element of air with their breath, fueling thoughtful speeches. On the other hand, Swords spirits will not mince words or waste time. This may come off as snobby, impatient, or mean, but be aware these actions come from a mental standpoint focused on being as efficiently productive as possible.

Pentacles: The Earth Element

The Pentacles suit (earth element) in this deck is fertile with many hidden, buried, or financially revered mushrooms, like the prized truffle, a well-known culinary treasure. As the suit that represents the financial and material world, the advice offered in these cards is rooted in reality and tangible objects. This suit can also represent the ego, self-worth, and self-esteem. Pentacles cards in a spread relate to work, finances, and material concerns.

In this deck, gemstones and crystals (with their own metaphysical spices) are peppered throughout this suit, while hues of greens, golds, and warm sepias provide a tangible and terrestrial energy.

Pentacles cards represent people who don't mind getting their hands dirty. Farmers, mechanics, and tradespeople often identify with this suit. Those who are strong-willed and dependable will find their spirit in tune with this suit, as will those with astrological connections to Taurus, Virgo, and Capricorn. Workaholics and greedy or miserly characters embody the negative side of the Pentacles and warn us to maintain a healthy materialistic balance in our lives.

ACE OF WANDS

• *Burn Morel* •



This card overrules any negative Minor Arcana card nearby and signals incoming good news or the start of a creative endeavor. Burn morels rise from forest fire—scorched earth to fruit into creatively shaped harbingers of an upcoming mushroom feast.

Upright

Good News • Creation • Burning Inspiration

Burn morels represent the start of something phenomenal blossoming just below the surface. Use this passion burning within to create something amazing and fulfilling.

Reversed

Distraction • Clouded Direction • Delays

Your new creative endeavor has passion but no clear direction. This may cause delays due to distractions. Clear the mental haze by meditation or reading additional cards.

TWO OF WANDS

• *Bleeding Tooth Fungus* •



This dramatic mushroom releases a blood-red substance and forms symbiotic partnerships with the conifers it fruits beneath. Studies show that this mushroom contains the anticoagulant atromentin as well as thelephoric acid, a potential treatment for Alzheimer's disease.

Upright

Planning • Partnerships • Potential

Partnerships and creativity bloom to generate the potential for something wonderful. Plan how you will see your goal through by constructing a concrete map that you can clearly and confidently follow.

Reversed

Irresponsible Partners • Delay • Rebalance

Unreliable partnerships can extinguish progress. Rebalance your foundations, release what is delaying your goal, and don't let pride dissuade you from making early amendments to your path.

THREE OF WANDS

• *Cedar-Apple Rust* •



This is the card of travel, and, similarly, the cedar-apple rust is the fungus of travel in its universe. Yellow-orange powdery spores are transferred between apple and cedar host trees by attracted insects or a steady breeze.

Upright

Bonding · Loyalty · Expansion

The parts of a plan are moving, changing, and expanding with red-hot gusto. A stable leader—like a sure breeze, pollinating insects driven by instinctual bonds, or *you*—is needed to oversee this task.

Reversed

Underachieving · Frustration · Patience

Heed the card's upright definition; however, know that delay and frustration will accompany it. Underperforming or procrastinating at this moment can erase potential game-changing opportunities.

FOUR OF WANDS

• *Birch Polypore* •



Stability is the theme of this card. The birch polypore is a well-regarded form of ancient medicine that was found in the knapsack of a 5,000-year-old Alpine mummy in 1991—that shows some time-honored stability!

Upright

Stability • Harmony • Celebrate

Successful planning and leadership allow you to enjoy stabilized harmony in your work environment or community. Your plan's embers are creating a sustaining bonfire worth celebrating.

Reversed

Glitches • Instability • Stagnation

Glitches and conflicts may be hindering a burgeoning harmony in an otherwise fertile work environment. Being too patient at this point may lead to stagnation or instability.

FIVE OF WANDS

• *Orange Pinwheel* •



Tests and criticism may try to smother your blaze, but like the sturdy stalk of the minuscule orange pinwheel mushroom, you must stand strong and with purpose. This card may also indicate a beneficial competition that will add kindling to the creative fire.

Upright

External Conflict • Criticism • Tension

External conflicts test your character and momentum. Stay strong and loyal to the path you're on with determined focus. Criticism and tension often come with the ignition of important endeavors.

Reversed

Internal Conflicts • Short Fuses • Reconnect

Upsets are causing the temperature to rise like a raucous bonfire, but listening with compassion will cool things down. Revive fading coals into cozy campfires with those you trust.

SIX OF WANDS

• *Red Chanterelle* •



A departure from what you're familiar with can be scary, but can also deliver great rewards. Celebrate new experiences like this rarer, spicier cousin of the common golden chanterelle. Golden and red chanterelles mingle in fiery colors on the forest floor in a blaze of harmony.

Upright

Celebration • Progress • Peer Appreciation

Celebrate the success you've attained so far! Recognize your achievements and thank those who have helped you. Allow kind words from your peers to burn away any weariness.

Reversed

Inner Celebration • Self-Confidence • Patience

Internalizing your milestones does not mean undermining your success. Quietly celebrate if that's what you wish—but celebrate nonetheless! Practice patience if success is germinating more slowly than you expected.

SEVEN OF WANDS

• *Eternal Light Mushroom* •



This card showcases your strength—you've completed your goal (with flair!). Constant criticism can make you feel tiny and hollow, but like the eternal light mushroom, you should glow with pride; you've come so far.

Upright

Endurance • Advocacy • Self-Confidence

Defend your position, keep glowing brightly, and speak up for those who may need advocacy. Guide others with your illuminating self-confidence and know that those who love you also support that radiance.

Reversed

Criticism • Doubt • Prioritize

Criticism about your success shouldn't cause you to doubt your goals. You can't please everyone. Banish any shadows that may have crept into your plan and assign spotlights to effective priorities. This can help mitigate any impending exhaustion.

EIGHT OF WANDS

• *Red Coral* •



Red corals grow quickly and do not redirect their wand-like spires for any obstacles. Reaching skyward, they wrap and twist around whatever tries to overshadow them. This is the red-hot energy of the Eight of Wands in full effect.

Upright

Dynamic • Action • Growth

Things are moving quickly. This shift into high gear reinforces the closeness of your goal. Check in on your limitations and boundaries to ensure this is a carefully controlled firestorm of productivity.

Reversed

Overwhelmed • Loss of Control • Chaos

You may be going too fast and feel as though you've become entangled in yourself. Don't cut corners or skip details at this stage; get things done right to avoid chaos.

NINE OF WANDS

• *Poison Fire Coral* •



As a notoriously poisonous mushroom, the poison fire coral illustrates the feelings of anxiety that come with this card. Learn from this fragile mushroom and brazenly display your strength against adversity by using tools that have protected you thus far.

Upright

Courage • Sacrifice • Persistence

Stand your ground—there is strength building through your sacrifices. Stay persistent, but don't miss any beneficial opportunities because of your stoicism. Your defenses are mighty and commendable.

Reversed

Exhaustion • Fatigue • Defensiveness

Exhaustion and fatigue are burning you out. A difficult situation can weigh heavily on your heart, but lean on your inner resources and resilience to keep your defenses blazing.

TEN OF WANDS

• *Blackening Waxcaps* •



Refreshing rainclouds are on the way: a welcomed sign, as this card signifies burnout. Blackening waxcaps turn from brilliant orange to glossy black as they age. This signifies not their demise, but the strength gained from overcoming life's burdens. Delay your reading for a short time if this card presents itself.

Upright

Burden • Overwhelmed • Hard Work

The weight of your responsibilities is heavy. Let the heat emanating from your objective fuel your determination. If you're feeling overwhelmed, know that you are so close to your achievement!

Reversed

Delegate • Inner Resources • Reach Out

Delegate responsibilities if they are dulling your brilliant shine. Don't try to prove anything by carrying it all.

PAGE OF WANDS

• *Pink Burn Cup* •



The Page of Wands represents limitless potential, reunions, and good news. The pink burn cup similarly represents renewal in precious, bright pink gatherings emanating from burnt soil. Their appearance brings with them the chance of a flush of desirable burn morels.

Upright

Creativity • Potential • Inspiration

An idea is conceptualized in your vigorously creative mindset. You are in a fertile environment full of seeds of inspiration and potential, so don't be afraid to go for it.

Reversed

Miscommunication • Obstacles • Hesitation

You are hesitant to manifest your projects. If you're running into obstacles, meditate on solutions and ask for a friend's help. Be aware that miscommunication may delay progress.

KNIGHT OF WANDS

• *The Copper Spike* •



The copper spike, so named for its resemblance to ancient metal bolts used for shipbuilding, is a sturdy mushroom, and a good representative of the action-focused Knight of Wands. It is edible, but not tasty; it gets the job done.

Upright

Mobilization • Action • Charisma

Mobilize plans for your goal as you passionately charge ahead. You are truly capable of building the best bonfire the world has ever seen. Your charisma lights up those around you.

Reversed

Recklessness • Haste • Passion Projects

Recklessness and frustration nip at your heels because of a hasty acceleration. Reevaluate your actions. Ignite your passion project or create something that lights up your soul.

QUEEN OF WANDS

• *Luminescent Panellus* •



The luminescent panelus glows with an ethereal green light while perched in high thrones of deciduous trees. Representing the Queen of Wands, this bioluminescent mushroom shares the same authority and charm as a vigilant matriarch.

Upright

Ambition • Benevolence •

Authority Through Compassion

Infuse your goal with ambition and confidence. Thoughtfully tap in to beneficial lessons from your community. Shine with genuinely strong and balanced compassion like the benevolent leader you are.

Reversed

Professional Drama • Inner Beliefs • Bitterness

This mushroom is known as the *bitter oyster*, but you must avoid that mindset. Do not give in to professional drama. Banish bossiness and greed while staying true to your inner ideals and focus on nurturing your shadow self.

KING OF WANDS

• *Wine Cap* •



A strong and sturdy leader clad in fiery colors oversees this card. In much the same way, the royal red wine cap robustly reigns over the smaller cohabitants in the garden. Its powerful abilities and culinary lore are deliciously regal.

Upright

Entrepreneur • Authority Through Power • Dynamic

Be a fair and passionate leader by letting rational ideas shine through your entrepreneurial spirit. Materialize solutions with clarity and confidence so that others feel comfortable supporting you.

Reversed

Micromanaging • Tyranny • Impulsiveness

Do not micromanage or become a tyrannical overseer. Clearly and patiently communicate to your partners what you are working toward. Impulsiveness and impossible expectations thrust onto others will ignite conflict.

ACE OF CUPS

• *Fluted Bird's Nest Fungus* •



The Ace of Cups card highlights fertility and an important emotional journey that has dramatically arrived. Similarly, fluted bird's nest fungi overflow with egg sacs that are catapulted from their nests when a drop of water ejects them with reckless abandon into the unknown.

Upright

New Beginnings • Good Vibes • Abundance

New beginnings are on the horizon bursting with positive energy. Benevolent emotions are swelling within. This moment is fertile and abundant with creative energy.

Reversed

Blocked • Distrust • Self-Love

Blocked emotions are repressing your intuition. It's okay to trust your partner to help you process these feelings. Practice self-love and discover how refreshed you feel afterward.

TWO OF CUPS

• *Indigo Milkcap* •



Indigo, a calming and peaceful hue reminiscent of the water element associated with this suit, is an unusual color for a mushroom. Finding a pair of these unique creatures is a gratifying sight after a soaking rain. This card represents a mutual flow of emotions between two spirits.

Upright

*Collaboration • Harmonious Partnerships •
Mutual Attraction*

Partnerships and creativity swell from matched souls who share similar values, allowing unconditional love to flow. This alliance creates sturdy foundations and sound solutions.

Reversed

Distrust • Miscommunication • Self-Love

Drain away feelings of distrust by practicing some much-needed self-love. This allows your future partnerships to thrive. Loving others without loving yourself will knock your inner harmony out of sync.

THREE OF CUPS

• *Stalked Scarlet Cup* •



These mushrooms bloom en masse in spring among watercress and delicious wild leeks. They are a celebration of new life awakening from patient and chilled dormancy—a perfect match for the Three of Cups. Raising their cups skyward, they twist gracefully around each other as if dancing.

Upright

Reunions • Celebrations • Indulgence

Reunions and celebrations abound: Drink it in! Embrace these good times and start more collaborations. Let in the healing that comes from socializing so you can more deeply connect with your loved ones.

Reversed

Hung Over • Social Exhaustion • Introspection

Overcelebrating may send you searching for some quiet space away from the crowd, but it's okay to party by yourself. Give attention to your mental and physical health.

FOUR OF CUPS

• *White Basket Fungus* •



Bursting forth from a protective egg sac, this fungus twists into an odorous, cage-shaped form. Maori (New Zealand) folklore associates them with Whaitiri, the thunder goddess, as they often appear after thunderstorms. Think of this card's message less like the bars of confinement, and more like load-bearing support beams in a cozy, safe space.

Upright

Meditation • Set Limits • Boredom

Spiritual contemplation and emotional limits have been set. Don't be afraid to say no if your cup is already too full. This card may also indicate boredom or stasis.

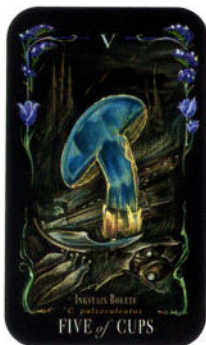
Reversed

Stubbornness • Introspection • Withdrawal

Though it seems like stubbornness to others, purposeful withdrawal allows you to recognize what grounds you through introspective assessment. Meditate on your values to rediscover what makes you happy.

FIVE OF CUPS

• *Inkstain Bolete* •



Inkstain boletes often appear solitarily and at the mercy of hungry slugs. Their naturally bright yellow flesh will flush a deep blue when injured, which is how you might feel when you see the Five of Cups. Even the deepest-hued bruises will fade, though, and when recovered, you are tougher, wiser, and more adaptable.

Upright

Loss • Pessimism • Regret

A hard time of loss, separation, or sadness has leaked into your life. Your loved ones want to support you, so let their comfort help drain away any feelings of regret. Focusing on the negative can distract you from seeing what tools you have around you during this hard time.

Reversed

Moving On • Self-Forgiveness • Recovery

Process your feelings and practice self-forgiveness to help rid yourself of the sadness you are feeling, allowing you some inner peace. Your trials have been fought, and reprieve is on its way to quench your parched spirit.

SIX OF CUPS

• *Pixie's Parasol* •



The Six of Cups invites you to reminisce on humbler times or experiences with loved ones in order to refresh ideas or emotions that feel stale. Let the calm blue (and even the cute common name) of the pixie's parasol bring your inner child back. You have permission to play!

Upright

Nostalgia • Harmony • Start Anew

Recall happy, playful memories or reunions that are important to you. Reconnect with positive characters or stories from your past and let the warm feelings of nostalgia inspire your present journey.

Reversed

Reminiscing • Peace with the Past • Inner Dwelling

You cannot live in the past, so reconnect to your inner child without allowing immaturity to arise. Be careful of the silt that stirring these memories brings up; don't let it cloud your view of the present.

SEVEN OF CUPS

• *Black Trumpet* •



Black trumpets are chalice-shaped and are desired underbrush snacks, but they are also masterful mycological chameleons—making them a good representation for the Seven of Cups, which represents choices and confusion.

Upright

Opportunities • Illusions • Wishful Thinking

You are inundated with many promising choices. Recognize what may be illusion and what is truly attainable. Carefully study shadows for hidden treasures sheltered within the shade.

Reversed

Confusion • Overwhelmed by Choices • Deception

Confusion from a cornucopia of illusions or daydreams is overtaking your mind with mental smog. Take some time to determine which options are best for the long term.

EIGHT OF CUPS

• *Shaggy Ink Cap* •



This card announces that a departure or perceived destruction is a necessary part of your journey. Emotionally prepare yourself for things to get a little sticky... sort of like how the shaggy ink cap deliquesces (liquifies itself after secreting a black spore-filled liquid) in order for the species to continue on.

Upright

Departure • Natural Ending • Travel

A necessary departure needs to occur. Venturing into the unknown can be scary but fulfilling in the long run. Make your move confidently, and bravely accept your journey's unavoidable challenges with valiant grace.

Reversed

Dissatisfaction • Self-Analysis • Clinginess

Use your intuition to decide whether this current situation can be fixed or needs to be released. If you see only thorny tendrils, it's time to step away or set firm limits.

NINE OF CUPS

• *Water Club Mushroom* •



Happy to be partially submerged in slow-moving water, water clubs exist away from dangers facing most other fungi. Adaptation has rewarded them with transitional protection but not total immunity. It's reminiscent of the Nine of Cups, a card of happiness and success.

Upright

Contentment • Satisfaction • Wish Fulfillment

Appreciate this card as a sign that wishes are coming true. But celebrate with confidence, not pride. Don't settle, but let your success inspire you to go even further.

Reversed

Indulgence • Inner Happiness • Something's Missing

Celebrate fulfilling moments, but do so looking inward. Take a moment to congratulate yourself for the warrior-like emotional fortitude you've developed. Be mindful of any important achievements, large or small, in need of similar appreciation.

TEN OF CUPS

• *Portobello* •



Portobellos are popular mushrooms for eating, thanks to their hearty flavor and ample size. The brown and white button (cremini) juvenile forms of portobellos are also popular in the kitchen, reflecting this card's theme of familial bonds.

Upright

Comfort • Stable Familial Bonds • New Home

Divine emotional fulfillment is yours. Strong, stable bonds and a sound home base are like a safe harbor on a stormy coastline. Stressful feelings and frustrations are abating; it's going to be okay.

Reversed

*Misaligned Values • Relationship Struggles •
Disharmony*

Moral or financial upsets are disrupting your family life. Tension may seep in and break apart what you thought was a firm foundation. Regroup as a family to prevail.

PAGE OF CUPS

• *Blue Pinkgill* •



A delightful new idea or opportunity has come to you out of the blue. Think outside the box to imbue this moment with memorable originality. The color blue in blue pinkgill is rare in the realm of fungi—try to give the world something unique and wonderful to appreciate as well.

Upright

Youthful Energy • Inner Strength • Curiosity

Develop skills with boundless, childlike energy and explore your ambitions. Allow creativity and curiosity to drive you. What an exciting time this is—let inspirational inclinations flow through you!

Reversed

*Missed Chances • Emotional Immaturity •
Overindulgence*

Don't hold back from acting on a good idea because you're afraid. Instead of letting these fears bully you, break through them with a streamlined plan to prevail.

KNIGHT OF CUPS

• *Purple Laccaria* •



Creativity and calm are moods manifested by the beautiful purple laccaria and the Knight of Cups. While some of its look-alikes can contain arsenic, this mushroom provides safe sustenance to humans, and a network of threads (mycelium) that nourishes surrounding tree roots.

Upright

Compassion • Altruism • Charm

This card represents someone's tempered charm. Proceed with grace and maintain a cool and collected mind. Allow calm wisdom to guide your emotions while taking on this task.

Reversed

Unclear Direction • Moodiness • Passive Aggression

Murky water is clouding your passage. Your idea seemed clear before but now may seem uncertain. Don't let your emotions overrule your actions; avoid making assumptions or jumping to hurtful conclusions.

QUEEN OF CUPS

• *Nargan's Bonnet* •



With a cap that looks like a night sky over a calm sea, the dark blue hues of this mushroom require you to trust your intuition to discover what you cannot see with your eyes. It is named after Nargun's cave, a sacred place for women's ceremonies in Australia's Gunaikurnai tribe's history—the Queen of Cups would appreciate this revered place.

Upright

Emotional Intelligence • Intuition • Creativity

Connect with your inner benevolent matriarch and guide your crew with a calm and compassionate hand. Follow your intuition and let the love that flows forth from you sustain transcendent creativity and encourage it to thrive.

Reversed

Codependency • Emotional Baggage • Self-Care

Bottled emotions and oversharing your energy can foster codependent relationships. Listen to your intuition. Are you tangled in the tendrils of others' emotional baggage? If so, rebalance your inner self.

KING OF CUPS

• *Verdigris Agaric* •



This card signifies a stable intersection of emotions and impulses. Like its cousin, the bold fly agaric (seen on The Emperor card), the verdigris agaric reigns over the forest floor but with a more subdued aura. Its color and vibe are cooler, but no less commendable.

Upright

Diplomatic • Balanced • Fatherly

This card inspires warm and civil diplomacy with an even-tempered, patriarchal hand. Follow your intuition to expertly outmaneuver obstacles and bolster those around you through steady encouragement.

Reversed

Manipulation • Overwhelmed • Self-Compassion

Emotional manipulation can bog down even the most patient of kings. Collect yourself before a blowout occurs. You're in command of a journey to align your inner and external selves in a royally harmonious way.

ACE OF SWORDS

• *The Parasol* •



This Ace card indicates that you can overcome any obstacles in your way. The parasol mushroom soars above other fungi in terms of stature as well as edibility. Open your mind and release your ideas like spores from this commendable vantage point.

Upright

Beginnings • Decisions • Assertiveness

A new journey that will require cleverness and mental aptitude lies before you. The path may be a bit bumpy, but the Ace card encourages you to gather fortitude.

Reversed

Mental Block • Reexamine • Influence

Outside forces can cause a delay or put a stormy halt to a project. Reexamine pathways that will solve this issue early to ensure the success of your endeavor.

TWO OF SWORDS

• *Piggyback Rosegill* •



The piggyback rosegill is a rare, white, parasitic mushroom that flourishes primarily on the caps of decaying clouded funnel mushrooms. It's a good fit with this card, which indicates an intersection of ideas that can create a polarizing situation or battle of willpower.

Upright

Stalemate • Recognition • Efficiency

Trust your intuition to guide you through this stalemate. Use this opportunity to thoughtfully recognize the beneficial options available to you. Answers aren't often clear-cut, so try to be clever in your approach.

Reversed

Information Overwhelm • Confusion • Deception

So many choices...which path should you take? Calmly think through the dilemmas hurtling your way. Confusion and deception whirl about like projectiles in a tornado; ground yourself with a strong mental tether.

THREE OF SWORDS

• *False Morel* •



Brain-like, twisted versions of the sought-after edible morels, false morels are cripplingly poisonous—similar to the Three of Swords' unfortunate message. Their dense, meaty stalks crouch among conifers, as opposed to the light, hollow stalks of the edible variety, which prefer a deciduous habitat.

Upright

Heartbreak · Betrayal · Medical Attention

This is a difficult card to receive, but heartbreak and betrayal pierce the vulnerable parts of everyone's life. Hurtful words used against genuinely good individuals are rarely legitimate. Thoughtfully address any medical issues, physical or mental, at this time.

Reversed

Forgiveness · Mental Healing · Optimism

After a storm, rebuild your mental sanctuary with a foundation of strong self-forgiveness. Take care of your mind as you would an injured limb and invite vibes of fresh optimism.

FOUR OF SWORDS

• *Snow Fungus* •



The snow fungus is a beautiful translucent mushroom that can grow quite large but is deceptively fragile. The energy used to create a monument must be strong and steady to ensure a structure with the same qualities. Rest efficiently.

Upright

Rest • Meditation • Recuperation

You're exhausted as a result of finishing an initial goal; now rest, meditate, and mentally recuperate your worn-out body and mind. A long and blustery path winds ahead of you; take today off from tough decisions.

Reversed

Burnout • Stagnation • Translucence

Address burnout now to avoid inevitable exhaustion or permanent stagnation. Don't fade away—instead, take a resolute step back, look inward, and administer self-care to any necessary areas.

FIVE OF SWORDS

• *Orange Birch Bolete* •



Battles fought valiantly can still end in failure. The orange birch bolete is at the mercy of foragers and snails alike. Though its damaged flesh may turn black, accentuating sustained injuries, it continues to endure defiantly and glow with beautiful autumnal colors.

Upright

No-Win Situation • Conflict • Perspective

Avoid being caught in a no-win situation. Not all battles need to be fought. Try to see the situation from all sides, and learn to engage with partners as a team, not as enemies.

Reversed

Humiliation • Bullying • Reconciliation

Defeat can carry fundamental feelings of humiliation, but there's no shame in making a strategic decision to withdraw. Bullying stems from overbearing willpowers trying to win at any cost. Instead, use your intuition and practice reconciliation.

SIX OF SWORDS

• *Aquatic Gilled Mushroom* •



Mushrooms are commonly seen dotting a forest floor, but the aquatic gilled mushroom species found a different habitat, submerged beneath the surfaces of cold streams in Oregon. The Six of Swords encourages that kind of exploration.

Upright

Distance • Explore • Release

Allow yourself deliberate space away from persistent conflicts. To guarantee productivity, explore new environments. The initial sadness of moving away from the familiar is replaced with the satisfaction of achieving mental clarity.

Reversed

*Unfinished Business • Resistance to Change •
Feeling Trapped*

Free your mind from dramatic entanglements and lighten your load by releasing any baggage that could be adding to delays. Resisting change only strengthens the cage bars around a closed mind.

SEVEN OF SWORDS

• *Amethyst Deceiver* •



Beautiful but deceptive like the Seven of Swords' theme, the amethyst deceiver mushroom by itself is an edible fungus—however, it readily absorbs poisonous arsenic from the surrounding soil.

Upright

Theft • Strategic • Deceit

Thieves come in all forms, as do their intended targets: both tangible and intangible. Don't be deceptive. Use your acumen to avoid abandoning your morals, but find shortcuts in a strategically benevolent manner. History remembers deceitful tactics.

Reversed

Victimhood • Impostor Syndrome • Keeping Secrets

Swindlers may steal away hard-earned notions of self-worth, resulting in impostor syndrome. Recognize what affronts hold no merit, and don't slide into insincere victimhood. Trust your intuition and act with honorable strategy.

EIGHT OF SWORDS

• *Columned Stinkhorn* •



The columned stinkhorn writhes out of an underground egg sac into a smelly alien-looking cluster of tentacles bound by the tips. Though seemingly fixed in place, this fungus has created an amazing solution to spread its spores. Like the Eight of Swords, remember to break through self-imposed blinders to appreciate the resources around you.

Upright

Injury • Restriction • Victim Mentality

You are unable to take action due to the restriction of a physical injury or mental trauma. But this outside force has trapped you in an *escapable* predicament. Rely on intuition rather than your thoughts to free yourself.

Reversed

Inner Guilt • Invasive Thoughts • Shame

Free yourself from a negative attitude and self-limiting beliefs. The invasive thoughts buzzing like flies in your mind and manifesting feelings of shame are not the truth, so rework your thought process with a type of therapy that feels right.

NINE OF SWORDS

• *Blushing Milkcap* •



This is the card of anxiety caused by trauma. Blushing milkcaps grow primarily around weeping willow trees, a symbol in historic graveyards representing grief, sadness, and pain. Almost anthropomorphically, milkcaps “weep” white latex from their gills when injured.

Upright

Anxiety • Insomnia • Depression

Past external traumas are keeping you up at night. Face those troubles head-on by talking to someone who can help. Learn what depression might look like for *you*, which could be different from what society characterizes it as.

Reversed

Powerless • Quiet Suffering • Secrets

Inner turmoil churns out feelings of powerlessness. Ask for support from those who love you; suffering in silence is unnecessary and detrimental. Release any harmful secrets in a therapeutically healthy way. Venting helps.

TEN OF SWORDS

• *Anemone Stinkhorn* •



The Ten of Swords announces that what seems like a chaotic explosion might only be a natural transitional event. The reproductive phase of the anemone stinkhorn looks and smells like a struggle has ended violently, but there's poignant peace within the dramatic scene.

Upright

Painful Endings • Lessons • Crisis

An arrangement is ending painfully—maybe even inevitably—but there will be rest following this trial. Appreciate the lessons you've learned from this hard time instead of focusing on the crisis itself.

Reversed

Through the Storm • Rejuvenation • Relapse

You've made it through a personal storm. Emotions and internal mental chatter may run high during the de-escalation period, having been triggered by this change of mood. Rejuvenation is key to avoid relapse.

PAGE OF SWORDS

• *Deadly Galerina* •



The Page of Swords asks you to *pay attention*. Juvenile haste and impatience could result in a grievous accident. The deadly galerina is a toxic brown mushroom that mingles with many edible look-alikes. Also known as “funeral bell,” this fungus reminds you to balance curiosity with wisdom.

Upright

Curiosity • Alertness • Details

This card encourages your mental zeal to “go for it!” Combine the momentum of a curious mind and its thirst for knowledge with acute attentions paid to important details.

Reversed

Gossip • Scatterbrained • Rude

A head full of spinning pinwheels results in obstacles due to scatterbrained plans or miscommunicated rudeness. Stay mindful of your words or you could become a gossip.

KNIGHT OF SWORDS

• *Zombie-Ant Fungus* •



This most energetic card embodies extreme and brazen survival tactics. Like a knight in armor, the zombie-ant fungus infects and uses the hijacked corpse of its victim as its armor and mobility to propagate.

Upright

Intellectual • Focus • Ambition

The Knight of Swords card represents a person who is highly intelligent but craves stimulation or becomes bored. Balance this card with compassion and foresight. It could also signify acting bravely on daring proposals.

Reversed

Relentlessness • Mind Games • Chaos

Like a relentless fungus that grows from the head of an ant, chaos can be expected to follow your experience with a reversed Knight of Swords. Retain your moral discipline.

QUEEN OF SWORDS

• *Lion's Mane* •



Lion's mane mushrooms are royally positioned in the realm of medicinal fungi. Known for promoting nerve regeneration and the production of healthy brain cells, this mushroom represents an independent spirit that effectively shares their ideas for the betterment of their kingdom.

Upright

Objective • Business-Minded • Domestic Harmony

A competent thinker cuts through the bluster of miscommunication with sound judgment and clearly articulated plans. A safe and well-managed environment overseen by a fair leader allows for harmonious productivity.

Reversed

Frankness • Bitterness • Manipulation

The mind is leading the heart, and harsh judgments are received bitterly. Being frank will get a point across efficiently, but unfounded or unrealistic commands can be perceived as manipulation. Try to direct your focus inward for solutions.

KING OF SWORDS

• *Destructive Pholiota* •



A kingly decomposer, the destructive pholiota breaks down decaying wood efficiently. This is a large mushroom that bursts from the cracks of aspen and poplar logs like a butterfly from a cocoon, which is also a traditional totem for the King of Swords.

Upright

Judgment • Decision-Maker • Confidence

This card represents an unquestionable ability to get things done by confronting the problem head-on. Impostor syndrome has no sway over this King; your qualifications are there! Proceed with confidence and resolve.

Reversed

Misuse of Power • Destructive • Internal Mastery

Misuse of leadership power leads to destructive tendencies, so check in with yourself to avoid tyrannical tendencies. You may not lead a project directly, but you could still play an invaluable role in its completion.

ACE OF PENTACLES

• Périgord Truffle •



Finding a Périgord truffle is as impressive as receiving a powerful Ace card. Trained dogs and foragers hunt these precious truffles that fetch high prices at auction. With an aroma of forest floor and cocoa, this fungus is a treasure from the earth.

Upright

Abundance • Prosperity • Windfall

This card overrules any nearby negative cards. Abundance and material prosperity will result in the beginning of a financial or holistic windfall. An overall improved quality of life is possible.

Reversed

Anxiety • Financial Mistakes • Missed Opportunities

Poor financial choices, rocky relationship issues, and the feeling of missing out may bury your productivity in a landslide of anxiety. Conserve your resources to avoid a fiscal emergency.

TWO OF PENTACLES

• *Barometer Earthstar* •



This card declares the need for balance and is an indicator of someone juggling too many tasks. The barometer earthstar is able to thrive by making instinctual decisions in regard to its surrounding weather, moisture, sunlight, and the seasons, keeping all factors expertly in check to survive.

Upright

Decisions • Responsibilities • Time Management

Review your fundamental assets and see if they are balanced with one another. Are you too busy for romance? Is your partner being neglected? Is work overwhelming your rest and recovery time? Create a tangible list you can reference to rebalance your life.

Reversed

Overcommitment • Overspending • Adapt

Rearrange your priorities. Working too hard or overspending can lead to imbalances with friends and family. Be patient and adaptive, and communicate clearly. Recognize superfluous projects and evaluate their long-term benefits.

THREE OF PENTACLES

• *Green Elf Cup* •



The color from green elf cups stains gray-brown decaying wood into a beautiful shade of turquoise. The different elements, as if assembled by the hand of a skilled craftsperson uniting them, harmonize like a work of art—a perfect match for the Three of Pentacles, which emphasizes teamwork.

Upright

Teamwork • Collaboration • Apprenticeship

Everyone has an important role to play in the construction of an important, possibly monumental task. Recognize and respect the value of different skill levels and expertise. Consider an apprenticeship.

Reversed

Competition • Ego • Working Alone

A disharmonious team can cultivate infighting and needless competition. Keep egos in check. Alternatively, this card suggests working on a project independently—but be sure to reach out for help or advice should you become stuck.

FOUR OF PENTACLES

• *The King Oyster* •



The king oyster mushroom luxuriates in its secure and pristine spot (its mycelium block). One fruiting body of this stout fungus has hoarded all the nutrients (a habit this card warns of), leaving little else for any developing mushrooms. While secure, it is for the most part alone.

Upright

Security • Insecurity • Hoarding

A death grip on important possessions can cause you to hunker down or bind you to a fixed spot. Here, insecurity flourishes. Release any desire to hoard; protect your things in healthier ways.

Reversed

Materialism • Overspending • Donating

Putting too much meaning into material possessions can result in greediness. You've worked hard for financial success, but don't become a stingy prisoner bound to your treasures. Spread the wealth, unclutter yourself, and consider donating what you don't need.

FIVE OF PENTACLES

• *Devil's Cigar* •



The rare devil's cigar is found only in a couple of small habitats worldwide. These mushrooms pop open with an audible hiss, throwing off a puff of spores to spread via the wind. Deforestation threatens this species; its vulnerability makes it appropriate for the Five of Pentacles card, which forewarns of an upcoming struggle.

Upright

Loss • Hardship • Struggle

You may lose something significant soon. To soften this potential hardship, be adaptable and aware of your assets.

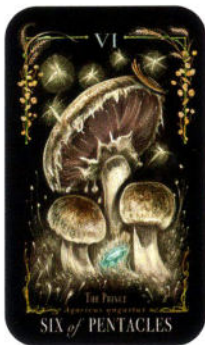
Reversed

Healing from Neglect • Forgiveness • Positive Changes

Any suffering you've experienced because of the meanness or neglect from others will fade. You'll find a more welcoming crowd when you connect with your own identity and celebrate it.

SIX OF PENTACLES

• *The Prince* •



This prince is a mushroom known for its bounteous size and sweet almond smell. The spores from the prince produce a royal purple or chocolate brown spore print used in identifying this generously fruitful fungus. It's a good match for the Six of Pentacles card, which represents generosity.

Upright

Generosity · Support · Gratitude

If you are financially able to help the less fortunate, do so. If you are being supported by a generous donor, remember to reciprocate by communicating your genuine gratitude. Kind words can be priceless.

Reversed

Quid Pro Quo · Selfish Motives · Resentment

Recognize that your generosity may be a one-way road. You cannot expect to be paid back or praised for charity work. Avoid tying strings to your gifts; be selfless, not selfish.

SEVEN OF PENTACLES

• *Dune Cup* •



Buried under sand for most of its life, the dune cup breaks through the surface of the earth by exploding into a black star shape. Sand particles act as vehicles for newly formed spores to create new colonies. Because it's a card of perseverance and appreciation for hard-earned results, the Seven of Cups is well represented by dune cups.

Upright

Big Picture • Planning • Rewards

Hard work will pay off. Keep your eyes on the horizon, and your goals will remain achievable. Take a short break to catch your breath so you can cross the finish line with gusto.

Reversed

Doubt • Scattered Thoughts • Exhaustion

Don't doubt your path; dust away time-sucking, superfluous tasks contributing to your unproductive slump. Consolidate or release insignificant projects to efficiently meet your aspiration. Exhaustion may be creeping in.

EIGHT OF PENTACLES

• *The Blob* •



This card encourages you to pursue hobbies that you are passionate about, much like the bright yellow anomaly called *the blob*. Able to make its own “decisions” and solve mazes, the blob teaches us new ways of being efficient by breaking boundaries between animals, plants, and even fungi.

Upright

Professionalism • Commitment • Expertise

Full immersion into a craft takes a high level of focus and commitment. Time passes quickly when you don't feel like you're working, but your skills will continue to develop. Be confident in your new expertise!

Reversed

Self-Improvement • Rush Job • Repetition

Give sufficient attention to your passions. Tasks may currently seem more demanding than usual, but don't cut corners—shortcuts will be noticed. This card may also indicate that you are in a repetitive job.

NINE OF PENTACLES

• *Wood Blewit* •



Shrouded in hues of royal purple at the peak of their life, wood blewits have historically (and confusingly) been used as a *green* textile dye and are a reward for steadfast late-season mushroom foragers. Covered in royal- and prosperity-colored robes, the Nine of Pentacles celebrates luxury from financial stability earned by hard work.

Upright

Financial Stability · Abundance · Luxury

Your hard work is paying off in independence gained from financial stability. You have what you need; now enjoy the fruits of your efforts with the certainty that you've earned them.

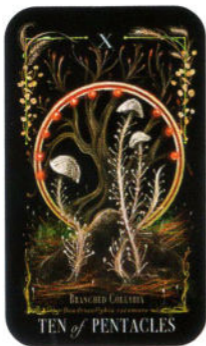
Reversed

Debt · Materialism · Self-Care

Blewits grow by pushing up through accumulated fallen autumn leaves, a heft that can feel as burdensome as debt or unchecked materialism. A weighted blanket might be just what you need to wrap yourself in today to feel calmed and soothed.

TEN OF PENTACLES

• *Branched Collybia* •



This small fungus grows in large clusters, surrounded in a protective familial cornucopia (reminiscent of the Ten of Pentacles, which represents family). These rare mushrooms thrive off of the nutrients of the decaying agaric mushrooms they grow in and on. The *Collybia* in their common name and genus name is Latin for "small coin."

Upright

Familial Stability • Ancestry • Legacy

This card represents a metaphorically or fiscally rich family life with strong ancestral respect. A commendable legacy is yours thanks to your diligent work. Celebrate your long-term satisfaction with your loved ones.

Reversed

Breaking with Tradition • Family Feuds • Debt

Breaking with family traditions for your own well-being may cause feuding with closed-minded relatives. Be careful of poorly made short-term bets that can damage your long-term ambitions.

PAGE OF PENTACLES

• *Hedgehog Mushroom* •



An admired species for novice foragers just beginning their study, bountiful hedgehog mushrooms are easy to identify and are a great introduction to the joys of finding forest snacks. The Page of Pentacles card, with its focus on study and education, pairs well with this favorite fungi.

Upright

Practicality • Studious • Loyal

Skills develop quickly for those who put in the time. Study earnestly and commit to a purpose. Tap in to childhood lessons to smartly maneuver through the initial tangles of a developing plan. Feel free to turn to the tried-and-true basics.

Reversed

Immaturity • Procrastination • Lazy

Being hesitant because you're inexperienced can create obstacles for projects. Follow through with your plans so that you create something more tangible than a day-dream. Avoid childlike procrastination and laziness.

KNIGHT OF PENTACLES

• *White Truffle* •



White truffles set records for growing the largest of their species. Truffle hunters have poisoned competitors' hunting dogs in attempts to gain an advantage in this financially cutthroat business. This card warns against such unscrupulous practices that may arise from hunts (or pursuits?) that seek perfectionism and success at any cost.

Upright

Hard Worker • Competent • Patience

You are able to execute tremendously intricate plans via your commendable work ethic. You have the competence and resources to reach your goal. Patience, attention to detail, and diligence will fast-track a successful outcome.

Reversed

Lack of Drive • Disorganization • Risky Investments

You have the vision but lack the needed work ethic. Research, nail down a plan, and highlight important short-term goals. Do not resort to brutal methods to expedite your reward.

QUEEN OF PENTACLES

• *Elegant Earthstar* •



The elegant earthstar protects its spores within a folded body and protective spore sac. To reproduce, the earthstar folds its "rays" beneath the surface of the sand, securing itself; then raises its body into the wind, allowing the spores to disperse. This resonates with the shrewd and matronly care the Queen of Pentacles exudes.

Upright

Compassion · Care · Humility

Your level-headed authority helps you develop compassion and care for your treasures, be they material items or special someones in your life. Aware of your wealth and luxury, you prefer to offer generous but humble support.

Reversed

Self-Care · Jealousy · Selfishness

Direct this potent nurturing energy inward. To care for others, you must care for yourself. Alternatively, this card denotes jealous colleagues or selfish figures in your life prone to intense interests in material possessions.

KING OF PENTACLES

• *King Bolete* •



This substantial edible mushroom is a meaty giant that could be a feast in itself. As the King of Pentacles card rules this suit, the king bolete reigns over the forest floor and provides food for many animals and insects. Its flesh does not change color like other boletes when sliced or bruised.

Upright

Prosperity • Protection • Dependable

Your needs are completely met and material security has been attained by your calloused hands. You can support and offer protection to others by sharing the bountiful wealth you've secured.

Reversed

Gambler • Controlling • Corruption

Don't place material importance over your relationships. Gambling with valuable objects or others' lives just because you're able to shows your propensity for corruption and greed. It is not an admirable show of status.



Major Sources Cited

Books

Tarot Made Simple: The Ultimate Guide to Casting Spreads and Reading the Cards by Liz Dean (Fair Winds Press, 2018).

The Complete Language of Flowers: A Definitive and Illustrated History by S. Theresa Dietz (Wellfleet Press, 2020).

“Forensic Mycology: Taking Hebeloma to Court” by Danny Haelewaters (DannyHaelewaters.com).

National Audubon Society Field Guide to North American Mushrooms by Gary H. Lincoff (Chanticleer Press, 1981).

Websites

- BiddyTarot.com
- First-Nature.com
- ForagerChef.com
- iNaturalist.org
- Labyrinthos.co
- LearnTarot.com
- MushroomExpert.com
- MushroomMountain.com
- NumerologySign.com
- TarotMerchant.com
- TarotOak.com
- TheTarotGuide.com
- ThisMightHurtTarot.com
- WildFoodUK.com
- Wikipedia.com

About the Author

Sara Richard is an artist and writer living in the woods of New Hampshire, surrounded by screaming blue jays and quiet toadstools. She has illustrated covers and interior stories for comic books for a decade, and has illustrated a previous tarot set for DC Comics. Her art has been displayed in galleries from London to Los Angeles and from Seattle to Salem, Massachusetts.

Sara's interest in mycology emerged just before the start of the COVID-19 lockdowns. On a hike up Crotched Mountain with her friend Natalie, Sara found her first chicken of the woods mushroom (The Fool card of this deck). After Sara researched its edibility thoroughly and got over an ingrained societal fear of poisoning herself with wild fungi, her world expanded to involve the phenomenal and fantastical science of mycology and the joy of foraging. She hopes that the transcending connection foraging brings by uniting people to nature will rub off on whoever bonds to this tarot deck.

When not searching for new (to her) species of mushrooms, making art, or writing, Sara is watching horror movies, cleaning forgotten gravestones with her mom, and collecting possibly haunted curios from the nineteenth century. Her online gallery can be found at SaraRichard.com.

Notes



Notes



Notes



Notes



Notes



