

**THIS DYNAMIC, POTENT DECK WILL
EMPOWER YOU TO NAVIGATE THE UNIVERSE,
TAKE CHARGE OF YOUR LIFE AND MANIFEST YOUR
IDEAL FUTURE. WHAT ARE YOU WAITING FOR?**



The Crystal Magic Tarot deck and guidebook expands the traditional use of tarot beyond future predictions into the world of intention-setting. Tarot expert Kerry Ward and witch and crystal addict Clare Gregory have combined their knowledge to produce this 78-card tarot deck, which will enable you to take hold of your destiny and manifest your future.

Each card is beautifully illustrated and is linked to both a crystal, which either amplifies or protects you from its energy, and an affirmation, which will help you to achieve your goals. You don't have to have 78 crystals to make this work, at its most basic, you need just one. With several tarot spreads suggested in the booklet – from how to attract wealth, to new beginnings and feeling loved – the crystal's role is to bring power to your intention, and you can carry it around to remind yourself of this. Unique and powerful, this deck will make your dreams a reality.

 **THE CRYSTAL MAGIC TAROT** 

KERRY WARD & CLARE GREGORY

OH

THE CRYSTAL MAGIC TAROT



**MANIFEST
YOUR DREAMS WITH
THE POWER OF CRYSTALS
& WISDOM OF TAROT**

KERRY WARD & CLARE GREGORY

THE CRYSTAL MAGIC TAROT



**MANIFEST YOUR DREAMS
WITH THE POWER OF CRYSTALS
& WISDOM OF TAROT**

Published in 2022 by OH Editions
Part of Welbeck Publishing Group.
Based in London and Sydney.
www.welbeckpublishing.com

Design © 2022 OH Editions
Text © 2022 Kerry Ward and Clare Gregory
Illustrations © 2022 Visions in Blue

Kerry Ward and Clare Gregory have asserted their moral rights to be identified as the author of this Work in accordance with the Copyright Designs and Patents Act 1988.

All rights reserved. No part of this publication may be reproduced, stored in a retrieval system, or transmitted in any form or by any means, electronically, mechanically, by photocopying, recording or otherwise, without the prior permission of the copyright owners and the publisher.

A CIP catalogue record for this book is available from the British Library.

ISBN 978-1-91431-754-5

Publisher: Kate Pollard
Desk Editor: Matt Tomlinson
Editor: Wendy Hobson
Designer: Claire Warner Studio
Illustrator: Visions in Blue
Production controller: Arlene Alexander

Colour reproduction: p2d
Printed in China by Leo Paper Products Ltd.



10 9 8 7 6 5 4 3 2 1

Disclaimer

All trademarks, quotations, company names, registered names, products, characters, logos and catchphrases used or cited in this book are the property of their respective owners. This book is a publication of OH Editions, an imprint of Welbeck Publishing Group Limited, and has not been licensed, approved, sponsored, or endorsed by any person or entity.

Illustrations by
VISIONS IN BLUE

THE CRYSTAL MAGIC TAROT



MANIFEST YOUR DREAMS
WITH THE POWER OF CRYSTALS
& WISDOM OF TAROT

KERRY WARD &
CLARE GREGORY

OH EDITIONS

**MANIFEST
YOUR BEST LIFE
BY DRAWING ON
THE ULTIMATE
POWER DUO:**

**THE UNIVERSAL
WISDOM OF TAROT
+
THE MAGICAL
ENERGY OF CRYSTALS**



CONTENTS

Introduction	7
How Do Crystals Work with Tarot?	11
Crystal Tarot Card Meanings -	
The Major Arcana	17
0 The Fool	19
1 The Magician	21
2 The High Priestess	23
3 The Empress	25
4 The Emperor	27
5 The Hierophant	29
6 The Lovers	31
7 The Chariot	33
8 Strength	35
9 The Hermit	37
10 The Wheel of Fortune	39
11 Justice	41
12 The Hanged Man	43
13 Death	45
14 Temperance	47
15 The Devil	49
16 The Tower	51
17 The Star	53
18 The Moon	55
19 The Sun	57
20 Judgement	59
21 The World	61
The Minor Arcana	63
The Suit of Coins	64
The Suit of Swords	78
The Suit of Wands	92
The Suit of Cups	106
Manifesting Crystal Spreads	121
The Tarot Crystal Spreads	124
To Attract Wealth	124
To Clear the Air	126
For a New Beginning	127
To Find Your True Calling	128
To Feel Loved	129
To Mend a Broken Heart	130
Designing Your Own Spreads	131
Looking After Your Crystals	132
Use Crystal Tarot to Make Your Dreams a Reality	134
Quick Reference Correspondences for the Major Arcana	135



INTRODUCTION



Welcome to *The Crystal Magic Tarot*. We are so pleased to meet you! We can't wait to guide you through this deck and the ways in which it can change your life. We are Clare, a witch, jeweller and crystal addict, and Kerry, who has been reading tarot cards for over 25 years. To create this book, we have combined our expertise because we both believe that, used together, crystals and tarot cards make a power couple like no other.

CLARE INTRODUCES HER PASSION FOR CRYSTALS

'I remember when I first discovered the intoxicating magic of crystals. In the Midlands town where I grew up in the 90s, there was one little hippy, esoteric shop. I loved it. I grabbed every opportunity I had to go there and browse the rows of band t-shirts, smell the boxes of exotically powerful incense, try on the Stevie Nicks-style long skirts and fringed kaffans, and any money I had I would buy something, anything, from there. It was heaven. One day I found some beautifully polished, glassy spheres glinting at me from the shelf, a little bigger than marbles, and I was entranced. I needed them.

'I bought four – black, purple, blue and

green – and I carried them everywhere with me. They felt powerful and otherworldly. I held them tightly and whispered wishes to them, with my eyes shut tight, as I concentrated my thoughts at them. I sat quietly, holding them softly, imagining a buzz in my hands, a tingle in my fingers.

I didn't know I was a witch then – when I sat under the Moon on my windowsill for hours as a teen. I had never read a book about witchcraft or crystals, I just did these 'strange' things. Looking back, those marbles I bought were probably just glass, but that didn't matter. And that's kind of the point of this deck. Crystals are magical, yes, but it's your energy that gives them power.

'Since then, I've learned more about my craft and about crystals but I still feel as excited about them as I did back then. I still get that same buzz when I visit my local crystal shop and feel unstoppable when I leave with a bag of Earth-made magic in my hands.

'Whether or not you have ever felt the buzz of a crystal (chances are you're as stone-obsessed as I am if you're reading this), this book and deck will show you how you can use crystals and tarot together to change your life.'

KERRY BRINGS HER KNOWLEDGE OF TAROT

'I have been reading tarot cards for over 25 years and have been a full-time tarot reader and writer (for *Cosmopolitan* and lots of other magazines and newspapers all over the world) for the last six. Want to know a secret? I am the least magical tarot reader I know. I am not psychic, clairvoyant or hugely empathetic. I don't relate to unicorns, fairies or vague woo-woo. I don't think of tarot as magic. I think of it as a centuries-old repository of human wisdom and life experience, encapsulated into universally understood visual stimuli. The cards help us project, clarify and story-tell our intuition and self-awareness about our life and choices.

'I can therefore tell you with absolute certainty that you don't need to think of yourself as magic in any way to read tarot, to enjoy it and get good readings. We can ALL read tarot. It's a gift to humans from all those who have gone before us in the last 500 years! It's a life tool available to everyone, and my mission is to introduce it to as many people as possible.

'This is the second tarot deck I have created (my first is *The Good Karma Tarot*, aimed at beginners). But this one is really special because it represents a new approach to the cards: using them for manifestation rather than divination.

'To that end, I wanted to create a deck that was a real-life tool, not just a prediction or forecasting guide (although it's that too, so you get a double whammy!). I wanted to make the cards work for you, do a job for you, help you manifest your best life rather than dangle it in front of you, always in the future.

So I joined up with my good friend Clare, who is a silver-smithing witch and total crystal addict (and has got me into crystals in a major way) to create this new approach and system.

'I have written the card meanings specifically to help you use the cards as a manifesting guide – although you can equally use them as a straight prediction tool if you wish.'

MANIFESTLY, A WINNING TEAM

Combining our skills gives you a system that links and harnesses the power of both tarot and crystals. Each card has been given its interpretation, as well the identification of the people it could point to and the other energies it relates to. But at the core of your tarot spread is a talisman intention that focuses on what you are aiming to achieve – so you can pick the right card for the job at hand – and that is coupled with a crystal to bring its age-old power to bear.

We have paired each tarot card to a crystal that aligns with and amplifies its energy, so that you can charge your tarot cards with actual physical, vibrational energy and, in turn, you can infuse your crystals with the meaning and intention of your tarot cards. Together they form a power couple, a set of cosmic twins, which you can use as allies to manifest your heart's desires. This tarot deck is not about predicting the future but about manifesting it.

By charging both cards and crystals with the energy of your intention, you can create a portable talisman embodying your intention to use as a booster, meditate on or just keep with you as a reminder of where you are and where you want to be.

**WE HOPE THIS
DECK BRINGS YOU
MANY HAPPY
READINGS AND,
MORE IMPORTANTLY,
HELPS YOU TO
DESIGN THE LIFE
YOU WANT TO LIVE.**



KERRY & CLARE



HOW DO CRYSTALS WORK WITH TAROT?


Tarot is a young pup compared to millions-of-years-old crystals, first appearing in Renaissance Italy in the fifteenth century, initially as more of parlour game for wealthy nobles but eventually, over time and across Europe, evolving into a divination tool. Tarot very much represents humans' take on how to access their own intuition and insight, with a system of visual stimuli, whereas crystals are a rawer, older and more primal route to accessing what you feel and think. Crystals physically hold their own energy within, whereas tarot is a flat, 2D picture. Only when it is charged does it have meaning - when you understand and believe it.

Crystals and tarot become mystical business partners when you can match up the card meanings with an aligned crystal, because then you have both a visual, tangible and universally understood intention or meaning alongside a physical, vibrational energy source. They are twin flames with the same ambition and intention. When they are in contact in your hands and thoughts, they can charge each other, creating powerful talismans, or allies, to keep with you and on which you can focus your intentions.

BUT HOW DO CRYSTALS ACTUALLY WORK?

Humans have been attracted to coloured, shiny or interesting stones as long as there's been humans and stones on the planet. Ancient Egyptians wore lapis lazuli and turquoise in jewellery and even crushed up galena or malachite to make eyeshadow because they believed it gave them protection as well as beauty. Roman soldiers added onyx to their armour because they believed it made them stronger and gave them protection. Native Americans used azurite amulets to help them contact Spirit guides and red jasper when dowsing for water. In Ancient China, jade was considered more valuable than gold for its healing abilities while amber beads have been found in Britain from more than ten thousand years ago. This crystal obsession is not new, it's in our blood.

If you're looking for a little science behind the magic, here it is. You may have heard that crystals all vibrate at different frequencies, and this is true. In fact, everything on Earth is made of atoms; even you and I have our own frequency. Quartz crystals vibrate at such a precise frequency that they are used



**TAROT CARDS
+
CRYSTALS
+
INTENTIONS
=
POWERFUL
MANIFESTING
ENERGY SOURCE**

in watches to keep time as they help regulate the movement of the clock. Some crystals generate electricity (called piezoelectricity) when they are placed under pressure, so if the crystal is squeezed it makes a small electric spark, like the spark that ignites your oven. Different types of crystal are used in radios to transmit sound at different frequencies. Rubies are used in lasers as they are great at focusing energy. Lithium is used in batteries because it is so highly reactive; it is also present in mood-stabilizing medication! You are probably using crystals to focus, change and store energy in your appliances every day without thinking about it, so using them to focus and change your own energy makes perfect sense.

STILL NOT QUITE ON BOARD?

As humans, we love to attach meaning to things. Four magpies mean there will be a birth. If you drop a knife on the floor, you can expect a male visitor (a favourite saying of Clare's mum). The Fool is the tarot's symbol of new beginnings, the Three of Swords means betrayal or pain, and so on. Some things are lucky, some are unlucky – and that varies in different cultures – some crystals may protect you and some will help you sleep. Even if there is no magic in the stone itself, there are hundreds of years of human thoughts, feelings and beliefs channelled into it – and that is powerful in itself. When everyone believes the same thing, that makes it true. That is how tarot works. That's how money was invented! We all know it's just pieces of paper that have no *actual* value, but we assigned that paper meaning and now it has its own power on a whole other level.

We all 'believe' in crystals to some extent. That's why we give diamonds as engagement rings – they stand for love, happiness and purity. People love giving meaning to things, so even if you don't actually think that an emerald in your house will bring you domestic bliss and stop your housemates bickering all by itself, just seeing that little green stone will remind you that domestic bliss is what you want more than an argument and maybe you'll de-escalate rather than yelling back. So, if nothing else, crystals act as a reminder. It's like looking down at your engagement ring and remembering your fiancé and getting that little love-y glow; that's how crystals can help you. Remember: where your focus goes, your energy flows.

If you wake in the night with the troubles of the world on your mind (as Clare sometimes does) reach for a sugillite or unakite crystal. If nothing else, it is a signal to your mind to hush and, just like a switch, will help to turn off your mind and help you drift back to sleep. Why? In 1799 a British physician, John Haygarth, set out to test a remedy for rheumatic pain. He tested 'Perkins Tractors' – expensive metal rods that were used to draw disease from the body – against cheap wooden rods and found that still, even though the rods he'd used should have done nothing at all, four out of five of his test subjects said their pain was relieved. In fact, the metal rods probably did nothing either, but people used them and their pain was lessened.

In World War II, a doctor named Henry Beecher ran out of morphine whilst treating injured soldiers and so began to use saline solution instead while continuing to tell the

soldiers it was morphine to try to keep them calm. To his surprise, half of the soldiers said that the salt water reduced their pain or took it away entirely. This odd result became known as the placebo effect.

Nowadays medical trials actively use a placebo in blind testing. Neither patient nor researcher knows whether they are receiving the medicine they are testing or a harmless but ineffective alternative. That way they try to ensure a true result, without the subjects being influenced by a certain knowledge that they are taking a new and hopefully effective drug. But it also proves the power of mind over matter because the placebo results can be just as good as the medication. Just believing you are taking something that will help you, can actually help you. This is a perfect demonstration of the power of thought, of how your intention can actually change your reality. That's magical! That's miraculous. The power of thoughts is tangible, real and strong.

Clare quotes a poignant example. 'When my dad was very ill and dying, I moved in with my parents for a few weeks to help my mum look after him. It was during the height of the COVID pandemic and my jewellery business was booming, so there was no way I could stop working. I moved a small workbench and all my tools out of my workshop and into my parents' dining room and worked from there. I soon started to feel super-stressed with the pressures of my business, the pandemic, the worry of my father's illness and the emotional weight I was carrying, so I made myself a giant pendant with a smoky quartz point and wore it every day. Whenever I felt myself getting sad, stressed or overwhelmed, I held

this crystal in my hand and told myself, "it's okay, the Earth has you, you're grounded" and instantly I felt anchored and calmed. Was it the quartz that changed my mindset and sent out vibes on a frequency that made me breathe deeper and slower? Or was it just that I had a hand to hold from the Earth, a comfort blanket that soothed me? It doesn't matter. I made that necklace as a talisman of calm when I needed it and it worked. And you can make crystal talismans work for you too. You can change your thought patterns, your feelings and your future.'

In this book, we are going to show you how it's done.

WHAT IS MANIFESTING AND HOW DOES IT WORK?

Manifesting is different to wishing. You're not blindly hoping, you're not saying a prayer under your breath that some deity will sweep in, wave a wand and *poof!*, you're in your dream job. No, sir; you are your own deity and you are going to make your own magic.

Clare explained how manifesting has helped her. 'When I started my business, Bonearrow, some years ago, I had no money (I actually had considerable debts!), no customers and no jewellery to sell, but what I did have was an intention. Every time I did a tarot spread asking, "what should I do to build my brand?", "how can I make this work?", the Magician card came up, the Eight of Coins came up and my spreads were filled with Aces and the Fool. I knew the Universe was telling me I could do it, but I needed to work! So that's what I did. I soon began doing manifesting spells with crystals and using

cards like the Magician or the Queen of Coins as a centre, a focal point. Every day I would ask myself, "what can I do today to take another step towards my dream?". Even if the only step I could do was to hunt for people who might be my kind of customer on Instagram, that's what I would do. I carried a citrine with me always, I had jade next to my bed, and when I was designing, I sat a stone next to my laptop (that I had to borrow the money from my boyfriend to buy).

'Six years on and I have a shop, hundreds of customers and I support myself fully from my business. And I paid off all my debt. I am living my dream life because I manifested it. I'm not saying I didn't work hard, I did, and the Universe saw that and paid me back in kind.'

So you can see the from that story the difference between manifesting and wishing. A wish might come true if the fates are smiling down on you, but if you set an intention and start to work towards it, that's telling the Universe you're serious about it and the Universe will have your back. If you focus your energy, just like a ruby focuses light into a laser, things will start to happen.



**YOU CAN
CHANGE YOUR
THOUGHT
PATTERNS,
YOUR FEELINGS
AND YOUR
FUTURE**



CRYSTAL TAROT CARD MEANINGS

THE MAJOR ARCANÆ

There are 22 major arcana cards in a tarot deck, numbered from 0 – 21. The major arcana are the 'power cards' of the tarot, representing cosmic forces at work on our lives, major milestones, revelations and transformations.

The major arcana begins with the ignorant-but-inspired Fool and ends with the 22nd card – the World. Some of the cards represent character strengths, some are a call-to-action, some describe talents or skills or warn against following path of least resistance.

When you pull several major arcana cards in one reading, you know you're in for a significant period of change, growth and external forces altering your world and your mindset.

Each of these cards has an associated talisman, interpretation, correspondences, person, affirmation and crystal. They will allow you to extract the full range of possible meanings and use the card in your intention and manifesting rituals. In each description you'll also find a shadow-side interpretation to reveal the card's negative energies. If you pull the card upside-down or this answer feels more relevant to the question you asked, then use this.



THE FOOL

TALISMAN

I wish to begin a new chapter of my life.

INTERPRETATION

The first card of the tarot, and therefore its patron saint, represents new beginnings. The Fool is a definite, clear signal that you are ready (and excited) to start a new adventure in life. That adventure may be something that feels inspiring and hopeful. Perhaps others may raise an eyebrow or disapprove. Let them! They don't have to live your life ... you do!

As an attitude or approach, the Fool advises courage, optimism and enthusiasm. Be led by your best hopes right now, not your worst fears.

On the shadow side, the Fool can be naïve, wilfully blind to the risks or issues ahead, and intent on sticking to a plan that simply won't work. He learns in time.

CORRESPONDENCES

This card is all about new and optimistic energy. That new energy also relates it to Aquarius, the Air sign that rules in late January and February.

PEOPLE REPRESENTED

If the Fool represents a person in your reading, it's likely to be someone younger or with a youthful outlook, who may be influencing you to make a bold leap. They may be one of the Air signs, possibly Aquarius.

AFFIRMATION ASSOCIATED WITH THIS CARD

The world is full of limitless opportunity. I can only succeed.

CRYSTAL ALIGNED WITH THIS CARD: GREEN AVENTURINE

Green aventurine is a stone full of positive energy that perfectly matches the optimism and enthusiasm of the Fool. This crystal attracts prosperity, enhances creativity and stimulates perception, which is needed if you're beginning a new project or starting out on a new path. When you need a lucky charm, green aventurine's magnetic energy will be sure to bring you good fortune and opportunity in abundance. And, if you want a new beginning but can't seem to work out how to make it happen, green aventurine can help you see alternative possibilities, which means you may discover opportunity in unexpected places.



1 THE MAGICIAN
JADE

THE MAGICIAN

TALISMAN

I am creating something new and unique.

INTERPRETATION

The Magician is a wonderful card that revolves around creation and creativity. It represents the imagination and determination to make something unique, a product of your talent and wits but something the world wants so there's the potential to make a good living from it. Entrepreneurship, self-employment, creative projects and education are all strong themes with this card. You are learning to tap into your unique palette of talents and strengths and to make something of them. As an attitude or approach, the Magician asks you to lean on and amplify your skills, experience and strengths; to have confidence in yourself and your ability to create something valuable and innovative. You are inventing with purpose.

On the shadow side, the Magician can be overly confident and overly convinced of their own opinion and cleverness. Sometimes it is better to be humble than righteous.

CORRESPONDENCES

The Magician is associated with Mercury, which links both to the Air sign Gemini

(late May through June) and the Earth sign Virgo (late August through September). It is also linked to Wednesdays.

PEOPLE REPRESENTED

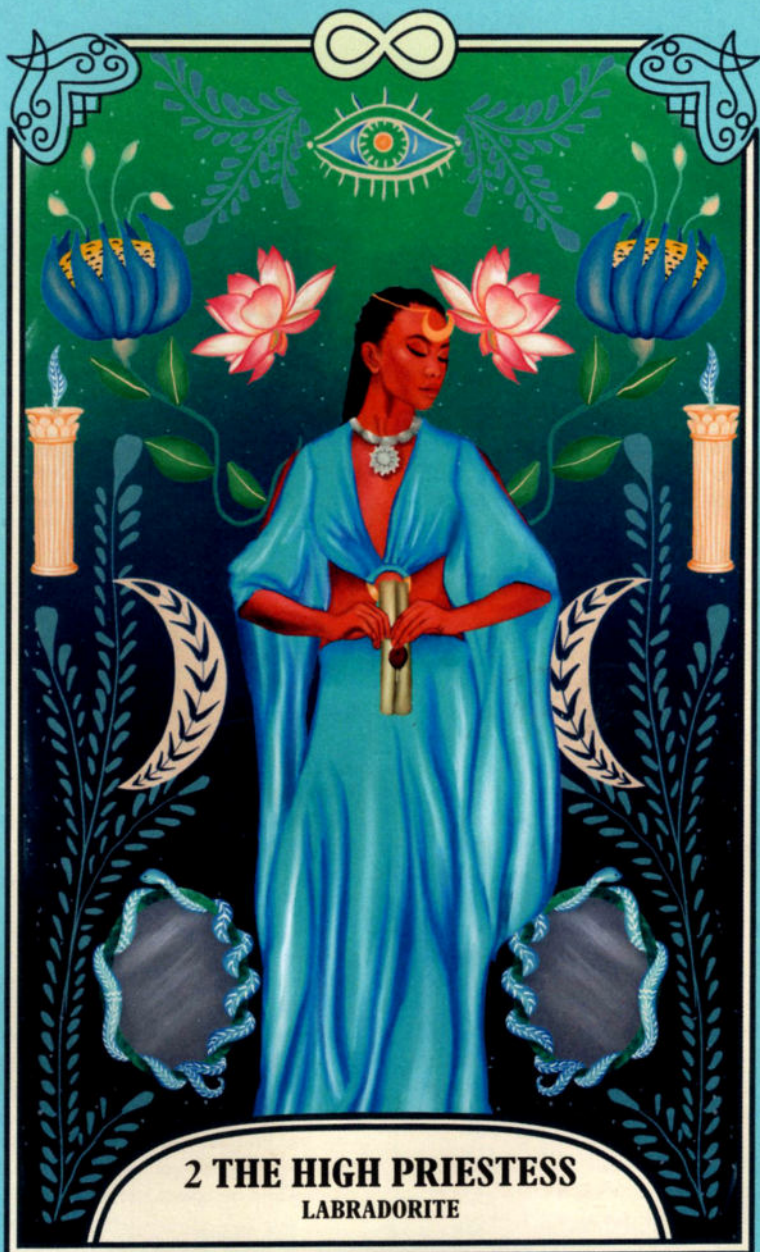
If the Magician represents a person in your reading, it's likely to be someone who is talented, inspiring, self-starting and full of ideas (which actually come to fruition). They could be a Gemini or a Virgo.

AFFIRMATION ASSOCIATED WITH THIS CARD

I have the power to manifest my ambitions and create something new.

CRYSTAL ALIGNED WITH THIS CARD: JADE

Jade is a crystal traditionally associated with good luck and wealth, but it's even more special than that. Jade helps you to know yourself – and when you know yourself, you can be yourself and let all your talents and unique skills shine. This authenticity brings prosperity and abundance, luck and fortune in the best possible way, through exercising your own imagination and skill. Jade brings the self-confidence you may need to put your dreams and ambitions into action.



2 THE HIGH PRIESTESS
LABRADORITE

THE HIGH PRIESTESS

TALISMAN

I am connecting to my intuition and inner wisdom to guide me.

INTERPRETATION

The High Priestess is always a major nudge to trust your gut and follow your instincts. If you don't yet know what they are, it will help you find time and space to tune in and listen to that inner voice because it has such important insights to share. Meditate, ruminate, take long walks in nature, practise yoga, journal. Focus on solo and contemplative exercises.

As an attitude or approach, this card is telling you to be led by your intuition, your feelings about a situation, person or prospect. The answers already lie within – you just need to access them.

On the shadow side, the High Priestess can be secretive, overly protective of her knowledge and prone to self-absorption rather than action. Don't get lost in reflection.

CORRESPONDENCES

The High Priestess is associated with the Moon as its ruling planet, which links to the Water sign Cancer (late June through July) and potentially any major Moon phases (new or full). It is also linked to Mondays.

PEOPLE REPRESENTED

If the Priestess represents a person in your reading, it's likely to be someone who is very spiritual, enigmatic and compassionate; potentially a teacher or mentor figure. This person could be a Cancerian because both this card and Cancer are ruled by the Moon.

AFFIRMATION ASSOCIATED WITH THIS CARD

My intuition is guiding me every day towards what's best for me.

CRYSTAL ALIGNED WITH THIS CARD: LABRADORITE

Labradorite strengthens psychic ability and awakens your intuition, helping you connect to spiritual guides and access other realms, in yourself and beyond. If it's an inner journey you embark upon, let labradorite be your guide, shaman and counsel. This beautiful stone with its bright flashes of blue and green, like the Aurora Borealis, even looks as though it holds the secrets to the mysteries of the universe. Inuit legend says that labradorite fell from the skies as the frozen fire of the Northern Lights and it has been known as a magical talisman and powerful protection stone for centuries.



3 THE EMPRESS
CHRYSOCOLLA

THE EMPRESS

TALISMAN

I wish for abundance in my life.

INTERPRETATION

The Empress is like a Mother Nature figure representing animals, children, family, creativity, abundance, love and the natural world – simply, the best pleasures in life that are free. Fertility is heavily associated with this card, so it can indicate the birth of something in your life (perhaps a child, but maybe also a pet, home, project or relationship).

As an attitude or approach, this card advises you to invest in those you love, to be nurturing, kind, motherly and protective.

On the shadow side, the Empress can be co-dependent upon or over-protective of those she loves and cares for. You need to let them find their own way, even if it clashes with yours.

CORRESPONDENCES

The Empress is associated with Venus, which links to Taurus (late April through May), an Earth sign, and Libra (late September through October), an Air sign. It is also linked with Friday.

PEOPLE REPRESENTED

If the Empress represents a person in your reading, it's likely to be a matriarchal character. Someone who is kind and peaceful, who loves animals, and is creative and outdoorsy. This person could be a Libra or Taurus.

AFFIRMATION ASSOCIATED WITH THIS CARD

I am abundant and attracting new life into my world.

CRYSTAL ALIGNED WITH THIS CARD: CHRYSOCOLLA

Chrysocolla is a stone of wisdom, feminine power and intuition. It is a gentle but powerful crystal associated with nurturing, comforting and life-giving femininity. With its deep, rich colour, this copper-based stone brings support and compassion and can aid forgiveness and lift depression. Whenever you feel as if you need the comfort of home-cooked food, a day under a heavy blanket or a reassuring hug, chrysocolla is there for you. As a talisman, chrysocolla can be used for any relationship that needs nurturing or healing or in a situations or places (especially at home) that require stability.



THE EMPEROR

TALISMAN

I am taking responsibility.

INTERPRETATION

The Emperor dictates control, leadership, authority and conviction and is the patron saint of intention-setting and manifestation. He puts his agenda front and centre and focuses on it with intent and purpose.

As an attitude or approach, this card is telling you to be single-minded, dominant, focused and even a little ruthless. Bare your teeth and claws if you have to, because we all have to fight for our spot sometimes.

On the shadow side, the Emperor can indicate unhealthy control or domineering patterns of behaviour. Examine yourself and your relationship dynamics for signs of imbalance.

CORRESPONDENCES

The Emperor is associated with Aries (late March through April). Mars is the planet of Aries, also sealing the connection to the Emperor for the Fire planet and its associated day, Tuesday.

PEOPLE REPRESENTED

If the Emperor represents a person in your

reading, then it's someone who is rational, shrewd, authoritative and powerful, possibly an Aries. They are perhaps going to help you progress, or maybe you see them as a role model to emulate. We rise (or fall) according to the company we keep, so having a few Emperor people around you is no bad thing in this life, as long as they're not too dominant a force in your life.

AFFIRMATION ASSOCIATED WITH THIS CARD

I focus with intent on my goals every day.

CRYSTAL ALIGNED WITH THIS CARD: LAPIS LAZULI

A mystical treasure prized by Ancient Egyptians who ground it into a powder to use as eye shadow, lapis lazuli is an action stone that brings wisdom, authenticity and honesty. It can help you take charge of your life, or of a specific situation. A deep blue stone that sometimes has flecks of pyrite (a powerful action stone, see The Chariot, page 33) that sparkle like stars in a midnight blue sky. If you need to be honest with yourself or face up to an essential truth, let lapis lazuli be your counsel and set you on your higher path.



5 THE HIEROPHANT
SODALITE

THE HIEROPHANT

TALISMAN

I wish to contribute to the greater good of my family / community / society / planet.

INTERPRETATION

A hierophant is actually a priest who interprets esoteric mysteries. This card asks you: 'what do you believe in?' and guides you to assess whether this belief and faith is still serving you well - whether it is relevant, necessary and right. Are you authentic in following through in what you believe in? Are you honest about your alignments? It urges you to stand by the structures you belong to and trust.

As an attitude or approach, this card is telling you to work towards the greater good, to join in and be a part of something bigger (and better) than anything you could achieve alone.

On the shadow side, the Hierophant can be overbearing and self-righteous, believing his opinion to be somehow above that of others and worthy of blind consent and acceptance.

CORRESPONDENCES

The Hierophant is associated with Taurus (late April through May) and because of Taurus's links to Venus, could also be said to represent Fridays. It corresponds to the energies of the Earth.

PEOPLE REPRESENTED

If the Hierophant represents a person in your reading, they might be a Taurus, or they're a person who has some position of authority in relation to you - perhaps a teacher, parent, spiritual guide, boss or someone working in an institution like the law or medical profession, even a community figurehead.

AFFIRMATION ASSOCIATED WITH THIS CARD

My contribution makes a positive difference in the world.

CRYSTAL ALIGNED WITH THIS CARD: SODALITE

A deep blue stone, very similar to lapis lazuli (see The Emperor, page 27), with calcite inclusions that can make beautiful swirling patterns, like a tiny blue planet. Sodalite brings the heart and mind together to achieve mental and emotional clarity, helping you find your truth and your voice. Sodalite is also often associated with idealism and can help you stand up for your beliefs and bring groups or communities together in solidarity and trust for a communal purpose. Use sodalite to strengthen your heart whenever you feel your faith in humanity waning.



6 THE LOVERS
TOURMALINATED QUARTZ

THE LOVERS

TALISMAN

I am clarifying my true feelings and intentions.

INTERPRETATION

The Lovers is a tricky card because it isn't just a symbol of love, passion and romance – though it does signal that feelings are running high.

Since it also represents Gemini, the planet of the twins, themes such as temptation, cheating, distraction, torn loyalties and head-versus-heart decisions are all in play when this card arises. No doubt you're feeling confused and befuddled about what you truly want or feel in your own heart.

As an attitude or approach, this card is telling you to look closely at your emotions, actions and intentions – are they fair, transparent and kind to others? If something feels like temptation, avoid it. This is an important cosmic test.

On the shadow side, the Lovers can be fickle, two-faced, shallow and fleeting in both affection, opinion and loyalties. An avoidance of responsibility is in play.

CORRESPONDENCES

The Lovers is associated with Gemini (late May through June). An Air sign, because Gemini is also ruled by Mercury, it can represent Wednesdays.

PEOPLE REPRESENTED

If the Lovers represents a person in your reading, they might be a Gemini or someone you have very mixed feelings about.

AFFIRMATION ASSOCIATED WITH THIS CARD

I am acknowledging and acting on my true feelings.

CRYSTAL ALIGNED WITH THIS CARD: TOURMALINATED QUARTZ

Tourmalinated quartz is a clear quartz crystal with needle-like threads of grounding, protecting black tourmaline running through it, marrying the properties of quartz and tourmaline together to bring balance and set boundaries. Clear quartz is a stone of focus and positive energy, whereas black tourmaline is protecting and grounding. This blending of two crystals creates a duality in the stone, as many of us have within, and because of this you may find it deeply supportive. Both energizing and grounding, purifying and inspiring at the same time, tourmalinated quartz is the perfect marriage of crystals that can help you feel safe while you navigate your emotional oceans.



7 THE CHARIOT
PYRITE

THE CHARIOT

TALISMAN

I am moving to a new place in the world.

INTERPRETATION

The Chariot is a card of purpose, progress and movement. It urges you to be 'the doer' not the one who is 'done to'. This card is an invitation to enter the battlefield of life and carve out your own niche. Action is needed.

Quite literally, this card can also show up when you have an issue or opportunity regarding location, transportation or travel. So themes such as vehicles, journeys, holidays, extended travel, house or location moves are all in play.

As an attitude or approach, this card is telling you to take purposeful action. Your life won't happen by itself; you're the architect of it, so build it.

On the shadow side, the Chariot can represent single-minded, selfish behaviour. Try to avoid being overly focused on getting ahead rather than enjoying the ride or helping others along the way.

CORRESPONDENCES

The Chariot is associated with Cancer (late June through July) and therefore the Moon, so potentially any major Moon phases

(new or full) are important. It is also linked to Mondays. The Cancer link also means it is associated with Water.

PEOPLE REPRESENTED

If the Chariot represents a person, they may be a Cancerian who is either a supporter of your ambitions and plans or is on the move in a significant way themselves.

AFFIRMATION ASSOCIATED WITH THIS CARD

Successful people keep moving.

CRYSTAL ALIGNED WITH THIS CARD: PYRITE

Also known as 'fool's gold', pyrite is a highly motivating stone of action that strengthens your will and shields you from harm. This crystal's fiery energy will help launch you into action when needed and propel you forward into your next chapter. As a crystal of positive energy, pyrite is extremely helpful for dispelling melancholy and negative thoughts and also helps you to see beyond pretence and falsity and recognize the truth behind a person's words and actions. Pyrite is also said to attract wealth so it's a great stone to use in money spells.



8 STRENGTH
CARNELIAN

STRENGTH

TALISMAN

I want to feel strong and powerful.

INTERPRETATION

Strength is a much more subtle concept than simply force or power, covering traits such as compassion, resilience, courage, wisdom, confidence and vitality. It's up to all of us to exercise our own emotional muscles and flex them to make them stronger, and it's usually only through hardship and challenge that this exercise occurs. In such trying situations we often find our darker traits coming to the fore (anger, competitiveness, resentment, jealousy) and we often try to suppress or deny them.

As an attitude or approach, this card is telling you to take a wander into the shadows and make friends with your demons, because these aspects of yourself can be useful. We all have teeth and claws. We need them.

On the shadow side, untampered strength can tip over into dominant, controlling, angry or suppressive behaviour, seeking power over others.

CORRESPONDENCES

Strength is associated with the Fire sign Leo (late July through August) and as Leo links to the Sun, it also represents Sunday.

PEOPLE REPRESENTED

If Strength represents a person in your reading, they could be a Leo. This person may be an overbearing force or a loyal ally. It might even be that they're a bit of both, in which case this is something you must navigate.

AFFIRMATION ASSOCIATED WITH THIS CARD

All parts of me are valid and I approve of myself fully.

CRYSTAL ALIGNED WITH THIS CARD: CARNELIAN

Carnelian is a powerful crystal of self-confidence, motivation and courage. Holding a carnelian in your palm, you can sometimes feel its fire blazing within; it almost buzzes with positive energy! If ever you need a boost of vitality or a strengthening hand to hold, carnelian is there for you – your cheerleader, your coach and your number one fan, cheering you on and making you feel unstoppable. With its bright, Fire energy, this orange, red or earthy brown stone will boost your immune system, ignite your self-esteem and bring you the inner strength you need.



9 THE HERMIT
BLUE CHALCEDONY

THE HERMIT

TALISMAN

I am focused on completing my most important priority.

INTERPRETATION

The Hermit is a taskmaster, urging you to withdraw from your social life and other distractions to concentrate on, tackle or finish something important that you alone are responsible for.

This solitude might be to reflect on a situation and gain insight about your true role and behaviour (and perhaps face some home truths). It might be to achieve something meaningful which requires your 100% attention. It might be to recalibrate emotionally.

As an attitude or approach, this card is telling you to remain focused, serious, attentive, single-minded and honest. Take ownership for yourself.

On the shadow side, the Hermit can take the isolation thing too far and avoid vital interactions and input. The Hermit can become too removed from community and society.

CORRESPONDENCES

The Hermit is associated with the Earth sign Virgo (late August through September),

which links to the planet Mercury and therefore also represents Wednesdays.

PEOPLE REPRESENTED

If the Hermit represents a person in your reading, they could be a Virgo. It's possible they are older (or richer in life experience) than you and represent a source of wisdom.

AFFIRMATION ASSOCIATED WITH THIS CARD

I take myself and my life seriously.

CRYSTAL ALIGNED WITH THIS CARD: BLUE CHALCEDONY

Blue chalcedony is a stone of calm, serenity and peace. Like a cool, soothing ocean view, it relieves stress and promotes inner peace and self-care. A particularly good stone for inducing a good night's sleep (and dissipating nightmares), blue chalcedony will harmonize your body and mind and promote optimism and enthusiasm. If you need to close the door on the outside world and focus on a task, this crystal can help you ease into that flow zone where time flies by and you come out the other side feeling as though you have been in a deep meditation.



THE WHEEL OF FORTUNE

TALISMAN

I am activating and welcoming change and transformation.

INTERPRETATION

Change is the only constant in life – nothing stays static – and that's good news when you're feeling low but bad news when life is going well. But it's out of your hands. Change comes whether we want it or not. One of life's biggest lessons is learning to handle that and adapt on the move.

When this card appears in a reading, anything can happen. Expect the unexpected!

As an attitude or approach, this card is telling you to be 'the doer' not the one who is 'done to'. Pick a pivot spot on that wheel of fortune and push it yourself. Identify a change you want to see in your life and set out to make it happen.

On the shadow side, the *Wheel of Fortune* can have a chaotic energy, a choppy and careless preference for the untried new rather than the tested old. Be wary of change for the sake of it.

CORRESPONDENCES

The Wheel of Fortune is associated with Jupiter, which links to Sagittarius (late November through December) and sometimes Pisces (late February through

March). Any major transits of Jupiter are also notable. This means it can relate to both Fire and Water. Jupiter is also linked to Thursdays.

PEOPLE REPRESENTED

If the Wheel of Fortune represents a person in your reading, they could be a Sagittarius or Pisces. They are a key player in your personal transformation – for better or worse.

AFFIRMATION ASSOCIATED WITH THIS CARD

My possibilities are endless.

CRYSTAL ALIGNED WITH THIS CARD: SERPENTINE

Serpentine can release the fear of change and help us to take responsibility for ourselves and our purpose. Powerfully transformative, serpentine is a crystal of Earth magic that can gently guide and protect us through the ebbs and flows in our lives, rebirths, changes and travels. Since serpents (after which the stone is named for its appearance) often symbolize rebirth, so this stone has ancient changeling Earth energy. Just as the Earth changes its landscapes and creates new life, and a snake sheds its skin, so must you. Use this crystal whenever you feel that the Wheel of Fortune needs a push.



JUSTICE

TALISMAN

I want to right a wrong.

INTERPRETATION

Justice points to legal, contractual ethical or financial conundrums. The good news is that it's an omen of victory, vindication and being proved right.

When the Justice card appears, it is indicating that you should play fair yourself. Look after your business, be your best self – even if no one is watching. Karma will deal with those who wronged you; don't get involved. Mitigate your victory celebrations with forgiveness and discretion because somebody is not going to feel as happy or rewarded as you.

As an attitude or approach, Justice is telling you to be ethical and fair. Reject gossip, defensiveness, acts of revenge or general negativity related to those who are on the other side of the argument.

On the shadow side, Justice can warn of not acting like a righteous saint (better to be a humble sinner). Righteousness alienates other people, drowns out other opinions and eventually isolates the righteous in a tower built on intensifying delusions.

CORRESPONDENCES

Justice is linked to the Air sign Libra (late September through October) and this sign's planet is Venus, which rules over Fridays.

PEOPLE REPRESENTED

If Justice represents a person in your reading, it's possibly a Libran. This person will be fair-minded, principled and shrewd, and represent a voice you should heed.

AFFIRMATION ASSOCIATED WITH THIS CARD

I am just in my thoughts, words and actions.

CRYSTAL ALIGNED WITH THIS CARD: SAPPHIRE

Blue sapphire brings wisdom, dispels confusion and helps you to see clearly. This beautiful blue precious stone can help you feel more compassionate and empathetic and encourage you to take the higher ground, see the bigger picture and do the right thing not just for yourself but for the greater good. Ancient Greeks often wore sapphire rings when consulting with oracles as they were believed to be a connection to the Spirit world. They have been long associated with royalty as a stone of protection, especially from poisoning.



12 THE HANGED MAN

IOLITE

THE HANGED MAN

TALISMAN

I want to find a new perspective on this obstacle.

INTERPRETATION

The Hanged Man represents limbo, the frustrating feeling of being stuck, of delays and general stalled plans and progress. But, rest assured, that momentum will be regained. In the meantime, this is a good time for reflection.

One trick is to imagine yourself as the hanged man: upside-down. Look at this situation through a kaleidoscope of angles and perspectives. Somewhere in there is a new insight, an 'a-ha' moment which may reveal the way through, and out of, this phase.

As an attitude or approach, the Hanged Man asks you to change the way you're looking at yourself and perhaps also the world around you.

On the shadow side, the Hanged Man can be full of self-pity and firmly rooted in a victim identity, refusing to accept help or see another side to things.

CORRESPONDENCES

The Hanged Man is linked to the planet Neptune, which rules over Pisces (late February through March) but is not associated with a particular day. Pisces is a Water sign.

PEOPLE REPRESENTED

If the Hanged Man represents a person in your reading, they might be a Pisces. Perhaps they are a wise sage who can shed light on why you're stuck here and what to do next. Perhaps they are the root cause of your inability to move forward.

AFFIRMATION ASSOCIATED WITH THIS CARD

I am open to new ways of perceiving myself and the world.

CRYSTAL ALIGNED WITH THIS CARD: IOLITE

When you're looking for a different perspective or need insight, iolite is the crystal to reach for. Iolite helps to clear the mind, activate your intuition and connect you to your inner knowing. This connection allows you to access higher realms and explore dream worlds and helps you to journey outside of the body. If you are struggling with limiting thoughts or negative patterns, iolite can help you see why you're stuck in that loop and illuminate a way out. With an iolite in hand, just like the Hanged Man, you'll soon be looking at things differently.



13 DEATH
JET

DEATH

TALISMAN

I am shedding my old skin and being reborn.

INTERPRETATION

First things first, this card does *not* mean literal death. So don't worry!

It means a significant and lasting transformation is coming, the ending of one cycle and the beginning of another, as natural and necessary as the changing of the seasons. You can't cheat or escape the outcome of this card, so it's advising you to prepare for transformation. Most new beginnings are preceded by an ending of some kind, and we need to learn to live with that truth and flow with it, letting go of the old and welcoming in the new.

As an attitude or approach, Death advises fluidity and flexibility in life. Release old beliefs, habits, behaviour and activities. Let them fade with the old you, ready to evolve and emerge as a new, improved version.

On the shadow side, Death can hint you have been resistant to any changes in your life, and that you need to open up and let this process unfold.

CORRESPONDENCES

Death is associated with Scorpio (late October through November), a Water sign linked

with Pluto. Pluto is not associated with any particular day.

PEOPLE REPRESENTED

If Death represents a person in your reading, they could be a Scorpio. They could be a harbinger of change, a trigger for a new outlook or course, or an ally who can support you through this phase.

AFFIRMATION ASSOCIATED WITH THIS CARD

I am letting go of what was so I can embrace what will be.

CRYSTAL ALIGNED WITH THIS CARD: JET

The ultimate 'memento mori', jet reminds us that everything dies and will be transformed. Jet has long been associated with death, even before Queen Victoria chose to wear it as her mourning jewellery. As it is deeply protective, jet has been used to guide souls to the underworld for centuries. Though not technically a crystal, rather the fossilized remains of monkey puzzle trees that have been compacted in the Earth for billions of years, jet is a very grounding stone that roots you back to the Earth, keeping you anchored through any storm that may blow in.



14 TEMPERANCE
LEPIDOLITE

TEMPERANCE

TALISMAN

I am adjusting to a new normal in life.

INTERPRETATION

Temperance signifies moderation and harmony; purposefully creating balance where there has been imbalance or extremes which have knocked us off kilter.

Life and circumstance constantly reshape our outlook, our values and our core, making us shift position and find stability in each new normal we are pushed into. This is inevitable. We all have to learn to keep rediscovering our balance in an ever-shifting world.

As an attitude or approach, Temperance advises finding moderation in your own beliefs and behaviour. Take nothing to extremes. Stay open-minded.

On the shadow side, Temperance can indicate things have become very much out of kilter and are skewed to one extreme, which is not a sustainable position. Temperance always wants the pendulum to settle in the middle.

CORRESPONDENCES

Temperance is associated with the Fire sign Sagittarius (late November through December). Sagittarius is ruled by Jupiter, which governs Thursdays.

PEOPLE REPRESENTED

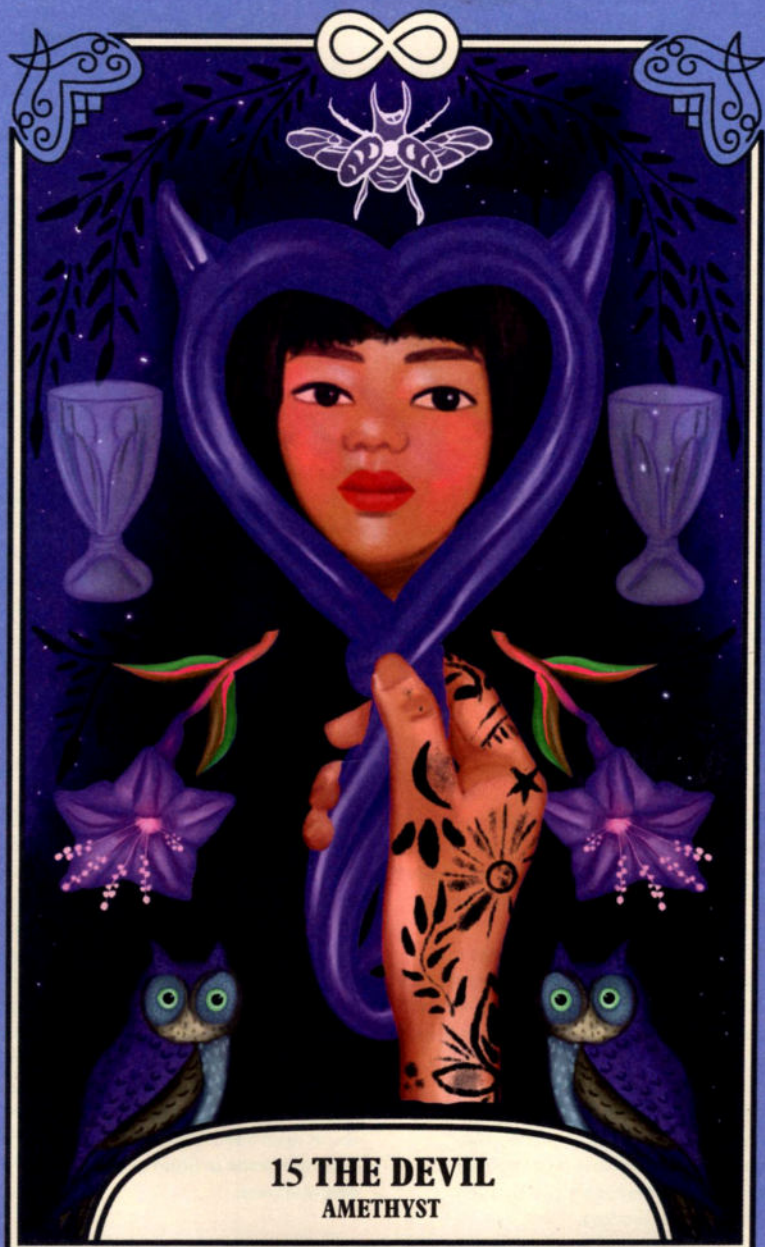
If Temperance represents a person in your reading, they could be a Sagittarius. You may think they are an unlikely source of help and motivation but that's perhaps because they bring a very different perspective to your own.

AFFIRMATION ASSOCIATED WITH THIS CARD

I am creating balance in my life.

CRYSTAL ALIGNED WITH THIS CARD: LEPIDOLITE

Lepidolite is a calming, balancing stone that contains lithium, the stabilizing element prescribed for mood swings. This lilac-pink stone can help you to step away from current processes to bring about positive change, release bad habits and let go of your anxieties and worries to move forward. A stone of transition, lepidolite releases stagnant energy and welcomes in new, uplifting energy in its place. Whenever you are looking for temperance, balance or a middle ground, lepidolite can help release stress and put you on an even keel. A natural antidepressant, keep lepidolite at hand when you feel overwhelmed.



15 THE DEVIL
AMETHYST

THE DEVIL

TALISMAN

I am identifying and eliminating self-limiting beliefs and behaviour.

INTERPRETATION

The Devil illuminates the bad habits: repeat patterns of self-sabotaging behaviour or self-limiting beliefs that are blocking our progress, holding us back, or making us feel shame or guilt. The Devil also brings us the determination and focus to do something about them. Will you?

We are all 100% free to live our lives as we wish, and we are also 100% accountable for those choices. Live through intention not habit. Own your actions!

As an attitude or approach, the Devil tells you to take responsibility for yourself, your thoughts and your behaviour. Know your demons, speak to your shadow side, understand your drivers and triggers. You're receiving a window of opportunity to make a positive change.

On the shadow side, the Devil can be self-destructive, addictive, unkind and willing to sacrifice a greater good for his own, selfish ends. The Devil hints you're in bondage to a habit or belief that does not serve you well.

CORRESPONDENCES

The Devil is associated with Earth sign Capricorn (late December through January). Capricorn is ruled by the planet Saturn, which governs Saturdays.

PEOPLE REPRESENTED

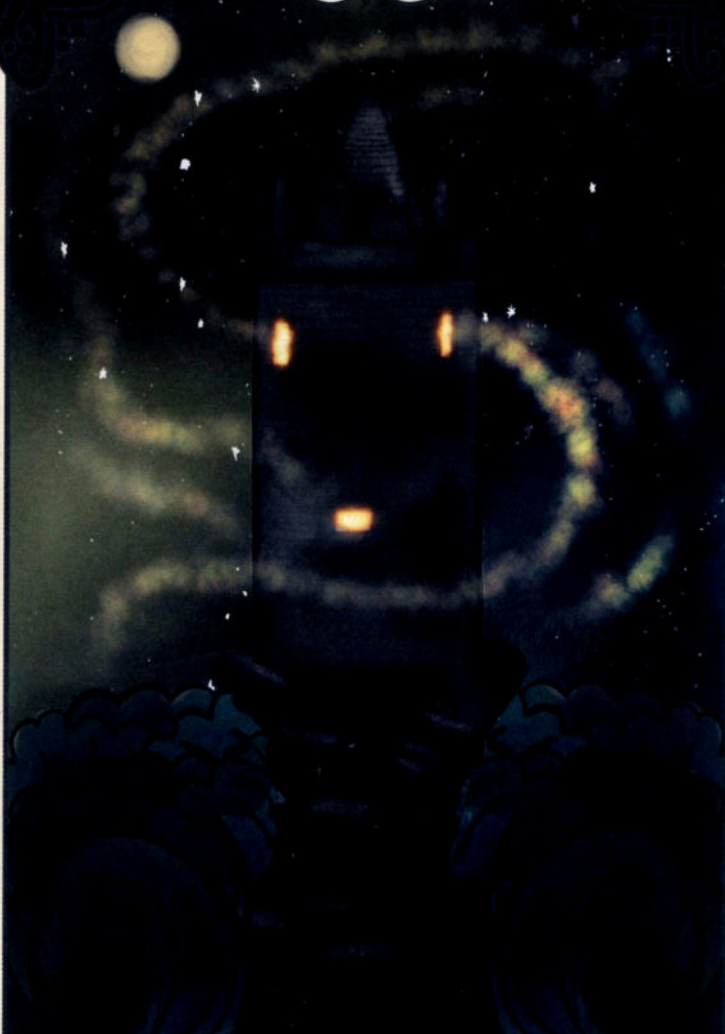
If the Devil represents a person in your reading, then they could be a Capricorn. They could be driving you away from bad habits or behaviour – or possibly deeper into them!

AFFIRMATION ASSOCIATED WITH THIS CARD

I am stronger than my excuses.

CRYSTAL ALIGNED WITH THIS CARD: AMETHYST

Amethyst is often connected with sobriety and spirituality. In Greek mythology the gods drank wine from amethyst goblets as they believed the purple stone would prevent them from becoming overly drunk. This purple wonder stone can help you break bad habits, release negative energy, let go of unhealthy attachments, break addictions and strengthen willpower. Use amethyst whenever you feel scattered or lost and it will bring calm or motivation, as needed.



16 THE TOWER
BLACK TOURMALINE

THE TOWER

TALISMAN

I want to transform this challenge into opportunity.

INTERPRETATION

The Tower brings collapse, shocking revelations, endings and major wake-up calls. All this sounds difficult and challenging (and initially it may be) but events always unfold for a good reason which, in hindsight, you will come to understand.

The Tower serves a purpose: to remove the false, fading or negative energy from your life so you can rebuild on firmer foundations. Acknowledge that whatever has been lost was already on its way out, and the Universe has done you a favour by getting rid of it more quickly! Now you can focus on the future and the possibilities this space provides.

As an attitude or approach, the Tower tells you to stand tall, face the facts, let reality be reality and take it from there. Breathe, refocus, recalibrate and rebuild.

On the shadow side, the Tower warns of destructiveness, brute force or sabotage. Something or someone has an agenda that is not in your best interests, or you may even (unwittingly) be the agent of self-destruction in your own life. Be careful.

CORRESPONDENCES

The Tower is linked to Mars which rules over the Fire sign Aries (late March through April) and the Water sign Scorpio (late October through November). Mars also rules over Tuesdays.

PEOPLE REPRESENTED

If the Tower represents a person in your reading, they could be an Aries or a Scorpio. They might be the catalyst of change in your life, or maybe a supportive confidant as you go through it.

AFFIRMATION ASSOCIATED WITH THIS CARD

I will survive this storm and sail on to calmer, smoother waters.

CRYSTAL ALIGNED WITH THIS CARD: BLACK TOURMALINE

Black tourmaline can help you deflect negative energy coming at you back to its source. Traditionally used as a psychic shield by magicians, this crystalline black hole will suck in bad vibes and act as a cloak to stop negative people finding and feasting on your energy. Super-grounding and protective, black tourmaline is useful in any situation where you feel unsafe or untethered.



17 THE STAR
MOLDAVITE

THE STAR

TALISMAN

I will make my heartfelt dream come true.

INTERPRETATION

Walt Disney said, 'If you can dream it, you can do it' and that perfectly captures the vibe of this starry-eyed and magical card. The higher you aim, the better the outcome. Dream big.

The Star is an omen that the Universe is aligning around you so that you can advance further and faster than you ever thought possible ... but you must have a destination in mind or else the pathway cannot take form. Clarify and visualize your most heartfelt dream. See it, feel it, hear it, taste it!

As an attitude or approach, the Star is telling you to make your goals and ambitions bigger, bolder and brighter, to have total faith in yourself and start making overt steps towards your dreams. Make your wildest fantasies into amazing realities. Live a life you dream of living.

On the shadow side, the Star could represent a delusion or illusion. It could allude to something that has not panned out as you hoped, but you won't face or admit it.

CORRESPONDENCES

The Star is linked to Aquarius (late January

through February), an Air sign. Its planet is Uranus, which is not aligned to any particular day.

PEOPLE REPRESENTED

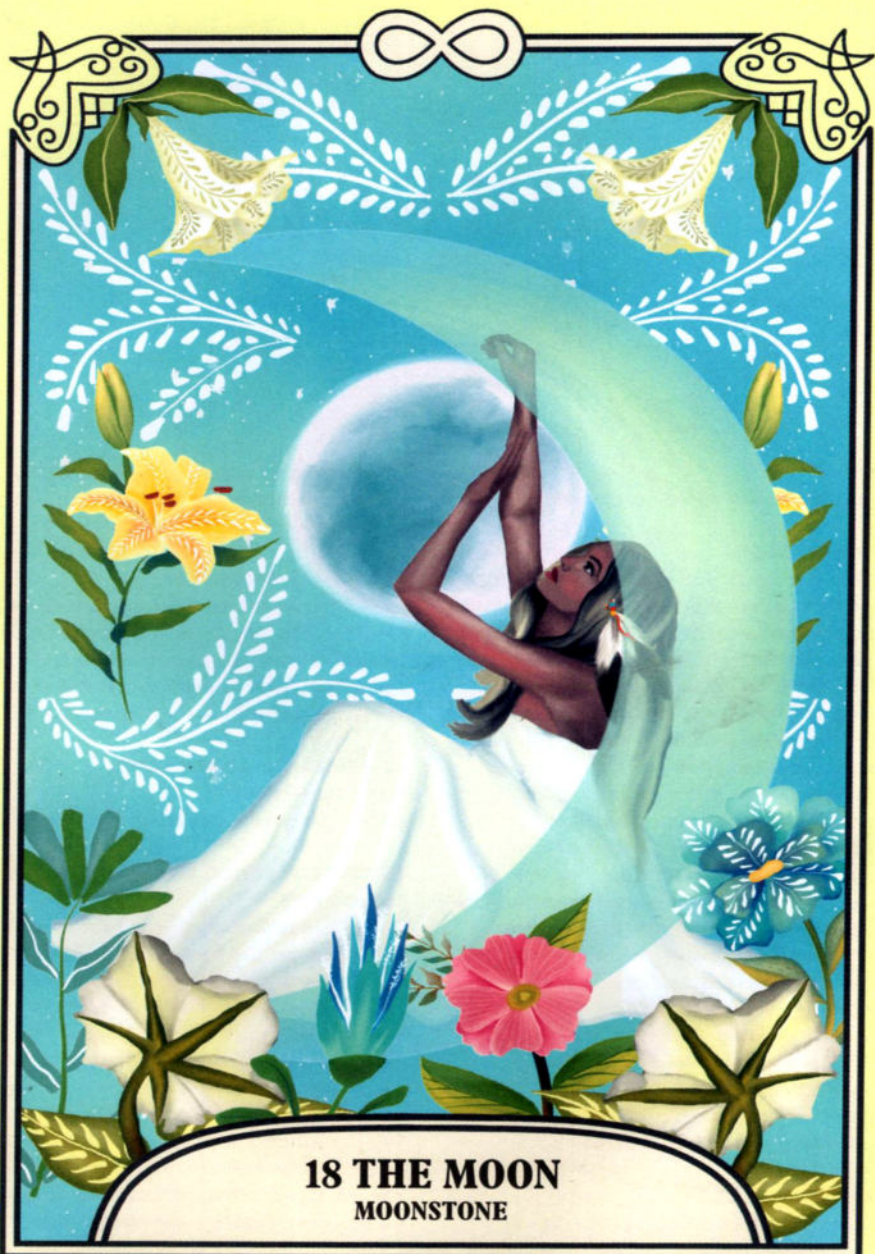
If the Star represents a person in your life, then they're likely to be an Aquarius and are almost certainly a positive influence in your world. They perhaps act as a catalyst for you to dream a dream. Let someone else lift you up.

AFFIRMATION ASSOCIATED WITH THIS CARD

If I can dream it, I can do it.

CRYSTAL ALIGNED WITH THIS CARD: MOLDAVITE

Fitting for the Star card, moldavite is out-of-this-world magic! Formed when a meteorite hit the Earth millions of years ago, this crystal has high-frequency, intense energy that you might even be able to physically feel. Associated with astral travel, psychic awakening and cosmic magic, moldavite is said to help you see into the future to view the effect of your actions. This crystal can even enhance the effect of other crystals but you may find you need to use it in conjunction with a grounding stone so you don't feel too spaced out afterwards.



18 THE MOON
MOONSTONE

THE MOON

TALISMAN

I will discover the truth behind this secret, mystery or illusion.

INTERPRETATION

Now is not a time to act, but to seek more understanding. This card represents secrets, illusions, mysteries – important ones that we need to find answers to before making any bold decisions, changes or moves.

Sometimes, the Moon appears when we're projecting our own fears out onto the world or another person, taking past experiences or traumas and using them as predictions of what's to come.

As an attitude or approach, the Moon tells you to press the pause button while you do more research, questioning, reflecting and analysing. You need to probe deeper to pinpoint what is tangible and real, and what is a figment of your own imagination.

On the shadow side, the Moon points to secrets, deceptions, denials and excuses that thwart our progress and seek to keep us in a particular position (usually for someone else's gain).

CORRESPONDENCES

The Moon is linked to the Water sign Cancer (late June through July) and rules over Mondays.

PEOPLE REPRESENTED

If the Moon represents a person in your reading, they could be a Cancerian. They are perhaps the trigger or connection to a secret or hidden anxiety that is causing confusion or worry in your world. Watch this person and listen to them carefully, then follow your instincts about them.

AFFIRMATION ASSOCIATED WITH THIS CARD

I ask, and am ready, for the whole truth.

CRYSTAL ALIGNED WITH THIS CARD: MOONSTONE

What better match for the Moon than the stone named after it! Moonstone is a silvery-white crystal of secrets, mystery and Moon magic that sometimes has flashes of blue or rainbows of colour across its surface, though it can also be found in peachy-orange colours and shades of grey. This magical stone can help bring shadows into the light, revealing hidden truths and making the unconscious conscious. A crystal of new beginnings and intuition, moonstone balances emotions, calms irrational energy and soothes anxiety and stress. It is also said to protect those who travel at night.



19 THE SUN
CITRINE

THE SUN

TALISMAN

I am creating the best time of my life.

INTERPRETATION

Success, joy, strength, prosperity and fulfilment are all predicted by this happy and positive card. It's time to shine, to bring your talents and strengths front and centre, and let the world know what you can do. You will be rewarded. This is a time to be confident, to act more boldly than you feel, to pursue your dreams proactively. It opens a portal to a new lifestyle - run towards it.

On a literal note, this card can also indicate travel overseas, maybe to sunny places, and that a new location is the right move for your future happiness.

As an attitude or approach, the Sun indicates you need to display total faith, self-assuredness and courage. Be forthright, confident and positive in all your dealings. Look for win:win outcomes.

On the shadow side (albeit the Sun doesn't really have one), it may point to naivety or over-confidence.

CORRESPONDENCES

The Sun is linked to the Fire sign Leo (late July

through August) and the Sun is also linked to Sundays.

PEOPLE REPRESENTED

If the Sun represents a person in your reading, then they could be a Leo, and are probably a happy, larger-than-life, go-getting kind of presence in your world.

AFFIRMATION ASSOCIATED WITH THIS CARD

I deserve everything I desire.

CRYSTAL ALIGNED WITH THIS CARD: CITRINE

Often called the 'success stone', citrine can help focus your energy towards achieving your dreams. With its soft yellow or fiery orange hues, like drops of sunshine, you can't help but feel citrine's vitality and positivity. As well as attracting wealth and abundance, citrine can boost your confidence, creativity and self-esteem. Said to bring the energy of the Sun, citrine absorbs negativity and turns it into happy, positive, creative energy. Citrine also revitalizes the mind, just like a holiday can, so use citrine to bring a dose of mental sunshine even in wintery weather.



20 JUDGEMENT
AMAZONITE

JUDGEMENT

TALISMAN

I want to find my authentic niche in this world.

INTERPRETATION

Judgement is the tarot's wake-up call, and a nudge that we're so often old too soon and smart too late, so take this life lesson, adapt, do something with it, and start again – older, wiser and more appreciative of what's to come. You're getting a second chance, and you now have wisdom and experience to draw on.

As an attitude or approach, Judgement tells you to be yourself (everyone else is already taken). Accept yourself and work from there. Live a life suited to your strengths. There is a niche for you. Don't suppress, gloss over or deny things in your life that need to be changed or left behind. This is a turning point, driven by authenticity.

On the shadow side, Judgement can speak to the habit of judging others harshly, and projecting our own flaws or failings onto those we see them mirrored in.

CORRESPONDENCES

Judgement is linked to Pluto, which rules over the Water sign Scorpio (late October through November). Pluto is also the god of the underworld, so your wake-up call may be

linked to something or someone you've lost. Pluto is not associated with any particular day.

PEOPLE REPRESENTED

If Judgement represents a person in your reading, then they might be a Scorpio. Maybe they are the relationship or representative of the situation you're leaving behind; maybe they are your future.

AFFIRMATION ASSOCIATED WITH THIS CARD

I rise to the challenge of a new beginning.

CRYSTAL ALIGNED WITH THIS CARD: AMAZONITE

Amazonite inspires you to dig deep and find the truth within inspiring self-expression, increased self-esteem and setting strong and clear boundaries. Amazonite can help you embrace any adventure that awaits you with bravery and calm. Amazonite reminds you that everything you have done in your life up to this point has made you who you are, as you move forward wiser and stronger. Just like the Amazon river after which it was named, amazonite encourages you to flow forth with strength and power.



21 THE WORLD
TURQUOISE

THE WORLD

TALISMAN

I want to create my next ambition.

INTERPRETATION

The final card of the major arcana and the end of the cosmic journey which began with the Fool, this card says that you have achieved what you set out to do (no doubt with changes along the way) and it's time to celebrate and savour this pinnacle.

Fulfilment and completion deserve recognition, but they are also the signal for a new beginning. What has been finished must now be replaced. You must appreciate, reflect upon and celebrate the story so far, but also ready yourself for a new chapter. What next?

The World can also indicate literal travel and global movement, aspirations or new horizons.

As an attitude or approach, the World is asking you to recognize seasons in your life and be fluid and flexible as things ebb and flow, as relationships and roles develop and fade. It's all natural and inevitable, nothing remains as it is forever, everything changes. So, too, must you.

On the shadow side, the World could speak of greed or over-ambition, perhaps the urge to step over others to achieve what you believe is owed to you.

CORRESPONDENCES

The World is linked to Saturn, which rules over Earth sign Capricorn (late December through January) and this planet also rules over Saturdays.

PEOPLE REPRESENTED

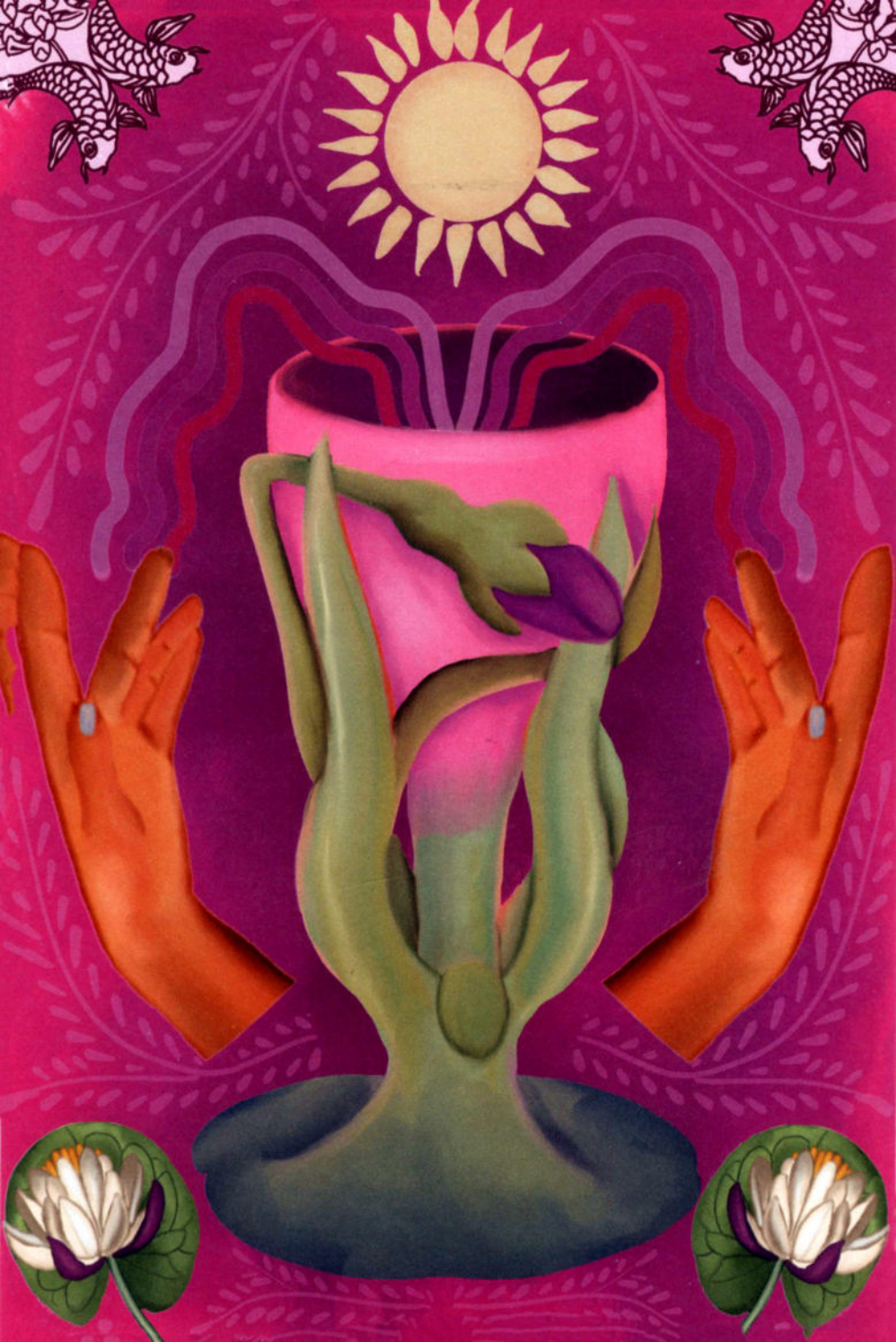
If the World represents a person in your reading, then they might be a Capricorn. It's possible this person is one of the most significant people you will meet in your lifetime.

AFFIRMATION ASSOCIATED WITH THIS CARD

I will now do the thing I think I cannot do.

CRYSTAL ALIGNED WITH THIS CARD: TURQUOISE

Turquoise is a stone of strength, protection and friendship. Prized as a sacred stone in many ancient cultures, turquoise embodies the wisdom of Mother Earth and we hold it to us as a connection to her. Turquoise can help you feel the connection to your ancestors and their wisdom, as well as the wisdom of nature and its cycles and seasons.



THE MINOR ARCANA

There are 56 minor arcana cards in a tarot deck, divided into four suits (Wands, Cups, Swords and Coins or Pentacles). Each suit, a bit like a normal card deck, has cards numbered from 1-10, plus four court cards (a Page, Knight, Queen and King).

The minor arcana are concerned with the everyday events, opportunities and challenges of life which are in our own control and circle of influence. Minor arcana cards are more action-oriented, urging us to do certain things.

The four suits govern different emotions and aspects of your life.

- ★ **WANDS** are about energy and inspiration; your roles, projects, lifestyle, travel ideals and creative endeavours; the beneficiaries of your talents and energy.
- ★ **SWORDS** are about your intellect; mental concepts, thoughts, beliefs or attitudes towards life; they often depict situations where we're in conflict mentally with others or with ourselves.

- ★ **CUPS** are about your feelings, emotions, psychology, and therefore relationships (the 'lover' cards).
- ★ **COINS** are about your material world: money, home, career, health (the 'money' cards).

Each of these cards has an associated, talisman, interpretation, correspondences, person, affirmation and crystal so that you can extract the full range of possible meanings and use the card in your intention and manifesting rituals.

As with the major arcana, each card has an interpretation of its shadow-side to reveal the card's negative energies. If you pull the card upside-down or this answer feels more relevant to the question you asked, then use this.

ACE OF COINS

TALISMAN

I am investing in building my future security and wealth.

INTERPRETATION

Aces mean new beginnings and this one relates to the material world – health, money, career, home, assets and possessions. This new beginning is a steady evolution rather than an overnight sensation. You are planning, researching and investing in something that will yield rewards down the line.

As an attitude or approach, the Ace of Coins tells you that small steps will add up to a big leap over time.

On the shadow side, the Ace of Coins might reveal a tendency to hold back, stall your own progress, a kind of 'better the Devil you know' attitude to not seeking improvement or change.

CORRESPONDENCES

Coins have the slowest energy of the four suits and represent years, therefore the Ace of Coins could indicate a one-year time span. Coins also represent the Earth element, which points to the months of January, May and September.



PEOPLE REPRESENTED

If the Ace of Coins represents a person in your reading, they are possibly an Earth sign such as Virgo, Taurus or Capricorn. They might be a partner in your new endeavour.

AFFIRMATION ASSOCIATED WITH THIS CARD

Little by little, step by step, I can go further than I think is possible.

CRYSTAL ALIGNED WITH THIS CARD: MOSS AGATE

Moss agate is the stone of growth and new possibilities bursting forth – so much so that it is known as the 'midwives' stone' and is said to aid births. Some even say that placing one in the soil of a house plant will help the plant grow strong and healthy. Just like a long walk in a deep woodland, moss agate's earthy, optimistic energy reduces stress, balances the emotions and inspires new growth. If you're feeling stuck in a rut, depressed or lethargic, this stone will help to brighten your mood and bring in a new beginning or a bud of new life to your spirit.

TWO OF COINS

TALISMAN

I want it all!

INTERPRETATION

The Two of Coins represents variety, being busy, multiple priorities and commitments – albeit *all* of them are things you want to do and all these priorities are genuinely positive additions to your world. Busy is the new happy!

As an attitude or approach, the Two of Coins tells you to get energized and active, to expand your circle, broaden your horizons, take on more, and revel in being valued and needed.

On the shadow side, the Two of Coins can reveal a tendency to be addicted to being busy, or to hide from important things by inventing unimportant things to do instead.

CORRESPONDENCES

Coins have the slowest energy of the four suits and represent years, therefore the Two of Coins could indicate a two-year time span. Coins also represent the Earth element, which points to the months of January, May and September.



PEOPLE REPRESENTED

If the Two of Coins represents a person in your reading, they are possibly an Earth sign such as Virgo, Taurus or Capricorn. They are likely to be a very busy bee indeed. Maybe you're in cahoots together.

AFFIRMATION ASSOCIATED WITH THIS CARD

I believe I can be all that I want to be and achieve all that I want to achieve.

CRYSTAL ALIGNED WITH THIS CARD: BLOODSTONE

Bloodstone is strengthening and grounding, helping you adjust to new or different circumstances by dispelling confusion. This deep green crystal with red splotches (said to represent the blood of Christ on moss) is your ally when chaos abounds. If you have many plates spinning, bloodstone can aid the decision-making process whilst also shielding you from negative outside influence. This stone is also healing and revitalizing, so if you are feeling mentally drained or exhausted from all your commitments, keep a bloodstone with you to keep up your energy levels.

THREE OF COINS

TALISMAN

I wish to receive a promotion, pay rise or a new opportunity to progress.

INTERPRETATION

Raises, expansions, windfalls, promotions, new roles or job offers could be on the cards with the appreciative Three of Coins. Someone with influence is impressed by you and is ready to make you an offer.

Make sure you're showcasing your best self, especially in work, because your talents and strengths are noticeable, relevant and about to be recognized in a rewarding way.

As an attitude or approach, the Three of Coins is a 'best foot forward' nudge. Have confidence in your presence and power, network, lean in and be open to offers and ideas.

On the shadow side, this card can reveal a need for approval and attention that will eventually scupper your ambitions because it looks thirsty and seems totally self-serving.

CORRESPONDENCES

The Three of Coins could indicate a three-year time span. Coins also represent the Earth element, which points to the months of January, May and September.



PEOPLE REPRESENTED

If this card represents a person in your reading, they are possibly an Earth sign such as Virgo, Taurus or Capricorn. They might be a recruiter, boss, mentor or entrepreneur.

AFFIRMATION ASSOCIATED WITH THIS CARD

I am a beacon for opportunity, progression and promotion.

CRYSTAL ALIGNED WITH THIS CARD: CHRYSTOPRASE

If you're looking to manifest change, chrysoprase is the crystal you need. It's a great stone for drawing out unique talents and bringing in positive transformation. If you want a promotion or a change in direction, this fresh green stone will usher in opportunity and radiate out good vibes that will help you get the attention of those you seek to impress. If you have an interview or networking event, chrysoprase can also help you think quickly and speak wisely as well as creating an optimistic and open mind when it comes to new situations or possibilities.

FOUR OF COINS

TALISMAN

I need to get out of this rut – be it unhealthy lifestyle, debt, toxic job or unhappy home.

INTERPRETATION

This blunt card reveals you are getting into, or have become ensnared in, a rut. Stuck in a moment. 'Groundhog Day' limbo. It is high time to push yourself out of this negative spiral.

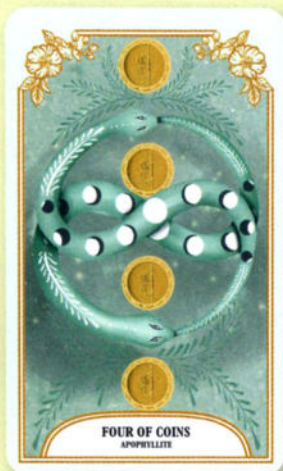
Identify where you experience 'growing pains' in life but are not addressing them or changing anything. This is where the work needs to happen. Banish doubt, fear, defensiveness, excuses and fatigue. Press on and make changes – small at first – to start moving you, body and soul, onwards and upwards.

As an attitude or approach, the Four of Coins tells you to shake it up, change things, release the old, welcome in the new. To get different results, you have to act differently.

On the shadow side, this card warns of stubbornness, defensiveness, excuses, covering up and generally being (almost willingly) stuck in a bad place.

CORRESPONDENCES

The Four of Coins could indicate a four-year time span. Coins also represent the Earth element, which points to the months of January, May and September.



PEOPLE REPRESENTED

If this card represents a person in your reading, they are possibly an Earth sign such as Virgo, Taurus or Capricorn. This person is afraid of change, reluctant to make progress, stuck in a rut. They could also be a root cause of why you are stuck.

AFFIRMATION ASSOCIATED WITH THIS CARD

I am recalibrating, renewing and rebooting my intentions and energy.

CRYSTAL ALIGNED WITH THIS CARD: APOPHYLLITE

This cluster of green, yellow and clear crystals can help you to see your own behaviour patterns clearly and release negative thoughts, rebalance self-perception and address problems caused by your own mind. And after all this self-realization, apophyllite is also a wonderful energy filter, clearing that stagnant energy and filtering it back into positive, fresh vibes making you feel reborn and renewed. Apophyllite is also a great stress-relieving stone and can help you overcome the fear, worry or anxiety that often causes feelings of stuck-ness.

FIVE OF COINS

TALISMAN

I need to overcome this loss and bounce back.

INTERPRETATION

This card acknowledges that you have been through something, but has a hopeful message that the worst *is* over, and you can now choose to look ahead and move on (or wallow in the past).

Self-recriminations, regret, denials, excuses, martyrdom are all possible warning signs when this card appears. Don't ignore the signs of renewal and growth around you. Don't get stuck in this sad place.

As an attitude or approach, you are being asked to overcome a wound from the past and look ahead with optimism. Take a life lesson from your experience, ask for help if you need it, start to make new plans.

On the shadow side, this card warns of being lost in self-pity, regret and grief, picking at a scab so that it won't heal and being your own worst enemy.

CORRESPONDENCES

The Five of Coins could indicate a five-year time span. Coins also represent the Earth element, which points to the months of January, May and September.



PEOPLE REPRESENTED

If this card represents a person in your reading, they are possibly an Earth sign such as Virgo, Taurus or Capricorn. This person may be grieving, stuck in the past, or could perhaps be a negative influence on you right now.

AFFIRMATION ASSOCIATED WITH THIS CARD

My struggles today prepare me for my progress tomorrow.

CRYSTAL ALIGNED WITH THIS CARD: MALACHITE

Known as the 'transformation stone', malachite is a deeply healing stone, helping you to change, move on and grow spiritually. A wonderful crystal for helping to release you from negative patterns, break addictions and heal the scars of traumatic past events or painful emotional wounds, its forgiving energy instills self-worth, willpower and commitment. When you have a broken heart, old emotional baggage that's weighing you down or unprocessed grief, this deep green crystal will work deep in the dusty basement of your psyche, helping you to clear the debris and break through into the light.

SIX OF COINS

TALISMAN

I am going to live a life of good karma.

INTERPRETATION

This is the literal 'good karma card'. When we give our time or energy or resources freely, the Universe takes that energy, transforms it, and returns it to us down the line as a reward. By being good, we become good people and lead good lives. It's not an immediate or tit-for-tat system but an overall shift towards a positive lifestyle.

As an attitude or approach, this card urges you to be kind, supportive, generous and helpful. Be a beacon of good intentions and goodness in your corner of the world.

On the shadow side, the Six of Coins hints at a more tit-for-tat style of behaviour, giving in order to expect a return, and maybe even demanding it.

CORRESPONDENCES

The Six of Coins could indicate a six-year time span. Coins also represent the Earth element, which points to the months of January, May and September.



PEOPLE REPRESENTED

If this card represents a person in your reading, they are possibly an Earth sign such as Virgo, Taurus or Capricorn. This could be a person deserving of your kindness.

AFFIRMATION ASSOCIATED WITH THIS CARD

How others treat me is their karma, how I respond is mine.

CRYSTAL ALIGNED WITH THIS CARD: YELLOW TOPAZ

Topaz teaches you to do the right thing, be generous, kind, and noble and yellow topaz particularly brings the kind of optimism and good faith that you just can't help but pass on. If you want to invite good karma back to you, you first need to pay it forward, and yellow topaz's high vibration will serve to remind you treat others as you yourself would wish to be treated. This vibrant, joyous stone also encourages forgiveness (very useful when your aim is the higher path!) and will in turn attract abundance and success back to you.

SEVEN OF COINS

TALISMAN

I am going to make a big change in my life.

INTERPRETATION

This is a crossroads card, indicating you have reached a point where the (long and winding) road you've travelled so far doesn't look like it's going to stretch much further. You're ready for a new path, maybe an unexpected one. Something has simply run its course. Many people make a big material change at this point: sabbaticals, retraining, career shift, travelling, moving location or home.

This is a significant, long-term and lasting shift in circumstances, triggered by you.

As an attitude or approach, this card asks you to make a truthful assessment of where you are at, what's working and what's not, and how your goals or ambitions are changing. Don't stick to an old plan, make a new one.

On the shadow side, this card can warn of stubbornly sticking to a 'better the devil you know' course of action, even though you have enough evidence to suggest you need to adjust and change your approach or ideals.

CORRESPONDENCES

The Seven of Coins could indicate a seven-year time span. Coins also represent the Earth element, which points to the months



of January, May and September.

PEOPLE REPRESENTED

If this card represents a person in your reading, they are possibly an Earth sign such as Virgo, Taurus or Capricorn. This person could be a wise mentor as you consider, research, and activate change in your life. Ask for their help.

AFFIRMATION ASSOCIATED WITH THIS CARD

I choose to change my life one step at a time, and today I make that step.

CRYSTAL ALIGNED WITH THIS CARD: SULPHUR

Not so much of a stone as a pure element that has a natural crystalline form, sulphur may smell weird but it has powers! Since sulphur was made in volcanoes, it's the perfect kind of crystal for helping you to make an abrupt change. It is a negative-energy-absorbing, distraction-blocking energizer that will transform your outlook and give you a boost of creativity and optimism. If negative thought patterns are keeping you prisoner in your current situation, sulphur can help erupt out of them and inspire a creative new outlook.

EIGHT OF COINS

TALISMAN

I need to push myself harder and further.

INTERPRETATION

You are so close to success and now is not the time to give up, even if you're weary or frustrated. Keep going. The rewards are going to be well worth it, and you'll look back at this phase as a test, and one you're glad you overcame.

As an attitude or approach, you need to dig deep and find the determination to persist with this task / goal / challenge / relationship. Persevere. It's all a learning curve and it's all strengthening you for what lies ahead.

On the shadow side, the Eight of Coins can indicate an all-work-and-no-play attitude that taints life's joys and pleasures. Work hard but play hard too!

CORRESPONDENCES

The Eight of Coins could indicate an eight-year time span. Coins also represent the Earth element, which points to the months of January, May and September.



PEOPLE REPRESENTED

If this card represents a person in your reading, they are possibly an Earth sign such as Virgo, Taurus or Capricorn. This person is serious and hardworking; they are a strong ally for you.

AFFIRMATION ASSOCIATED WITH THIS CARD

My hard work will pay off.

CRYSTAL ALIGNED WITH THIS CARD: ZOISITE

Zoisite helps you to manifest your own path whilst staying focused and grounded – the perfect stone if you need to knuckle down and get working. Zoisite can overcome feelings of lethargy and stimulate creativity, helping you to push beyond fatigue. It can also help you to change destructive behaviour and impulses into more positive actions, so is a great stone to have at your side if you're struggling to revise! Zoisite is also a detoxifying crystal that slowly transmutes bad vibes into good vibes, so if you are feeling doubtful or weary, this crystal can help you to keep on keeping on.

NINE OF COINS

TALISMAN

I am investing in creating a wonderful life for my future self.

INTERPRETATION

The Nine of Coins is about the long game, creating a pressure-tested, long-term plan for your material wealth, security and prosperity. Mortgages, pensions, long-term investments, financial portfolio building, career growth, retraining, sustainable health changes and lifestyle habits are all in focus here. It's doing stuff, over time, that a future you will thank you for.

As an attitude or approach, you should focus on the long-term gains and realities you wish to achieve and live. Look at what can be done in the here and now to build security, success and rewards in the future.

On the shadow side, this card can warn of putting off important actions, waiting for rescue rather than taking control of matters yourself, of not thinking sensibly about your long-term needs and security.

CORRESPONDENCES

The Nine of Coins could indicate a nine-year time span. Coins also represent the Earth element, which points to the months of January, May and September.



PEOPLE REPRESENTED

If this card represents a person in your reading, they are possibly a Virgo as this card is linked to that perceptive, shrewd sign. They are around for the long game, ready to help you get where you want to go and offer useful support along the way.

AFFIRMATION ASSOCIATED WITH THIS CARD

I am designing the lifestyle I can't wait to wake up to.

CRYSTAL ALIGNED WITH THIS CARD: BUDDSTONE

Buddstone, also known as African jade, is a super-grounding and practical stone. It promotes self-sufficiency and self-belief, while helping you deal with everyday practicalities, like admin and sorting out your pension. Buddstone also encourages patience - which if you're making future plans could be useful - and loyalty, helping you to see what really matters to you and making sure your energy is spent wisely in those areas. Use this stone for manifesting a secure future or to ground any long-term plans.

TEN OF COINS

TALISMAN

I want to have money for my future and better financial security.

INTERPRETATION

Success, riches, abundance, wealth, security, joy and prosperity! This a wonderful card representing a phase where you're reaping the rewards of the good seeds you've sown.

This wealth isn't always entirely financial or material, but having a healthy bank balance certainly helps. You also feel strong in your relationships, sense of identity and personality, and that you can handle whatever life brings. This is a legacy moment, when perhaps you think about how you can lift others up too.

As an attitude or approach, this card is about being led by your very best hopes, not fears, and spreading the wealth, happiness, warmth and prosperity around.

On the shadow side, this card can indicate a selfishness and closedness around having it all and keeping it all to yourself, or perhaps finding happiness in the downfall of others.

CORRESPONDENCES

The Ten of Coins could indicate a ten-year time span. Coins also represent the Earth element, which points to the months of January, May and September.



PEOPLE REPRESENTED

If this card represents a person in your reading, they are possibly an Earth sign such as Virgo, Taurus or Capricorn. This person is a potential life partner – whether that is as a part of your family, work world or a romantic bond.

AFFIRMATION ASSOCIATED WITH THIS CARD

I am going to live happily ever after.
I am writing my own fairy tale.

CRYSTAL ALIGNED WITH THIS CARD: EMERALD

A magnet for good fortune, luck and abundance, emerald inspires positive action by eliminating negativity and raising consciousness. Said to promote loyalty, domestic bliss and encourage a happy home, emerald may not only bring material wealth but also bring riches in your relationships and emotional life. In fact, it was believed by some that an emerald would change colour if someone was being unfaithful to you! Known as the 'stone of successful love', emerald is a wise, patient gemstone that is perfect for manifesting balanced relationships and healthy, loving environments.

PAGE OF COINS

TALISMAN

I am learning skills and gaining knowledge that will help me to be successful.

INTERPRETATION

This is the student card of the tarot, representing a time to get your head down and study, research, read up, acquire a new skill and hone your current ones. All this endeavour is worthwhile and is perhaps leading you towards a new career pathway or personal goal. This isn't just education for education's sake but a conscious learning curve leading somewhere advantageous.

As an attitude or approach, this Page is earnest, serious, dedicated, open-minded and eager to learn: a natural-born student of life.

On the shadow side, this card can indicate a sense of imposter syndrome lurking behind your behaviour: thinking that you're not good, successful, fast or showy enough to deserve the position you're in.

CORRESPONDENCES

Coins have the slowest energy of the four suits and represent years, so events could unfold in years rather than months. Coins also represent the Earth element, which points to the months of January, May and September.



PEOPLE REPRESENTED

If the Page of Coins represents a person in your reading, they are possibly an Earth sign such as Virgo, Taurus or Capricorn. They could be younger, more junior or less mature than you in some way, perhaps an apprentice or younger relative.

AFFIRMATION ASSOCIATED WITH THIS CARD

I am excited to learn something new today.

CRYSTAL ALIGNED WITH THIS CARD: FLUORITE

If there's one crystal that can help you channel that nose-to-the-books, hard-working mindset, fluorite is it. Fluorite inspires an organized mind, focus and mental clarity and works super-well as a learning aid, increasing concentration and helping you to take in information. Green fluorite is especially good at absorbing negative energy and neutralizing or grounding any excess energy, so is perfect for anyone who can't sit still, is easily distracted or who struggles with ADHD. Yellow fluorite helps to focus groups and ensures co-operation whilst enhancing creativity.

KNIGHT OF COINS

TALISMAN

I want to find the right work/life balance for me.

INTERPRETATION

Knights often represent the extremes of their suit, and Coins is about health, money, home, work and assets, therefore it is a nudge that you need to rebalance your attitude or behaviour in one of these areas of life. Typically it's call to action to knuckle down, work hard, persist and build up your security.

As an attitude or approach, the Knight of Coins is dogged, determined, conscientious, defensive and shrewd. No flies on this Knight – he protects what is his.

On the shadow side, the card can point towards workaholicism, over-seriousness or earnestness to the point of distraction, and a tendency to be too defensive and closed-minded.

CORRESPONDENCES

Coins have the slowest energy of the four suits and represent years, so events could unfold in years rather than months. Coins also represent the Earth element, which points to the months of January, May and September.



PEOPLE REPRESENTED

If the Knight of Coins represents a person in your reading, they are possibly an Earth sign such as Virgo, Taurus or Capricorn. They can be a guarded and serious character, focused on their ambitions and on protecting what is theirs.

AFFIRMATION ASSOCIATED WITH THIS CARD

I work hard and play hard.

CRYSTAL ALIGNED WITH THIS CARD: GREEN JASPER

Jasper comes in many varieties and colours, almost too many to mention, but green jasper is just the prescription for the workaholic ways of the Knight of Coins. Green jasper can balance out obsessive tendencies and help you to see where you are spending too much of your time. Jasper is supportive in stressful situations and grounding you whenever you feel scattered or untethered. If, on the other hand, you lack determination and assertiveness, Jasper will impart the courage and commitment you need.

QUEEN OF COINS

TALISMAN

I want to feel like the in-control leader of my family. I want to take care of them and myself financially.

INTERPRETATION

The Queen of Coins is both a self-made success story and a kind of Mother Nature energy. She looks after herself, her business, family and other people. She is rich in wealth, health, happiness and having the time and energy to enjoy it all.

Queens are also leaders. They are transitioning into their own power and strength, and learning how to use it for the good of themselves and others.

As an attitude or approach, this Queen tells you to take control of your material world: health, home, money, work and possessions.

On the shadow side, this Queen can be selfish, self-absorbed or even jealous and envious of the success or gains of those around her. Don't make the pursuit of success your master.

CORRESPONDENCES

Events could unfold in years rather than months. Coins also represent the Earth



element, which points to the months of January, May and September.

PEOPLE REPRESENTED

If this card represents a person in your reading, they are possibly an Earth sign such as Virgo, Taurus or Capricorn. This woman is warm, pragmatic, strong and wise; a mentor, role model, leader or wise friend.

AFFIRMATION ASSOCIATED WITH THIS CARD

I am brimming with ambition and worthy of success.

CRYSTAL ALIGNED WITH THIS CARD: GOLD

The Queen of Coins has everything under control, she is powerful and practical, just like gold. Though gold is a metal and not a crystal (though it is mined from deep in the Earth) it is *all about* manifestation! A symbol of wealth and prosperity ever since humans first discovered it, gold holds a mesmerizing energy that immediately casts you under its spell, making you feel empowered and bold. Gold's warm radiance, both soft and solid at the same time, gives off good vibes that attract abundance in the material and metaphysical world.

KING OF COINS



TALISMAN

I am taking ownership for making a success of my life on all levels.

INTERPRETATION

The King of Coins knows how to survive and thrive in a tough world. He can handle adversity, recover and overcome loss or setbacks. Because he has proven this to himself, through hardship and experience, he is resolutely confident and stoic. This King can represent entrepreneurs, self-starters, leaders and the self-employed.

At his best, the King of Coins works and plays hard. What is the point of success if not to enjoy it and what it can provide?

As an attitude or approach, the King wants you to take responsibility for your money, career, assets and health. Be the boss of your life. No one is going to make your life happen for you, or help you make a success of it. It's on YOU.

On the shadow side, the reversed King can be rigid, dogmatic and set on their way of doing things or of seeing the world, blinkered to other ideas and mindsets.

CORRESPONDENCES

Events could unfold in years rather than

months. Coins also represent the Earth element, which points to the months of January, May and September.

PEOPLE REPRESENTED

If this card represents a person in your reading, they are possibly a Taurean, as that sign is linked to this card. This person is stoic, wise, successful, worldly and a source of strength and inspiration for you.

AFFIRMATION ASSOCIATED WITH THIS CARD

I have the power to create positive change all around me.

CRYSTAL ALIGNED WITH THIS CARD: PERIDOT

Peridot has self-esteem in abundance. Peridot drives away darkness and helps you to overcome fear or depression, let go of negative patterns and keep strong boundaries, especially from those who have feeling of jealousy or resentment towards you. Since it is known as a lucky stone that attracts abundance to you, this sunny, positive crystal is a reminder that you can handle anything and encourages you to celebrate your wins when they happen.

ACE OF SWORDS

TALISMAN

I want to know and share the truth.

INTERPRETATION

Aces mean new beginnings and this one is ignited by a revelation, a truth, a life-changing dialogue that lets you express yourself and hear the true voice of others.

The Ace of Swords brings clarity and focus to any situation you're involved in, allowing you to see things as they truly are and being able to deal with them on that level.

As an attitude or approach, the Ace of Swords nudges you towards having a heart-to-heart conversation and not shying away from difficult truths.

On the shadow side, the Ace of Swords brings confusion, illusion, doubt and chaos. You may feel muddled and unsure as to what's going on and what you should do.

CORRESPONDENCES

The Ace of Swords could indicate a one-month time span. Swords also represent the Air element, which points to the months of February, June and October.



PEOPLE REPRESENTED

If this card represents a person in your reading, they are possibly an Air sign such as Gemini, Libra or Aquarius (because Swords represents the Air element). They might be someone you need to have a difficult but necessary conversation with.

AFFIRMATION ASSOCIATED WITH THIS CARD

Today I am an active and compassionate truth seeker.

CRYSTAL ALIGNED WITH THIS CARD: TIGER'S EYE

Known as the all-seeing and all-knowing, tiger's eye can clarify the reason for a situation, perhaps revealing hidden truths. Said to sharpen the focus of your inner eye and help you see things more clearly, if you have a decision or judgement to make, tiger's eye will guide you to see things as they are and ensure you are not tricked by illusions. Just like the Ace of Swords, tiger's eye will cut through the BS and guide you to the truth. Tiger's eye also attracts luck and prosperity, so it makes a great talisman for new businesses or ventures.

TWO OF SWORDS



TALISMAN

I am making a tough decision.

INTERPRETATION

This card is all about facing, and making, an overdue and difficult decision. The way you've responded to this crossroads so far may not have been positive (avoidance, denial, anger, sabotage) but now it's time to face into the good, bad and ugly factors of this situation and do what's best right now.

As an attitude or approach, the Two of Swords tells you it's high time to make up your mind. Favour logic and rational thought over emotion and passion.

On the shadow side, this card could indicate you've reached a stalemate, a deadlock, a blockage that is going to be hard to dislodge, dismantle and overcome.

CORRESPONDENCES

Two of Swords could indicate a two-month time span. Swords also represent the Air element, which points to the months of February, June and October.

PEOPLE REPRESENTED

If this card represents a person in your reading, they are possibly an Air sign such as Gemini, Libra or Aquarius (because Swords represents the Air element). They could play an important part in the decision you're facing.

AFFIRMATION ASSOCIATED WITH THIS CARD

I trust my wisdom and courage to help me make the right decision.

CRYSTAL ALIGNED WITH THIS CARD: OBSIDIAN

When faced with a tough decision, you need obsidian in your armoury. This glossy black stone made from molten lava that cooled quickly is often used for scrying or crystal gazing because of its powerful divination abilities. Obsidian can help you see clearly and make decisions by connecting you with the realm of knowing that we all have within ourselves. Use obsidian as a talisman whenever you need to tap into your intuition or sixth sense and you will find you instinctively know what to do. Like many black stones, obsidian is also deeply protective and deflective of negative energy.

THREE OF SWORDS

TALISMAN

I am removing myself from toxicity.

INTERPRETATION

Gaslighting, lying, bullying, break-ups, cheating, sabotage, conflict, backstabbing, betrayal and cruelty are all possible when this card arrives. It's a tough card about the horrible things that people can do to each other and the fact that we each have to protect ourselves in life.

This card urges you to take action. Recognize what is happening, believe that you do NOT deserve this, and take immediate and positive steps to stop it continuing. Be your own BFF right now.

As an attitude or approach, the Three of Swords tells you to surgically remove this source of pain from your life.

On the shadow side, this card hints you're in the thick of healing and overcoming a relationship blow – be it an ending or a wounding. Take your time. Be kind to yourself. Don't go back to whatever it was.

CORRESPONDENCES

The Three of Swords could indicate a three-month time span. Swords also represent the Air element, which points to the months of February, June and October.



PEOPLE REPRESENTED

If this card represents a person in your reading, they are possibly an Air sign such as Gemini, Libra or Aquarius (because Swords represents the Air element). They might be a person who has betrayed, undermined or hurt you.

AFFIRMATION ASSOCIATED WITH THIS CARD

I let go of everything that is fading, false and negative.

CRYSTAL ALIGNED WITH THIS CARD: SHUNGITE

Shungite is a master purifier, so if your energy, surroundings or attitude needs a major cleanse, or if you need ridding of some bad vibes, this is the crystal you should procure for your arsenal. Pure, natural shungite has been used in Russia for many years as a water purifier, so strong are its cleansing capabilities (don't try this at home as not all shungite on the market is pure and it may be toxic). If you find your mojo is being drained by something, or someone, let shungite detoxify and protect you from those energy vampires.

FOUR OF SWORDS

TALISMAN

I wish to restore my energy and vitality.

INTERPRETATION

This card is a little red flag, hinting that you might be close to burnout and are certainly feeling fatigued or drained. It's time to retreat / withdraw / rest / put down your tools.

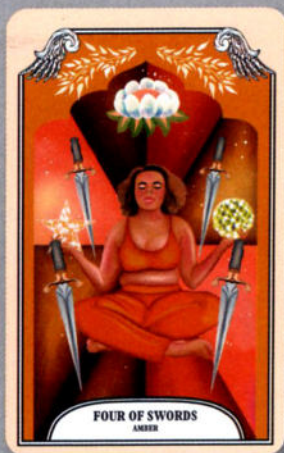
Even a mental vacation from whatever has been taxing you would be welcome. You can't pour from an empty jug, it's time to restore your energy levels.

As an attitude or approach, the Four of Swords pretty much advises you to do nothing, to retreat, to let whatever is happening happen (without your input). Withdraw and rest.

On the shadow side, this card can point to over-stimulation, restlessness, a hollow kind of energy that drives you on even though you know you should stop.

CORRESPONDENCES

The Four of Swords could indicate a four-month time span. Swords also represent the Air element, which points to the months of February, June and October.



PEOPLE REPRESENTED

If this card represents a person in your reading, they are possibly an Air sign such as Gemini, Libra or Aquarius (because Swords represents the Air element). They can help you recover your energy if you heed their advice.

AFFIRMATION ASSOCIATED WITH THIS CARD

When I do less, I make space for what matters most.

CRYSTAL ALIGNED WITH THIS CARD: AMBER

Not technically a crystal, rather ancient pine tree resin that has been sea-smoothed by rushing tides for millions of years, amber is a master healer. A magical, wise treasure of the Earth and the sea, amber brings warm, gentle vitality to the immune system and lends its bright, sunny energy to the mind, lifting depression and promoting a positive mental attitude. When you feel that you need the kind of mind-quietening serenity that only a silent forest can provide, let amber be a talisman of that healing woodland magic and refill your cup with its honey-like glow.

FIVE OF SWORDS

TALISMAN

I am working to resolve a conflict.

INTERPRETATION

Conflict is inevitable in life. We all get embroiled in arguments and tension. The Five of Swords asks you to take the high road, pause and consider the consequences, exercise damage limitation, work towards a resolution instead of making things worse.

It helps you to be objective and to see the situation as a game so that you can take strategic action dispassionately and execute your decisions with a clear head. You can get through this.

As an attitude or approach, the Five of Swords tells you to focus on getting through the conflict as quickly and as unscathed as possible. Don't make things worse.

On the shadow side, this card reveals an urge to bury your head in the sand or run away from this conflict, a desire to let it all evaporate and disappear.

CORRESPONDENCES

The Five of Swords could indicate a five-month time span. Swords also represent the Air element, which points to the months of February, June and October.



PEOPLE REPRESENTED

If this card represents a person in your reading, they are possibly an Air sign such as Gemini, Libra or Aquarius (because Swords represents the Air element). They might be someone you are in conflict with.

AFFIRMATION ASSOCIATED WITH THIS CARD

There's no win or lose; let's find the best way forward.

CRYSTAL ALIGNED WITH THIS CARD: SMOKY QUARTZ

Smoky quartz is highly purifying and is one of the best anti-stress stones there is. It helps you let go of that which does not serve you – including grief, fear and resentment – enabling you to rise above conflict and not get embroiled in it. And because smoky quartz turns negative energy into positive, working deep in the psyche and grounding negative energy back into the Earth, it's a great crystal to have in an argument or to help clear the air after one. Use smoky quartz to connect yourself back to the Earth and back to your core.

SIX OF SWORDS

TALISMAN

I am making a leap and moving on.

INTERPRETATION

You are good to go and now is the time to make that move. This card is a big signal to take the chance and leap, depart, move on, exit or leave it all behind.

Journeys, changes of role or home and location shifts are all possible, and all will be well. It's the right time to make this move.

As an attitude or approach, the Six of Swords tells you that you're ready to make this change, leap or departure, and to have hope and optimism. It will be okay.

On the shadow side, this card speaks of unfinished business or baggage which is preventing you from moving forwards. It needs sorting out.

CORRESPONDENCES

The Six of Swords could indicate a six-month time span. Swords also represent the Air element, which points to the months of February, June and October.



PEOPLE REPRESENTED

If this card represents a person in your reading, they are possibly an Air sign such as Gemini, Libra or Aquarius (because Swords represents the Air element). They might be someone you're ready to let go of or someone who is moving on themselves.

AFFIRMATION ASSOCIATED WITH THIS CARD

I am at peace and ready to move on.

CRYSTAL ALIGNED WITH THIS CARD: ARAGONITE

This rusty-orange and white coloured, spiky crystal cluster is a grounding, stress-busting, anxiety-slaking ally, especially when those uncomfortable feelings are caused by change or the fear of it. Aragonite will not only help alleviate anxiety but help you to embrace the unknown with hope and optimism. If you need to take a leap of faith, this stone is your companion and protector as you move forward. Use aragonite as a talisman when you need to take a forward leap but don't quite have the courage to do it – aragonite will hold your hand.

SEVEN OF SWORDS

TALISMAN

I am protecting myself from negative influences.

INTERPRETATION

Play safe, be prudent, cautious and trust no one except yourself right now.

Stick to the straight and narrow, don't succumb to temptations, don't indulge in bad behaviour, avoid short cuts and don't permit yourself exposure to people you don't trust 100%. Not everyone is as pleasing as they seem; some people are shady and rotten underneath. Be wary.

As an attitude or approach, the Seven of Swords tells you to shut up shop, batten down the hatches, protect yourself and your space.

On the shadow side, this card hints that you yourself may be the holder of the dark secret or the unwholesome intention. Do some shadow work and work through your feelings.

CORRESPONDENCES

The Seven of Swords could indicate a seven-month time span. Swords also represent the Air element, which points to the months of February, June and October.



PEOPLE REPRESENTED

If this card represents a person in your reading, they are possibly an Air sign such as Gemini, Libra or Aquarius (because Swords represents the Air element). This person may not have your best interests at heart; be wary.

AFFIRMATION ASSOCIATED WITH THIS CARD

I am safe because I am divinely protected and cared for.

CRYSTAL ALIGNED WITH THIS CARD: SILVER

You've heard of silver bullets killing werewolves, right? And you've probably even seen silver on plasters. Silver is a magical metal (not a crystal but mined from deep in the Earth all the same) that brings both protection and healing. Silver is strongly connected with the feminine powers of the Moon (a crescent Moon is the alchemical symbol for silver), enhancing intuition and heightening emotions. If you wear lots of silver jewellery you may even have felt its protective powers as its heavenly energy makes you feel as though you're wrapped in a safe blanket of divine protection.

EIGHT OF SWORDS

TALISMAN

I am identifying and removing my self-limiting beliefs.

INTERPRETATION

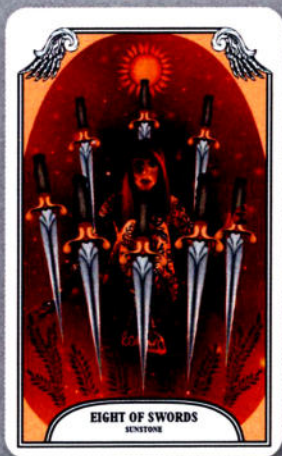
We all sometimes find ourselves in a self-imposed mental prison, trapped by our own negative, self-limiting beliefs. It's actually an enlightening relief to realize we're the orchestrators of our own inability to move because that means we can unravel those inner anxieties and head on out of it.

As an attitude or approach, the Eight of Swords tells you to stop projecting your inner fears onto others or external situations. Look within to find the barrier and remove it.

On the shadow side, this card reinforces the fact that you're plagued by self-limiting beliefs that are thwarting your progress. You must work on this.

CORRESPONDENCES

The Eight of Swords could indicate an eight-month time span. Swords also represent the Air element, which points to the months of February, June and October.



PEOPLE REPRESENTED

If this card represents a person in your reading, they are possibly an Air sign such as Gemini, Libra or Aquarius (because Swords represents the Air element). They might be an ally in regaining your self-belief, or possibly a drain upon it.

AFFIRMATION ASSOCIATED WITH THIS CARD

I know my strengths. I am insulated against self-doubt. I choose to believe in myself, even during challenging times.

CRYSTAL ALIGNED WITH THIS CARD: SUNSTONE

It's easy to see how this stone got its name, like shimmering sunlight on honey. Sunstone is a force of positivity and optimism. If you need a dose of confidence or a bright ray of sparkly self-belief, then put this on your window sill, in sunlight, for half an hour and then hold it tight and let it fill you with faith and hope. Sunstone is also a great crystal for manifesting, so when you are plagued with self-doubt or feel like shying away from the world, use a sunstone to conjure yourself self-belief and bravery.

NINE OF SWORDS

TALISMAN

I am facing my deepest and most secret fears.

INTERPRETATION

Secret fears get bigger and uglier inside, growing out of proportion and therefore becoming almost impossible to tackle. You feel overwhelmed and terrified. The Nine of Swords urges you to stop torturing yourself and seek help, be that professional or just talking to a friend, or even journaling. The key thing is to express these thoughts – get them OUT.

As an attitude or approach, this card asks you to express, share and address your secret fears and anxieties; get them out into the cold light of day.

On the shadow side, the Nine of Swords represents negative, downward spirals of overthinking and catastrophising. If you have felt this way for a while, seek help. You don't have to, nor should you, feel like this.

CORRESPONDENCES

The Nine of Swords could indicate a nine-month time span. Swords also represent the Air element, which points to the months of February, June and October.



PEOPLE REPRESENTED

If this card represents a person in your reading, they are possibly an Air sign such as Gemini, Libra or Aquarius (because Swords represents the Air element). Review how this person makes you feel. Are they a positive or negative influence? Decide, then act accordingly.

AFFIRMATION ASSOCIATED WITH THIS CARD

I'm going to focus on things I love to get me through this. I will be okay.

CRYSTAL ALIGNED WITH THIS CARD: BLACK ONYX

Black onyx protects the wearer from negative energy, defends against people who are manipulative, critical or argumentative, and helps to relieve fear. When feelings of overwhelm, worry or fright overcome you, the grounding force of onyx can bring balance and a sense of wellbeing. By centring your energy, onyx can also help you work through and heal old emotional wounds that may be affecting you in the present and therefore help clear the way for you mentally to focus on your future. Onyx can also lend you strength and stamina, both physically and emotionally, when you need it most.

TEN OF SWORDS

TALISMAN

I am severing ties with what's no longer good for me.

INTERPRETATION

The Ten of Swords is a delusion-buster card, stripping back the façades and illusions so that you can see a painful situation for what it is. It is high time to cut your losses, sever the ties that bind, leave, quit, retreat – even escape! This situation is not going to improve or change, except to worsen.

As an attitude or approach, the Ten of Swords urges you to face the truth and remove yourself from the toxicity.

On the shadow side, this card reveals you're trying to resist or overcome this ending or closure because you're not facing up to the reality of the situation.

CORRESPONDENCES

The Ten of Swords could indicate a ten-month time span. Swords also represent the Air element, which points to the months of February, June and October.



PEOPLE REPRESENTED

If this card represents a person in your reading, they are possibly an Air sign such as Gemini, Libra or Aquarius (because Swords represents the Air element). This person could be a difficult presence in your life – someone you need to walk away from.

AFFIRMATION ASSOCIATED WITH THIS CARD

This ending means that something new and better is about to begin.

CRYSTAL ALIGNED WITH THIS CARD: BLACK KYANITE

Black kyanite is the cord cutter. Often it comes in brittle shards that look like a primitive knife, perfect for cutting energetic cords with people or problems you do not want to be tied to. Black kyanite is also grounding, protecting and deflects negative energy away from you. Use black kyanite as a talisman if someone around you is negatively affecting you or draining your energy. You can even swoosh it through the air around you and imagine unseen spiderwebs of attachment falling away from you as you go, cutting the ties that you no longer wish to hold to you.

PAGE OF SWORDS

TALISMAN

I am focusing on manifesting ideas into realities.

INTERPRETATION

This card hints that it's time to marshal your ideas, prioritize them, draw up a plan of attack and focus with intent on what you're doing. No time for distraction, confusion or doubt. Get your head down and get busy doing. Instead of overthinking.

You might feel overwhelmed by what's going on in your head. Try to bring it down to earth, and start taking positive steps. Little by little, you can manifest what you dream about.

As an attitude or approach, the Page of Swords tells you to commit to something, rather than drifting in your imagination. Get working on it.

On the shadow side, this clever Page can be manipulative, deceitful and ruthless with other people. It could also indicate a lack of ideas or solutions.

CORRESPONDENCES

The Page of Swords shows something unfolding within the year. Swords also represent the Air element, which points to the months of February, June and October.



PEOPLE REPRESENTED

If this card represents a person in your reading, they are possibly an Air sign such as Gemini, Libra or Aquarius (because Swords represents the Air element). This person is hard to get a handle on; they can blow hot and cold.

AFFIRMATION ASSOCIATED WITH THIS CARD

My focus is sharp, clear and conscious.
I have the focus needed to get things done.

CRYSTAL ALIGNED WITH THIS CARD: DESERT ROSE

So named because it is formed of desert sand that has crystallized into a pattern that resembles a many-petaled flower, desert rose can aid focus and bring clarity. If you have a decision to make or are feeling overwhelmed, confused or over-stimulated, desert rose can help you feel grounded and balanced so that you can face whatever you need to. If, like the Page of Swords, you need to find focus and commitment, desert rose can bring the calmness of mind you need to concentrate, making it perfect for work desks and anywhere you need to maintain your attention and avoid distraction.

KNIGHT OF SWORDS

TALISMAN

I am a force to be reckoned with.

INTERPRETATION

This Knight is forceful and passionate and is striving towards an ambitious goal. This card is like a warrior vibe, bringing purpose, strength and bold energy to anything at hand. Sometimes, like any double-edged sword, the ambition can burn too brightly and this card can warn of domineering, overpowering people or situations.

As an attitude or approach, this Knight tells you to armour up for a battle ahead, bring a steely-eyed and sharp-minded approach to this skirmish. Be brave. Focus on what you want and need.

On the shadow side, this Knight can be secretive and sly, intent on getting his own way whatever the cost. Be wary of falling under the controlling spell of someone like this. Reassess your relationship dynamics.

CORRESPONDENCES

The Knight of Swords shows something unfolding within the year. Swords also represent the Air element, which points to the months of February, June and October.



PEOPLE REPRESENTED

If this card represents a person in your reading, they are possibly an Air sign such as Gemini, Libra or Aquarius (because Swords represents the Air element). This person is a bold, ruthless, and ambitious go-getter. But are they on your side?

AFFIRMATION ASSOCIATED WITH THIS CARD

I am inspired to fight for what I want and take action towards my goals today.

CRYSTAL ALIGNED WITH THIS CARD: COPPER

When you need armour, metal up! Copper is super-conductive, which means it allows energy to flow through it easily and so is an element of action and amplification – perfect for manifestation. This flowing of energy is useful for grounding any unwanted energy back to the Earth, another job that copper does well. Often added to other metals, like silver, to make them stronger, copper is tough yet malleable enough to allow you to work with it easily. Copper reminds you that you can be resilient and strong, but it is also important to be flexible, as being too tough can make you brittle.

QUEEN OF SWORDS

TALISMAN

I am seeing things as they are and how they can be better.

INTERPRETATION

The Queen of Swords is either a mature, no-nonsense female in your life or a shrewd, knowing, focused and ambitious persona you need to adopt.

Cut to the heart of an issue, even if it hurts, and see it as it really is, then base your response on that truth. Mental clarity, knowledge and focus are the key traits of this Queen. She can be cruel to be kind, not wasting time on frills and fuss but getting to the crux of things.

As an attitude or approach, this card is about taking ownership of the truth and working with it to make things better. Design and create your future, built on the circumstances you're truly in, and unleashed by the imaginative power of what could be.

On the shadow side, this Queen can be manipulative, overly critical and too sharp to handle.

CORRESPONDENCES

The Queen of Swords could reveal events unfolding within the year. Swords also



represent the Air element, which points to the months of February, June and October.

PEOPLE REPRESENTED

If this card represents a person in your reading, they are possibly an Air sign such as Gemini, Libra or Aquarius (because Swords represents the Air element). Typically a mature woman who is clever, shrewd and honest but sometimes ruthless.

AFFIRMATION ASSOCIATED WITH THIS CARD

My mind is always sharp and clear. I know, understand and prioritize my ambitions.

CRYSTAL ALIGNED WITH THIS CARD: BLACK DIAMOND

Diamonds are the hardest and most durable of all gemstones. They will scratch other crystals easily and are often used in industry for cutting gemstones. These qualities, as the Queen of Swords knows, can be advantageous, but not if that's all you are. Thankfully, as well as being tough, black diamonds encourage commitment and integrity and have a heart of mystical power that radiates loving, optimistic vibes that will help you stay focused and clear, even when under pressure.

KING OF SWORDS

TALISMAN

I am creating a vision of my future ideal life.

INTERPRETATION

Kings represent leadership, the ultimate attainment of the power of their particular suit, so this is a card about intellectual prowess, tempered with emotional intelligence. This King is a particularly adept future-proofer, able to (mentally) get away from the pressure and noise of daily life and project his gaze ahead on his trajectory. He can see where he's heading, assess if that's the desired outcome, and make adjustments in the here and now to walk the path he wishes to pursue. He's always one step ahead.

As an attitude or approach, this King wants you to create, prioritize and work on a future vision of your ideal life, one built on sound judgement and rationale.

On the shadow side, this King can tip over into displaying overbearing, bullying, cruel and deceitful behaviours, using his powers to squash the ambitions of others.

CORRESPONDENCES

The King of Swords could reveal events unfolding within the year. Swords also represent the Air element, which points to the months of February, June and October.



PEOPLE REPRESENTED

If this card represents a person in your reading, they are possibly an Air sign such as Gemini, Libra or Aquarius (because Swords represents the Air element). This would typically a mature male who is wise, forward thinking, innovative and sharp-witted.

AFFIRMATION ASSOCIATED WITH THIS CARD

I strongly acknowledge my capacity to succeed.

CRYSTAL ALIGNED WITH THIS CARD: BLACK SPINEL

Black spinel strongly amplifies creativity, boosts confidence and helps to sustain stamina. It is a stone of prosperity and abundance (perfect for manifesting) and, like many other black stones, is also protective. Usually only found in small crystal formations, black spinel may be small but its positive, motivating energy is strong, making you feel empowered and inspiring you to achieve your life goals. Black spinel is also said to enhance the positive aspects of your personality and turn negative energy to positive.

ACE OF WANDS

TALISMAN

I am starting a new project or role ideally suited to me.

INTERPRETATION

Aces mean new beginnings and this one is about pursuing a new project, role, lifestyle change, educational ambition or travel goal that feels authentically right for you.

When this card appears, it is a nudge from the Universe to go for whatever gets you fired up and excited. Passion can take you a long way. It's hard to be successful at anything if you don't love doing it.

As an attitude or approach, this card is about activation and creation, feeling optimistic and enthusiastic about getting something started.

On the shadow side, the Ace of Wands may reveal confusion or doubt about what you should do next or how to manifest an opportunity.

CORRESPONDENCES

The Ace of Wands could indicate a one-week time span. Wands also correspond to the Fire element, which points to the months of April, August and December.



PEOPLE REPRESENTED

If this card represents a person in your reading, they are possibly a Fire sign such as Aries, Leo or Sagittarius (because Wands represents the Fire element). This person is going to become a great friend, partner or ally in your life.

AFFIRMATION ASSOCIATED WITH THIS CARD

I am open to the magic that a new beginning brings.

CRYSTAL ALIGNED WITH THIS CARD: CLEAR QUARTZ

Since clear quartz is one of the best energy amplifiers and a stone of action, it perfectly embodies the Ace of Wands. The whole suit of wands is action oriented so clear quartz is the perfect stone to kick off a journey of transformation and begin a new role. It is also an energy transmitter, an information holder and powerful amplifier. Some say you can even program a clear quartz with your intentions and it will hold that energy for you. Try doing just this by holding it in your hand and directing your thoughts and feelings to it.

TWO OF WANDS



TALISMAN

I am making decisions for my own good.

INTERPRETATION

We all reach a point where we start to realize we can (and should) design our lives and control the trajectory we're on, rather than letting others plan our course. This takes focus, intention-setting and persistence in working towards those goals. If you're not in love with what you do every day, then this card says you can (and should) take ownership for making changes.

The only bad decision is to not make a decision at all and let things drift.

As an attitude or approach, the Two of Wands asks you to be honest about what you truly enjoy doing and to make decisions based on that. Zoom in where you feel conflicted or unsure and seek clarity.

On the shadow side, the card can point to listlessness, drifting and feeling that you are not in control but have things done to you.

CORRESPONDENCES

The Two of Wands could indicate a two-week time span. Wands also correspond to the Fire element, which points to the months of April, August and December.

PEOPLE REPRESENTED

If this card represents a person in your reading, they are possibly a Fire sign such as Aries, Leo or Sagittarius (because Wands represents the Fire element). This person can help or inspire you in making meaningful life goals.

AFFIRMATION ASSOCIATED WITH THIS CARD

Today I make magic by creating the life of my dreams.

CRYSTAL ALIGNED WITH THIS CARD: CELESTITE

Powdery blue celestite brings feelings of calm and clarity. If you have difficult decisions to make or are feeling conflicted and feel like you need to tap into your intuition, celestite will bring you to a place of deep peace where you will find inspiration and knowing. When feelings of anxiety become overwhelming or your mind races as you endlessly over-think, a celestite crystal can help you feel calmer and less stressed, breaking the cycle of worry. Believed by some to be a connection to angelic realms, this heavenly crystal is a magical must-have in your collection.

THREE OF WANDS

TALISMAN

I am building on my success.

INTERPRETATION

Life can feel like an adventure, a quest, a mission. This card shows you're ready to take some chances to get where you want to go. Be bold. There are opportunities all around you, every day, to make something happen and build towards what you're trying to achieve. Be mindful, observant, alert. Say 'yes' to new energy and welcome it into your world.

As an attitude or approach, the Three of Wands tells you to broaden your horizons and spot new opportunities close by to expand your ideas and dreams and build on existing success.

On the shadow side, this card can lead to muddles, chaos and simply too much going on all at the same time, with no clear priorities. Things might feel like they're spinning out of control. It's time to streamline and clarify what you're doing.

CORRESPONDENCES

The Three of Wands could indicate a three-week time span. Wands also relate to the Fire element, which points to the months of April, August and December.



PEOPLE REPRESENTED

If this card represents a person in your reading, they are possibly a Fire sign such as Aries, Leo or Sagittarius (because Wands represents the Fire element). This person could present you with an unmissable opportunity.

AFFIRMATION ASSOCIATED WITH THIS CARD

Wonderful things are going to happen today, and an adventure awaits me.

CRYSTAL ALIGNED WITH THIS CARD: AURA QUARTZ

Rainbow aura quartz and opal aura quartz are both natural clear quartz that has been synthetically bonded with gold or platinum to create shimmery metallic reflections on its surface. A combination of the wonders of nature and the creativity of humans, aura quartz is a reminder not to take life too seriously. Playful, magical and vibrant, aura quartz is a crystal of optimism, wonder and joy that can renew your zest for life and help you to see the limitless possibilities that lie ahead if you allow yourself to embrace them. Use aura quartz in a spread whenever you need a little creative magic.

FOUR OF WANDS

TALISMAN

I am working hard to improve my prospects.

INTERPRETATION

Raise a toast to yourself! The Four of Wands is a nudge to pause and reflect on all that you've already achieved. It also sends a signal to the Universe that you're grateful for all the opportunity – and would like more of the same, please.

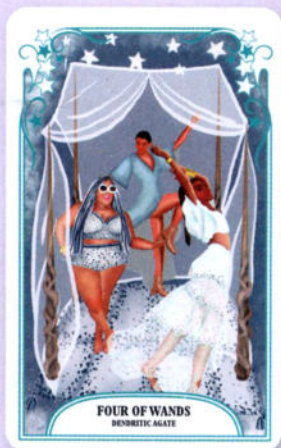
Sometimes, this card is an indication that your home or location is about to receive a major glow-up as the result of your hard work, application or reward.

As an attitude or approach, the Four of Wands urges you to celebrate the positives, share the success, be appreciate of the opportunities and get ready to push on to get more of the same.

On the shadow side, this card can show a struggle to achieve or pin down success. Life is being slippery or challenging, and it's difficult to see a way through.

CORRESPONDENCES

The Four of Wands could indicate a four-week time span. Wands also relate to the Fire element, which points to the months of April, August and December.



PEOPLE REPRESENTED

If this card represents a person in your reading, they are possibly a Fire sign such as Aries, Leo or Sagittarius (because Wands represents the Fire element). This person has your back, wants the best for you and can be relied upon.

AFFIRMATION ASSOCIATED WITH THIS CARD

Today I celebrate my success and welcome the opportunity for more.

CRYSTAL ALIGNED WITH THIS CARD: DENDRITIC AGATE

A stone of plenitude, dendritic agate brings abundance and an attitude of gratitude. If you're celebrating your success and you want the universe to know that you appreciate every gift you've been given, this beautiful snowy-white crystal is an embodiment of that intention. Helping you stay connected to your roots and grounded as you grow, in whatever path you choose, a dendritic agate as your talisman will attract more of the same energy whilst encouraging you to enjoy your success every step of the way.

FIVE OF WANDS

TALISMAN

I am trying to resolve an issue.

INTERPRETATION

Not many of us relish conflict, tension or arguments with others, but we all get into it. The Five of Wands shows you're in the thick of a challenging skirmish that is bringing change and stress into your life. There's no avoiding this confrontation, but it does present an opportunity to learn to fight well. Seek out the root causes of the issue, try to align on that, look for damage-limiting, mental common ground – then you can concentrate on finding where you can align on a resolution.

Be objective, factual, dispassionate. Don't bring more flame to the fire (you'll only spend longer putting it out). Expel your passions elsewhere (through exercise, journaling, venting to a friend).

As an attitude or approach, the Five of Wands asks you to create a logical strategy to deal with this conflict.

On the shadow side, the Five of Wands points to a conflict that will end in stalemate, deadlock or division. Sometimes you have to part company to bring peace.

CORRESPONDENCES

The Five of Wands could indicate a five-week



time span. Wands also represent the Fire element, which points to the months of April, August and December.

PEOPLE REPRESENTED

If this card represents a person in your reading, they are possibly a Fire sign such as Aries, Leo or Sagittarius (because Wands represents the Fire element). This person may be in conflict with you, and you're trying to come to a resolution with them.

AFFIRMATION ASSOCIATED WITH THIS CARD

I can harness positive emotions while still dealing with this issue.

CRYSTAL ALIGNED WITH THIS CARD: SELENITE

When there is negative energy around a situation, you need a cleansing crystal in your arsenal. Selenite is one of the best cleansing crystals as its fine vibration brings calm, protection and clarity of thought. If you have conflict to resolve, arm yourself with a selenite wand and you will go into battle with a clear mind, an understanding attitude and better judgement. Selenite is also a wonderful protector for your home so keep one by the door to purify the aura of anyone who enters.

SIX OF WANDS

TALISMAN

I am building on my successes.

INTERPRETATION

It has all been for a reason. Everything that has happened has brought you to this very moment in time, with all of the experience and wisdom you've earned. Savour who you are right now.

The Six of Wands demonstrates that you are in exactly the right place at the right time to manifest something wonderful. You are succeeding, progressing and building on all that you have worked so hard for up until now. We all have to acknowledge our milestones and achievements to encourage more of the same positive progress.

As an attitude or approach, this card tells you to appreciate where you're at and all the life lessons and experience that has got you here. Use it. Go for what you dream of.

On the shadow side, the Six of Wands could reveal doubt and confusion about your goals and position, perhaps too often seeking approval and validation from others.

CORRESPONDENCES

The Six of Wands could indicate a six-week time span. Wands also represent the Fire element, which points to the months of April, August and December.



PEOPLE REPRESENTED

If this card represents a person in your reading, they are possibly a Fire sign such as Aries, Leo or Sagittarius (because Wands represents the Fire element). They are an ally and partner in success, you can make magic with this person!

AFFIRMATION ASSOCIATED WITH THIS CARD

Everything that has happened to me in my life has brought me to this exact moment, and I choose what happens next.

CRYSTAL ALIGNED WITH THIS CARD: BLUE TOPAZ

Blue topaz is a stone of good fortune, joy and generosity. It brings peace and clarity to the mind and also stimulates creativity and self-assurance, giving you the confidence to be bold and take another step to making your dreams into a reality. A high-vibration stone with a bright yet tranquil, happy energy that instills feelings of self-belief and joy, opening a window in your soul to let your inner light shine out into the world. Use topaz's positive, affirming vibes to magnify your intention and manifest your wishes and use its wisdom to see your own truth and highest path.

SEVEN OF WANDS

TALISMAN

I am competing for something I truly want.

INTERPRETATION

Hold your position, stay strong, rise up to the challenge and stand your ground. Others covet and desire what you have, or are aiming for, and I guess that is a strong signal that you're in the right place. If there's competition, then the prize must be worth winning, right? And you can do this, you can handle this, you can win. Just keep going – don't give up.

As an attitude or approach, this card urges you not to quit. Fight for what you want or believe in. Stand tall.

On the shadow side, you might find yourself doubting your abilities or resilience, or feeling overwhelmed by having to face up to a big test. Dig deep.

CORRESPONDENCES

The Seven of Wands could indicate a seven-week time span. Wands also represent the Fire element, which points to the months of April, August and December.



PEOPLE REPRESENTED

If this card represents a person in your reading, they are possibly a Fire sign such as Aries, Leo or Sagittarius (because Wands represents the Fire element). They might be challenging you or in competition with you. Let their presence fuel your ambition and fire.

AFFIRMATION ASSOCIATED WITH THIS CARD

Great things don't come from my comfort zone.

CRYSTAL ALIGNED WITH THIS CARD:

BLUE KYANITE

Blue kyanite is a useful crystal to have in an argument because it deflects negative energy and helps you to communicate. If you need to facilitate a difficult conversation, have a confrontation looming or a need to make yourself heard by someone who isn't great at listening, blue kyanite will be the sword at your side to take into battle, dispelling fear and cutting through misunderstanding. This icy to midnight blue crystal can help you find your voice and speak your truth honestly and openly without fear whilst dispelling confusion and frustration from all sides.

EIGHT OF WANDS

TALISMAN

I am building a useful and positive network of contacts.

INTERPRETATION

This card represents opportunity and communication, and the notion that it's sometimes who versus what you know that can get you ahead of the game. It reveals you're about to find yourself at the epicentre of a communications highway, receiving offers, invitations, information, opportunity and news from all directions – all of which you can use!

As an attitude or approach, this card tells you to be alert, open and ready to react quickly to whatever is on offer. It tells you to work on your network of contacts – nurture, support, expand and rekindle them.

On the shadow side, the Eight of Wands can reveal stagnation, stubborn refusals to collaborate or co-operate, and a general lethargy and slowness of ideas and action.

CORRESPONDENCES

The Eight of Wands could indicate an eight-week time span. Wands also represent the Fire element, which points to the months of April, August and December.



PEOPLE REPRESENTED

If this card represents a person in your reading, they are possibly a Fire sign such as Aries, Leo or Sagittarius (because Wands represents the Fire element). They could be someone who can present you with an opportunity or open up a network to you.

AFFIRMATION ASSOCIATED WITH THIS CARD

I am building a healthy and authentic network of positive people around me.

CRYSTAL ALIGNED WITH THIS CARD: BLUE LACE AGATE

Blue lace agate – so called because of the delicate white bands that often run through it – is also known as the 'communication stone'. As well as being pretty, this pastel blue stone brings calm and tranquility, helping to ease nerves, especially in areas of communication, like public speaking, presentation giving, networking events or anywhere you might need to express yourself. If you're prone to social awkwardness, blue lace agate may help you to feel more confident and less judged, in turn allowing you to be yourself, opening up the doors to new opportunities and letting others truly see your worth.

NINE OF WANDS

TALISMAN

I am tackling my biggest obstacle.

INTERPRETATION

The Nine of Wands tells you not to give up and to press on with confidence towards the obstacles, blocks and issues in your life right now. The cosmos has got your back and you can overcome whatever lies in front of you, so don't waste any more time.

This is the storm before the calm, the dark before the dawn, the tough bit before you make a breakthrough and can sail onwards to smoother seas. Don't linger here; push past this challenge.

As an attitude or approach, the Nine of Wands tells you to take a deep breath and face your demons and issues. You can handle them; it's not going to be half as bad as you fear.

On the shadow side, this card shows you're struggling to get on top of your to-do list or to achieve your goal. You have stalled in the face of an obstacle and are avoiding it instead of tackling it.

CORRESPONDENCES

The Nine of Wands could indicate a nine-week time span. Wands also represent the Fire element, which points to the months of April, August and December.



PEOPLE REPRESENTED

If this card represents a person in your reading, they are possibly a Fire sign such as Aries, Leo or Sagittarius (because Wands represents the Fire element). This person may be a part of the solution you're trying to create but they may be part of the problem.

AFFIRMATION ASSOCIATED WITH THIS CARD

I will follow through with every choice I make.
Today I am persistent and unstoppable.

CRYSTAL ALIGNED WITH THIS CARD: AZURITE

Azurite is a great energy purifier if you're feeling stressed, stagnant or overwhelmed. Like taking a deep breath and exhaling all the shit you've had enough of, azurite can bring that feeling of letting go, clearing all the pent-up angst and tension you've been holding on to and allowing you to see with clearer vision from a new perspective. It's the pep talk you needed to just keep on keeping on. Use Azurite in a spread when you need to channel some true badass energy; it can help the path ahead seem a little clearer and easier to navigate.

TEN OF WANDS

TALISMAN

I am releasing my burdens and baggage.

INTERPRETATION

The workaholic card, the card of overwhelm, the card that is waving a red flag telling you to unburden yourself right now, because you're being dragged under.

The Ten of Wands urges you to stop taking on others' responsibilities, overthinking everything, being a martyr, letting people take advantage, and doing too much. Scale back your accountabilities to your direct circle of influence.

As an attitude or approach, the Ten of Wands is a definite less-is-more vibe. Audit and release commitments, duties, tasks and obligations. Do what only you alone bring value to and can do.

On the shadow side, this card tells of a heavy weight which is unnecessary in your life and should be released immediately before it impacts upon your health and wellbeing.

CORRESPONDENCES

The Ten of Wands could indicate a ten-week time span. Wands also represent the Fire element, which points to the months of April, August and December.



PEOPLE REPRESENTED

If this card represents a person in your reading, they are possibly a Fire sign such as Aries, Leo or Sagittarius (because Wands represents the Fire element). This person could be putting a burden on your shoulders that you need to shrug off.

AFFIRMATION ASSOCIATED WITH THIS CARD

I release all negative energy from my mind and body. I release the need to blame anyone, including myself.

CRYSTAL ALIGNED WITH THIS CARD: AQUAMARINE

Known as 'mermaids' treasure', aquamarine was carried by sailors to protect them from drowning. It is a stone of calm and tranquillity. If you need to shed some baggage, or if you are feeling like you are drowning emotionally, this dreamy aqua-blue or almost clear crystal can help. Aquamarine washes away fear, bad vibes and stress. Calming and soothing, it inspires trust in the Universe and helps you let go of worry leaving space for you to see what's on the horizon with optimism. Aquamarine is also a talisman for good luck, fearlessness and protection, especially for travel over water.

PAGE OF WANDS

TALISMAN

I am bringing my projects to completion.

INTERPRETATION

The Page of Wands is full of energy and ideas. This card is extremely creative and bold but can lack focus and follow-through. Many projects are started and attacked with great gusto, only to fade and fail to the wayside as the next shiny new idea emerges.

Follow through on your ideas. Put them into motion. Don't overthink it. Don't pressurize yourself into thinking it all has to be right first time either; perfectionism is the enemy.

As an attitude or approach, the Page of Wands says 'have a go', and if it doesn't work then move on, but if it does, then stick with it and see it through. Focus with intent on your priorities.

On the shadow side, this card can bring bad news, setbacks, delays and confusion to situations in your life. This Page can be unreliable, promising too much but not delivering.

CORRESPONDENCES

The Page of Wands could indicate events unfolding within weeks rather than days or months. Wands also represent the Fire



element, which points to the months of April, August and December.

PEOPLE REPRESENTED

If this card represents a person in your reading, they are possibly a Fire sign such as Aries, Leo or Sagittarius (because Wands represents the Fire element). They could be younger, possibly a student or apprentice.

AFFIRMATION ASSOCIATED WITH THIS CARD

I am done with delay, I take action today!

CRYSTAL ALIGNED WITH THIS CARD: APATITE

When you need some willpower or help in making the right choices, apatite is your aid. Like that friend who *makes* you go to the gym with them when you want to pack it in but then you actually feel amazing after you have been, that's the friend apatite can be for you. If you have trouble with setting goals and then abandoning them, apatite's gentle detoxing force purges those unhealthy or negative behaviour patterns and forms a supportive bubble of kindness that allows you to focus on what you want most, not what you want right now.

KNIGHT OF WANDS

TALISMAN

I want to create an adventure.

INTERPRETATION

The Knight of Wands is carefree, spontaneous, sometimes reckless but usually lucky and therefore everything turns out well in the end. He lives day to day, seizing whatever arises, working with the energy at hand. He sees life as an adventure.

Perhaps you're about to meet a Knight of Wands and be infected with their boldness and curiosity. Perhaps you are embodying these traits yourself and preparing to head out on a new quest.

Travel is also indicated with this card.

As an attitude or approach, this Knight asks you to follow your best hopes.

On the shadow side, this could signal a peak of energy with nowhere useful for it to go, like a bottleneck of passion and imagination with no traction to get things manifesting IRL.

CORRESPONDENCES

The Knight of Wands could indicate events unfolding within weeks rather than days or months. Wands also represent the Fire element, which points to the months of April, August and December.



PEOPLE REPRESENTED

If this card represents a person in your reading, they are possibly a Fire sign such as Aries, Leo or Sagittarius (because Wands represents the Fire element). This person is a breath of fresh air, they bring excitement and passion.

AFFIRMATION ASSOCIATED WITH THIS CARD

My life is miraculous and wonderful things lie in store for me today.

CRYSTAL ALIGNED WITH THIS CARD: OPAL

Said to hold the energy of all gemstones, opals burst with colour with light reflecting and refracting in all directions, creating a kaleidoscope of mesmerizing rainbows. If you want to harness spontaneity, optimism and mysticism, use an opal to embrace the unknown and let an adventure unfold. Thought by ancient cultures to have fallen from thundery skies with lightning trapped within them, opals have been a stone of mystery and magic for thousands of years. This crystal can help you to see your full potential and amplifies your self worth and is said to stimulate your metaphysical gifts too.

QUEEN OF WANDS



TALISMAN

I am making headway in my career.

INTERPRETATION

The Queen of Wands is either a presence in your life or the attitude you need to adopt. Either way, this person or energy is dynamic, go-getting, competitive, passionate, authentic and ready to take on anything.

The Queen of Wands is a new leader, finding her feet with the responsibility, but warming everyone around her with her infectious good nature and vision. She pursues win:win solutions.

As an attitude or approach, the Queen tells you to take it on, step it up, go for it, make a splash, have faith in yourself, broaden your role or scope and progress in your work and life.

On the shadow side, this Queen can point to feeling fatigued by something (maybe work or some kind of project) or an unwillingness to put the necessary effort and energy into something.

CORRESPONDENCES

The Queen of Wands could indicate events unfolding within weeks rather than days or months. Wands also represent the Fire element, which points to the months of April, August and December.

PEOPLE REPRESENTED

If the Queen of Wands represents a person in your reading, they are possibly a Fire sign such as Aries, Leo or Sagittarius (because Wands represents the Fire element). This may be an older woman, she is incredibly direct and ambitious, eager to get ahead, full of ideas and passion.

AFFIRMATION ASSOCIATED WITH THIS CARD

I work with abundant confidence and enthusiasm.

CRYSTAL ALIGNED WITH THIS CARD: TANZANITE

Tanzanite is found in only one place on earth, near Mount Kilimanjaro in Africa. This beautiful violet stone is one of the rarest stones on Earth, even more so than diamonds! A crystal of truth, trust and spirituality, tanzanite encourages you to be the best version of yourself, in your highest power, and can help you align with your soul's highest purpose. If you need a crystal to help you achieve the vision you have for your life in an authentic and inspiring way, or if you need help connecting to your true vocation, use magical tanzanite as your talisman.

KING OF WANDS



TALISMAN

I am taking on a leadership role.

INTERPRETATION

Wise, assertive, brave, resourceful, inspiring, dynamic, charismatic, this King is a real fire-starter and a shrewd leader of others, able to inspire people and understand their true motivations.

Maybe this is who you're becoming, maybe it's someone you're about to meet, maybe it's a more abstract representation of that attitude being something you are working on or encouraging in others.

Wands can also signify travel, so this may be a nudge to broaden your horizons.

As an attitude or approach, this card urges you to take the lead, find ways to inspire yourself and others, and set a great example of how things should be done. Be bold, confident and passionate.

On the shadow side, the King shows you might find yourself in a leadership role or position but feel unsure how to handle it or what to do.

CORRESPONDENCES

The King of Wands could indicate events unfolding within weeks rather than days

or months. Wands also represent the Fire element, which points to the months of April, August and December.

PEOPLE REPRESENTED

If this card represents a person in your reading, they are possibly a Fire sign such as Aries, Leo or Sagittarius (because Wands represents the Fire element). They could be an older male, someone who is inspiring, brave and charismatic. This person lights up the room.

AFFIRMATION ASSOCIATED WITH THIS CARD

My presence is my power and I have the power to lead others towards positive change.

CRYSTAL ALIGNED WITH THIS CARD: LARIMAR

Larimar is a stone of calm and tranquillity, like many other blue stones, but can also help you to take control of life by removing fear and helping you adopt a go-with-the-flow attitude. If you find yourself in a position where you have to step up and take the lead, larimar can help you do so with clarity and creativity. A leader doesn't always need to be bossy and brash. Larimar shows you that you can be powerful in a quiet way, too.

ACE OF CUPS

TALISMAN

I am looking for a new love of my life.

INTERPRETATION

Aces mean new beginnings and this one is about love and romance, important relationships and bonds, births and family, and even heartfelt creative projects. All of these things could be on the cards.

Engage with a principle like the Law of Attraction to accelerate the new things you want to enter your world.

As an attitude or approach, the Ace of Cups is about charging yourself with self-love and confidence so that you can become what you wish to attract in the world.

On the shadow side, the Ace of Cups can show a timidity or fear about really connecting with others, or with your creative, soulful side. This fear may reside in the memories of childhood.

CORRESPONDENCES

The Ace of Cups could indicate a one-day time span. Cups also represent the Water element, which points to the months of March, July and November.



PEOPLE REPRESENTED

If this card represents a person in your reading, they are possibly a Water sign such as Pisces, Scorpio or Cancer. They could be a love interest, a new friend or family member, or a partner in a creative project.

AFFIRMATION ASSOCIATED WITH THIS CARD

I am becoming what I wish to attract in life.

CRYSTAL ALIGNED WITH THIS CARD: COBALTO CALCITE

This beautiful bright pink, joyous crystal has boundless positive, loving energy and brings a burst of self-belief and happiness, reminding you that you are not just worthy of love but can be such a beacon of positive vibes that you can't fail to attract the same bright, loving energy back to you. A stone of the self-love and the open heart, cobalto calcite can also help you find your way, and your worth, if you've been bruised in past relationships. As RuPaul says, 'If you can't love yourself, how in the hell are you gonna love somebody else?'

TWO OF CUPS



TALISMAN

I want to develop my most important relationship.

INTERPRETATION

The loving Two of Cups represents a strong and lasting bond with a lover, friend, colleague or business partner. Romance is the most likely ingredient, but there are other types of twin flame in life. You can trust this person; they've got your back and you can rely on them.

As an attitude or approach, the Two of Cups asks you to be open, invested, positive and engaged with those who are most important to you.

On the shadow side, the Two of Cups could indicate an unhealthy relationship bond, like co-dependence or possessiveness. It could point to a lack of self-respect or care, which you need to restore before enjoying healthy bonds with others.

CORRESPONDENCES

The Two of Cups could indicate a two-day time span. Cups also represent the Water element, which points to the months of March, July and November.

PEOPLE REPRESENTED

If this card represents a person in your reading, they are possibly a Water sign such as Pisces, Scorpio or Cancer. They are likely to be a person you feel totally in cahoots with, and you're right to trust and believe in this relationship.

AFFIRMATION ASSOCIATED WITH THIS CARD

I am loved, valued, needed and appreciated.

CRYSTAL ALIGNED WITH THIS CARD: AMETRINE

Ametrine is the perfect relationship of two very complementary stones: amethyst and citrine. In fact, they are the same crystal but citrine has been heated to such high temperatures it has changed colour. Ametrine combines the grounding energy of amethyst with the uplifting energy of citrine. Ametrine brings harmony to relationships by aiding acceptance, releasing negative blocks and bringing solutions where it may have felt there were none to be found. This grounding yet high-vibe crystal can help you to take control of your life with optimism and harmony.

THREE OF CUPS

TALISMAN

I am seeking enjoyment and pleasure in my life.

INTERPRETATION

YOLO! This card is a nudge that we're here for a good time, not a long time, so get busy living. Appreciate, celebrate and enjoy everything in your world, especially your loved ones and friends. Have a party! Head out and socialize! Savour all your advantages, strengths, pleasures and gifts!

As an attitude or approach, the Three of Cups tells you to relax, kick back, take a moment to savour the positives and celebrate all the good things in life.

On the shadow side, the Three of Cups may indicate you're all work and no play right now and finding it difficult to get that happy balance of pleasure and achievement.

CORRESPONDENCES

The Three of Cups could indicate a three-day time span. Cups also represent the Water element, which points to the months of March, July and November.



PEOPLE REPRESENTED

If this card represents a person in your reading, they are possibly a Water sign such as Pisces, Scorpio or Cancer. This is a person you should prioritize having a great time with – go play.

AFFIRMATION ASSOCIATED WITH THIS CARD

I am celebrating my wonderful life.

CRYSTAL ALIGNED WITH THIS CARD: GARNET

Deep blood red, like a pomegranate seed, garnet is a crystal of passion, success and manifestation. If you are looking for passion, or indulging in it, in any area of your life, garnet will happily tag along for the ride, stoking the flames and keeping the vibe high. Knowing too well, though, that too much of anything can be a bad thing, this sensuous dark red crystal actually balances energy, bringing serenity or passion as appropriate, helping you to let go of things which no longer serve you and bringing into your life that which is needed.

FOUR OF CUPS

TALISMAN

I am trying to overcome apathy and discontent.

INTERPRETATION

We all get into these dips and ruts in life, when we take the good stuff for granted, and focus too much on what we perceive we lack.

The Four of Cups is a swift poke to stop mithering, moaning or envying others and obsessing over what you haven't got, because you're fixating on the wrong things, and you need to recalibrate your gratitude for life.

As an attitude or approach, this card asks you to refocus on the good things in your life, re-assess how lucky you truly are, and refresh your appreciation.

On the shadow side, the Four of Cups can point to very low mood, detachment from others and a surge of self-pity.

CORRESPONDENCES

The Four of Cups could indicate a four-day time span. Cups also represent the Water element, which points to the months of March, July and November.



PEOPLE REPRESENTED

If this card represents a person in your reading, they are possibly a Water sign such as Pisces, Scorpio or Cancer. They could be someone you have overlooked or misjudged, perhaps not seeing the wonderful personality or strengths they possess.

AFFIRMATION ASSOCIATED WITH THIS CARD

Life is an amazing gift and I'm glad to be alive.

CRYSTAL ALIGNED WITH THIS CARD: PINK HALITE

In the same way as a salt bath is great for detoxing your body, pink halite is essential if you need to detox your thoughts. This pale pink salt-based crystal can help purify your spirit if you're feeling negative, bringing a fresh sense of perspective and clarity, especially if your energy is being drained by someone or something in your energy sphere, even if it's yourself. Pink halite can help you spot and stop this repressive energy and cleanse your aura from all negative influence leaving you feeling energetically refreshed and recharged.

FIVE OF CUPS

TALISMAN

I am healing from the past.

INTERPRETATION

Loss, mourning, grief, regret – this card suggests you are struggling with a sticky emotion linked to a sad event from your past. It can be hard to get over traumatic events but get over them we must.

As an attitude or approach, you need to consciously and deliberately process your feelings, remind yourself the past is behind you, and look ahead. Every saint has a past, and every sinner has a future.

On the shadow side, the Five of Cups can indicate a deep sorrow or grief, maybe a feeling of guilt, shame or failure linked to it, which makes it even harder to climb out of. But climb you must.

CORRESPONDENCES

The Five of Cups could indicate a five-day time span. Cups also represent the Water element, which points to the months of March, July and November.



PEOPLE REPRESENTED

If this card represents a person in your reading, they are possibly a Water sign such as Pisces, Scorpio or Cancer. This person may need your help and loving support right now.

AFFIRMATION ASSOCIATED WITH THIS CARD

I am patient, give myself time, and let go of things that I cannot control.

CRYSTAL ALIGNED WITH THIS CARD: PINK TOURMALINE

Pink tourmaline is a stone of self-love, compassion and healing. If you suffer from anxiety, often feel distressed or if you tend to take things a little too seriously, pink tourmaline can help you lighten up and encourage a more playful attitude. This crystal is also an ally if your heart is broken and heavy from grief or loss, or you feel emotionally bruised from trauma or tragedy. All colours of tourmaline are healing and great for working through emotional issues, but pink tourmaline is particularly gentle and soothing, assuring you that you are safe and helping you to trust.

SIX OF CUPS

TALISMAN

I want to connect with my past.

INTERPRETATION

The Six of Cups has a playful and affectionate vibe that encourages you to revel in nostalgia and reconnect with your inner child.

Maybe it's a nudge to rekindle an old flame or friendship, pick up a wholesome hobby or childhood talent, visit some nostalgic haunts, or simply return to a scene from childhood and reassess its impact on you.

As an attitude or approach, this card is playful, kind, warm, affectionate and focused on healing and happiness. Be positive. Look to successes and good times in the past to remind you of how things can be in the future.

On the shadow side, this can indicate naivety, or a wilful desire to not see reality as it is now but instead to remain rooted in the past.

CORRESPONDENCES

The Six of Cups could indicate a six-day time span. Cups also represent the Water element, which points to the months of March, July and November.



PEOPLE REPRESENTED

If this card represents a person in your reading, they are possibly a Water sign such as Pisces, Scorpio or Cancer. This could be a connection from childhood or youth.

AFFIRMATION ASSOCIATED WITH THIS CARD

I love and indulge and communicate with my inner child.

CRYSTAL ALIGNED WITH THIS CARD: PINK OPAL

A stone of mysticism, love and happiness, this is said to amplify emotions and bring optimism and positivity, lightness and spontaneity. This crystal can help you to see your full potential and it amplifies your self-worth. Pink opal is an especially joyous stone, helping to lift even the darkest mood and bring back child-like wonder and a playful spirit. In times of depression or sadness, pink opal can strengthen the will to live and be a reminder of how joyful life can be.

SEVEN OF CUPS



TALISMAN

I am bringing my daydreams down to earth.

INTERPRETATION

This is the card of imagination, daydreams, illusions and fantasy, all of which are valuable and necessary in life, but all of which are no substitute, alone, for action and pragmatism. We need both vision and action.

Use your imagination for a practical, positive end – get your ideas down on paper and start them moving.

As an attitude or approach, this card asks you to get out of your own head and bring what's there into the real world and manifest these daydreams in real life.

On the shadow side, this card warns of the type of magical thinking that glosses over reality. Making excuses, burying one's head in the sand, refusing to accept the truth or even making things up!

CORRESPONDENCES

The Seven of Cups could indicate a seven-day time span. Cups also represent the Water element, which points to the months of March, July and November.

PEOPLE REPRESENTED

If this card represents a person in your reading, they are possibly a Water sign such as Pisces, Scorpio or Cancer. This person is likely to be a daydreamer, artistic and imaginative.

AFFIRMATION ASSOCIATED WITH THIS CARD

I am inspired to take action to realize my dreams.

CRYSTAL ALIGNED WITH THIS CARD: VANADINITE

Deep red and formed with a natural hexagonal, crystalline structure, vanadinite is a stone of discipline and focus. If you need help pursuing your goals, rather than just daydreaming about them, vanadinite can give you the mental blinkers you may need to filter out distracting thoughts and get on with what it is you need to get on with. Grounding and energy conserving, this fiery red crystal will quieten a noisy mind and help you to implement boundaries that serve your ambition without time-wasting or procrastinating.

EIGHT OF CUPS

TALISMAN

I am turning a setback into a comeback.

INTERPRETATION

Disappointment is never a welcome visitor in life, but we learn soon enough that the faster we acknowledge its presence, the quicker we can bid it farewell and move on ourselves. See things as they truly are instead of how you wish they would be. Trust that better lies ahead, and this was just preparation.

As an attitude or approach, this card tells you to accept the reality of something, deal with it on those terms, then move on.

On the shadow side, this card might hint that you are refusing to let go of an ideal, relationship, role or activity – even though it's not working. Nothing positive will be gained from clinging to something that is no longer serving you.

CORRESPONDENCES

The Eight of Cups could indicate an eight-day time span. Cups also represent the Water element, which points to the months of March, July and November.



PEOPLE REPRESENTED

If this card represents a person in your reading, they are possibly a Water sign such as Pisces, Scorpio or Cancer. They could be linked to the disappointment you're dealing with.

AFFIRMATION ASSOCIATED WITH THIS CARD

It isn't what happens, it's how I react that matters.

CRYSTAL ALIGNED WITH THIS CARD: RHODOCHROSITE

Rhodochrosite's peaceful, supportive energy can help you overcome disappointment or heartache and identify and deal with destructive emotions so you can move forward and enjoy life, be passionate and express yourself joyfully. If you have unresolved or painful feelings to work through, rhodochrosite can help you overcome them, improving your confidence, self-worth and emotional health. Soothing and gentle, rhodochrosite encourages you to be honest with yourself, especially regarding relationships, and helps you to move out of denial with a positive attitude and to express your true feelings. If you are repressing emotions, rhodochrosite will draw them out.

NINE OF CUPS

TALISMAN

I am making a heartfelt wish.

INTERPRETATION

This card is like a cosmic pass to make a dream come true, to manifest your heart's desire and to achieve an ambition or goal you have long sought after.

As an attitude or approach, this card asks you to live the life you've imagined, to aim high and have faith in your ability to manifest your dreams.

On the shadow side, the Nine of Cups may hint at greed or voracity that may never be satisfied, FOMO, envy, wanting what you can't ever have. Look within to evaluate the nature of your dreams.

CORRESPONDENCES

The Nine of Cups could indicate a nine-day time span. Cups also represent the Water element, which points to the months of March, July and November.



PEOPLE REPRESENTED

If this card represents a person in your reading, they are possibly a Water sign such as Pisces, Scorpio or Cancer. They could be the object of your dream-come-true, or an enabler.

AFFIRMATION ASSOCIATED WITH THIS CARD

I follow my bliss.

CRYSTAL ALIGNED WITH THIS CARD: KUNZITE

Pale pinky-lilac kunzite is a beautifully positive, soft, loving stone that has the energy of candy floss daydreams on a hazy summer day. Kunzite helps you realize your full potential and has the magical ability to convince you on a deep level that your dreams *can* come true and you can do anything you put your mind to, and that you deserve every wish you make. When you want to manifest your most heartfelt dream, let this pink crystal clear obstacles from your path and align your heart and mind to make those dreams reality.

TEN OF CUPS

TALISMAN

I want to create a lasting, loyal, loving relationship.

INTERPRETATION

Domestic bliss and love – a happy home, a strong sense of self-love, wonderful relationships, deep connections and attractions. You belong where you are, the roots you're putting down will last. This is fertile and safe ground.

As an attitude or approach, the Ten of Cups asks you to invest wholeheartedly and positively in your closest relationship. Have faith, be hopeful, show love. This is a bond you can build on.

On the shadow side, the Ten of Cups can reveal a fracture in a relationship or an issue with trust or commitment. Examine your shadow side in relationships.

CORRESPONDENCES

The Ten of Cups could indicate a ten-day time span. Cups also represent the Water element, which points to the months of March, July and November.



PEOPLE REPRESENTED

If this card represents a person in your reading, they are possibly a Water sign such as Pisces, Scorpio or Cancer. They are likely to be someone you're romantically attracted to (or have a deep bond with).

AFFIRMATION ASSOCIATED WITH THIS CARD

I am worthy of love.

CRYSTAL ALIGNED WITH THIS CARD: ROSE QUARTZ

One of the most famous 'love stones', soothing rose quartz is a crystal of *unconditional* love, emotional stability and contentment. Rose quartz brings peace, tenderness and healing and gently eases any feelings of stress, jealousy or resentment. This pastel to deep pink stone can help you find love if that's what you're looking for, by opening your heart, bringing forgiveness, and teaching you to love yourself first and foremost. Also said to be a stone of fertility, maybe because of its motherly energy, rose quartz is a heart-opening, healing wonder stone.

PAGE OF CUPS

TALISMAN

I am using my creativity.

INTERPRETATION

You can't use up your creativity as the more you use, the more you have! The Page of Cups urges all of us to tap into our imagination and bring forth ideas, stories, art, inspirations and new hobbies or activities which put us in flow.

As an attitude or approach, this card is about being open to new inspirations.

On the shadow side, you might be reluctant to share or exercise your creativity, perhaps worried you're not good enough or that others will judge or mock you, or perhaps steal your ideas.

CORRESPONDENCES

Cups have the fastest energy of the four suits and represent days, therefore the Page of Cups represents an event within days rather than weeks or months. Cups also represent the Water element, which points to the months of March, July and November.



PEOPLE REPRESENTED

If this card represents a person in your reading, they are possibly a Water sign such as Pisces, Scorpio or Cancer. They are creative, wholesome, imaginative and kind.

AFFIRMATION ASSOCIATED WITH THIS CARD

I have a magic wand today to make my dreams come true.

CRYSTAL ALIGNED WITH THIS CARD: VERA CRUZ AMETHYST

This variety of pale lavender amethyst comes specifically from the Vera Cruz mine in Mexico and has an especially high vibration that's perfect for manifesting and making wishes come true as it can open your eyes, and heart, to the endless possibilities that the Universe has to offer. This protective stone is your ally when doing any kind of spiritual or psychic work as it will guard you whilst working in other realms whilst also opening gates for you to walk through. A perfect partner for meditation and dreams, the Vera Cruz amethyst is filled with magic, mystery and miracles.

KNIGHT OF CUPS

TALISMAN

I am seeing new love.

INTERPRETATION

Seduction, romance, adventure, being swept off your feet by something inspiring, wonderful and powerful – all of this is what the Knight of Cups brings to your world.

Live out your dreams, be they romantic or adventurous, and pursue an object of affection, whatever it is. Be creative, use your imagination, live large. Write your own life story with confidence.

As an attitude or approach, this card urges you to be led by your best hopes, not your worst fears.

On the shadow side, this Knight can reveal unreliability, recklessness and deceit.

CORRESPONDENCES

The Knight of Cups represents events occurring within days rather than weeks. Cups represent the Water element, which points to the months of March, July and November.



PEOPLE REPRESENTED

If this card represents a person in your reading, they are possibly a Water sign such as Pisces, Scorpio or Cancer. They could be a romantic interest or close, loving friend or family member.

AFFIRMATION ASSOCIATED WITH THIS CARD

I receive love in abundance.

CRYSTAL ALIGNED WITH THIS CARD:

RUBY

One of the four precious gemstones (with emerald, sapphire and diamond), ruby is a symbol of strength, vitality and pure life force. In ancient times it was believed that a ruby would tell you of impending danger by glowing brightly and in Burma it was thought that a ruby on your skin would make you invulnerable. Known as a stone of passion and faithful love, it is said to bring closeness and encourage commitment. Use ruby as a talisman when you need dynamic energy, a positive attitude or boundless enthusiasm.

QUEEN OF CUPS

TALISMAN

I am showing loving care to myself and others.

INTERPRETATION

The patron saint of self-love, compassion for others, and leadership in terms of setting a good example of how to ignite, build and sustain lasting, positive relationships. the Queen can represent glowing romantic love, and also indicate that your relationships are deepening and growing healthily.

As an attitude or approach, this Queen reminds you to take care of yourself before looking after others – you can't give to others if you have nothing left to give. Be as kind to yourself as you would a BFF.

On the shadow side, this Queen can point to co-dependent, overly emotional, possibly toxic relationship bonds, which need rebooting, or even severing.

CORRESPONDENCES

Cups have the fastest energy of the four suits and represent days, therefore the Queen of Cups represents an event which unfolds in days rather than weeks. Cups also represent the Water element, which points to the months of March, July and November.



PEOPLE REPRESENTED

If the Queen of Cups represents a person in your reading, they are possibly a Water sign such as Pisces, Scorpio or Cancer.

This person is a great ally and friend, maybe even a love interest.

AFFIRMATION ASSOCIATED WITH THIS CARD

I actively nurture healthy and wonderful relationships every day.

CRYSTAL ALIGNED WITH THIS CARD: MORGANITE

The Queen of Cups personifies loving self-care, just like morganite. This pastel pink stone brings compassionate, nurturing energy that helps you to believe the best of yourself and to bring out those qualities in others. If the Queen of Cups is the nurturing mother of the tarot deck, then morganite is her heart stone. Intuitive, not afraid of her emotions and in touch with her feelings, this Queen would definitely have a morganite ring, or perhaps an amulet that sits softly at her heart. Bringing sweet, protective vibes, morganite nurtures all relationships and wraps them in loving arms.

KING OF CUPS

TALISMAN

I am happy in my own skin.

INTERPRETATION

Emotional maturity is about being self-aware, non-judgemental, compassionate and in a strong enough emotional position to share your kindness, wisdom and support with others without it taking too heavy a toll on you.

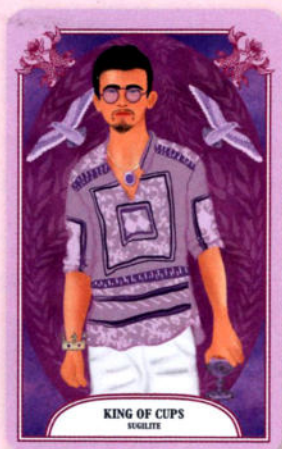
This King is passionate and wise, intuitive and shrewd. It's all a balancing act, and the King of Cups has cracked the code of being able to stay open to his feelings without being overwhelmed by them.

As an attitude or approach, the King asks you to balance your feelings with your intellect, to meditate and reflect until your head and heart are in alignment.

On the shadow side, there may be themes of emotional blackmail, manipulation, jealousy or over-sensitivity in your relationships that you need to address.

CORRESPONDENCES

The King of Cups represents event which unfold in days rather than weeks. Cups represent the Water element, which points to the months of March, July and November.



PEOPLE REPRESENTED

The King of Cups represents a person in your reading, they are possibly a Water sign such as Pisces, Scorpio or Cancer. They are a wise and trusted confidant.

AFFIRMATION ASSOCIATED WITH THIS CARD

I am wise, loving and strong for myself and others.

CRYSTAL ALIGNED WITH THIS CARD: SUGILITE

Sugillite is the wise friend you always wanted, the compassionate comforter and protector of your open heart. A stone especially for the misfits and oddballs, sugillite helps you to find your place in the world and sit comfortably in your own skin. This beautiful pink stone also helps you let go of past hurt or anger, giving the gift of optimism and emotional strength in its place bringing light and hope into the darkest depths of despair and creating a warm, protective shield of light around those who are sensitive, making the harsh world we live in feel a little warmer.



MANIFESTING CRYSTAL SPREADS

In this section, we will show you how to put all this knowledge into practice, so you learn how to use your tarot and crystals together to manifest what you want in your life.

WHERE YOUR FOCUS GOES, YOUR ENERGY FLOWS

We all know people who complain all the time and have the worst luck, don't we? The people who always say, 'Bad things always happen to me, I'm so unlucky'. They are telling the Universe they're unlucky, so the gods, karma, Spirit or whoever is listening are like, 'Okay, noted!'. Those who are grateful, humble and kind, seem to have nothing to complain about and see the positive in every situation, they talk the talk and walk the walk – and the Universe takes note of that too. They are manifesting their own positivity.

Manifesting is basically telling the Universe you're serious about getting what you want. The energy you put in will be matched, or amplified, by the Universe. If you put in little or no effort, you'll get little or nothing back. If you work towards your goal every day, the Universe will pay you back. You just have

to let the cosmos know you mean business by starting your journey towards making your intention a reality. Time to stop daydreaming and start scheming!

HOW DO I MANIFEST MY INTENTIONS?

In a traditional tarot reading, the cards are used to answer questions and seek guidance. You ask a specific question, then lay out the cards according to an appropriate pattern, then interpret an answer to your question depending on the cards and their position in the layout. You can do this with the tarot cards in this deck.

You can also use them as tarot talisman cards. Every card represents an intention and can therefore be used as the centrepiece of a manifesting spread, acting as a focus point for your desires. In these spreads, instead of beginning a reading with a question, we start with an intention – what you actually want to happen. Each intention aligns to a specific tarot card, detailed in the card descriptions. Just pick out a card that best matches with your intention and aligns with what you wish to manifest. Its role is not to answer any questions but to embody the energy of your intention

and become a talisman for it. There are 78 different intentions described in this book, each one aligned to one of the tarot cards in this deck. That's more than enough for a lifetime of manifesting!

CHOOSING YOUR CRYSTALS

Crystals play a huge role here. In this deck we've paired every tarot card to a crystal that aligns to its energy. For most, this is to amplify and enhance it, but for the cards with more negative connotations, the crystal will seek to protect you from it. So, if you are crazy for crystals and have a massive collection, you can match them all up. Your stones can be big, small, rough, polished, even a piece of jewellery – it's up to you.

However, IRL, we know it isn't likely that you'll have enough stones to match each card. You probably have a few pieces, maybe a jewellery item or two, maybe none at all. It's okay. Seriously, you can still do this even if you have just a handful of stones.

The crystals you use don't have to match the crystal described on the tarot card exactly as long as they match the colour group. The cards are all colour-coded so that, when you use them, you can see at a glance which coloured stone matches that card.

We have aligned each suit to a colour group and the major arcana will stay within that palette, too. So, truly, at the most fundamental level, you only really need four stones, one for each of the colour groups below.

If you already know that your readings are going to be focused on a certain theme, then you could even just get a stone that aligns with the tarot suit reflecting that theme:

- * **COINS:** green / yellow / gold
work, money, home, health
- * **SWORDS:** white / clear / blue/ indigo
conflicts, priorities and ambitions, truth, stay-or-go decisions
- * **WANDS:** black / grey / brown / orange
creative projects, lifestyle, education, travel
- * **CUPS:** red / pink / purple
relationships, family, love, emotions

You can also substitute stones, gems or crystals for what we call 'wild stones': pebbles, rocks, shells, fossils, chippings, sea glass – whatever you find outdoors that is a stone-like material of the appropriate colour. These are freely available anywhere and everywhere. You could even colour them yourself. The point is that you can have something physical to invest your intentions into. Crystals are ideal, but these natural things will work too. If you really want to keep it super-simple, you can just use one super-stone for all the colours: one powerful crystal that can pretty much do the job of all of them. There are two ideal options you could use here:

- * **Clear quartz** or **aura quartz**.
- * **Opal** (said to contain the power of all the gemstones) or **rock salt**, which is actually a crystal you can programme for any of your needs. One of those and will cover all bases for you.

So don't worry that you need 78 different crystals. You don't. At its most basic, you can just use one.

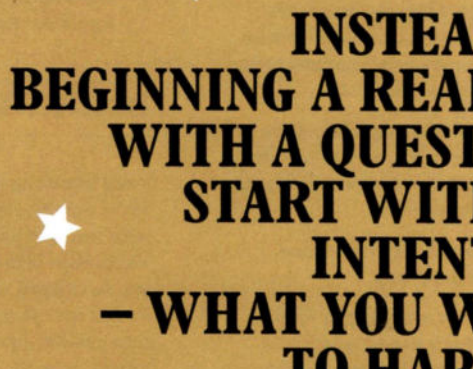
The crystal's role is to bring energy and power to your intention, and to be charged by it, so you can then carry, or hold the crystal, or meditate with it. The crystal holds the intentional power of your manifestation spread within it (until you do a new spread and recharge it with something else).

CREATING A POWER GRID

Once we have our deck and crystals, we lay out the cards in a specific grid, depending on our intentions. Once you have created the power grid, you can put the appropriately matching stone on top of your central tarot talisman. If you wish, you can place other stones onto the cards answering key questions in your spread, if you felt that card described something you really wanted to work on.

The crystals are linked with the tarot cards, and both energized with your intention. You can then utilize the crystals – or, indeed, the cards, although maybe crystals are easier to carry and use – as portable reminders and boosters for your intention as you go about your life, helping you to manifest it.

To keep your intention firmly rooted in your daily life, we have given every card an affirmation linked to its intention. Repeat this affirmation three times morning, noon and night to reaffirm your resolve and determination to succeed.



**INSTEAD OF
BEGINNING A READING
WITH A QUESTION,
START WITH AN
INTENTION
– WHAT YOU WANT
TO HAPPEN.**

THE TAROT CRYSTAL SPREADS

You can create your own spreads for any number of different intentions, but you may want to practise with one that we've designed for you first. You'll soon get the hang of them, and you can begin to customize these designs or design your own completely.

CREATING TAROT INTENTION SPREADS

Here's how you lay out a manifestation spread.

- ★ Choose a spread that aligns with what you wish to bring forth.
- ★ Select a card that aligns with this intention. Put this card in the middle, with the corresponding crystal on top. These are your talismans.
- ★ Shuffle your deck and choose the cards for the spread. You can let them drop, cut the deck, fan them out – whatever your shuffle style is.
- ★ Lay your cards out in the shape and order described.
- ★ Interpret your reading and write it down so that you can reflect on it and re-interpret as events unfold.
- ★ You could add further flourishes to your grid to make it personal, relevant, charged or just pretty.
- ★ Take a photo of your power grid, or leave it there for a week or so to remind you of your intention.
- ★ Keep the tarot talisman and/or stone with you to keep bringing you a little power boost to push towards your goal and to be a constant reminder of what you wish to achieve.
- ★ Say your affirmations, related to your tarot talisman, three times every day.

TO ATTRACT WEALTH

If you're looking to bring abundance into your life in a material sense, this manifesting spread is for you. Maybe you want a pay rise, maybe you have a debt to pay off that's keeping you up at night, maybe you want to be able to look after your family and give them the financial assistance they need. We all need, and deserve, to feel free financially, but do

remember that true wealth is about so much more than money.

CHOOSING YOUR CARDS AND CRYSTALS

For this spread, choose a tarot card that aligns with what you want. The suit of Coins is based in the material world so they may play a part here. Choose a statement fits your desire best from the list below and select that card.

- * **Queen of Coins** - 'I want to take care of myself and my family financially'.
- * **Four of Coins** - 'I want to pay off my debts and feel financially free and responsible'.
- * **Three of Coins** - 'I want a pay rise at work'.
- * **Ten of Coins** - 'I want to have money for my future and better financial security'.
- * **Ace of Coins** - 'I am investing in building my future security'.

Now choose a crystal that matches the card you have selected.

LAYING YOUR TALISMAN

First, make sure you are in a quiet space where you won't be disturbed. With your power tarot card and crystal - if you are just using cards, focus on the card illustration - sit with your eyes open and softly focus on the card.

Think of what it will feel like to have achieved your goal. Imagine your wish has come true. How has this money changed your life? How does it feel to have paid off your debt, or to have enough money for thing you most desire? This is your end point, your ultimate goal.

Place your card in the middle of the spread and your crystal on top.

EXPANDING YOUR SPREAD

Now focus on reaching your goal. The questions here may help you uncover some answers or offer guidance around seeking wealth. The fifth place is left blank for you to add your own personal question, specific to your situation. Alternatively,

you may use entirely your own questions.

- * What mindset do I need to adopt?
- * Who is my ally here?
- * What milestones might appear?
- * What message does the Universe have for me?

Still focusing on the feeling of having achieved your goal, shuffle the rest of the cards and cut them. One by one, pull a card for each of the pentacle points.

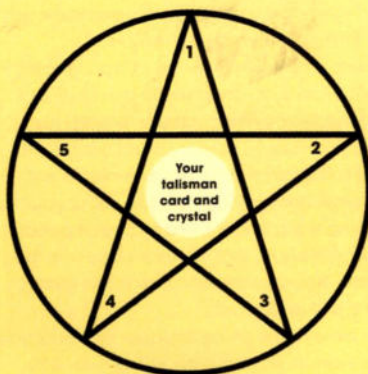
Sit and reflect on your spread for a little while and write down what you think each of these cards is telling you.

If you'd like to you can make a plan of what you can do short, medium and long term to make your intention into reality.

Write down the affirmation associated with your talisman card. Say this out loud three times.

Keep your grid, or just the tarot card and crystal, in your wallet for the next few weeks. You can even wrap a cash note around the card. You can do this spread again in a month or so and see what has changed. If you keep a journal of your grids it can be very interesting to look back on how things panned out!

To attract wealth:



TO CLEAR THE AIR

Sometimes we run into conflict, whether with our co-workers, family, partner or friends. Words spoken in anger can linger in the air and we can spend too much time dwelling on past events, playing and replaying the altercation or argument over and over in our minds. If you find yourself wanting to start a fresh page on a relationship, this spread can help you clear the air so you can move forward with a lighter heart.

CHOOSING YOUR CARDS AND CRYSTALS

Here are some cards that you could use as a talisman to change the energy around a situation.

- * **Ace of Swords** - 'I want to know and share the truth'.
- * **Justice** - 'I want to right a wrong'.
- * **Five of Wands** - 'I am trying to resolve an issue'.
- * **Ten of Swords** - 'I want to move forward and cut ties'.

LAYING YOUR TALISMAN

First, make sure you are in a quiet space where you won't be disturbed. With your power tarot card and crystal - if you are just using cards, focus on the card illustration - sit with your eyes open and softly focus on the card.

Firstly, even though it may feel uncomfortable, think of the person, people or situation that has troubled you and how that made you feel. Let those feelings rise. Now, focusing on your talisman card, take a deep breath in and, as you breathe out, imagine those feelings flowing out of you and forming a big bubble, like a speech bubble, over your head, leaving your body with the breath. Imagine it floating up to the ceiling like a helium balloon.

On a blank piece of paper or a new page of a journal, draw out the sword and write the numbers as illustrated. Now place your talisman card and crystal in the middle of the sword.

EXPANDING YOUR SPREAD

The questions here can help you find answers and may offer a fresh insight on the problem or some sage advice. You might want to add more questions of your own or use entirely your own questions.

- * What attitude do I need to adopt to move forward?
- * What is the root problem here?
- * When will the turning point be?
- * What do I need to be aware of to make sure this doesn't happen again?

Shuffle the cards and pull a card for each number, laying them face down. With a view to dissolving all those negative feelings now held in the bubble above your head, turn over each card in turn.

Write down the affirmation associated with your talisman card. Say this out loud three times.

Keep your crystal with you and each time the feelings you had around this dispute arise, take a deep breath, breathe them out and repeat your affirmation.

To Clear the Air:



FOR A NEW BEGINNING

If you're starting a new project or want to bring change into your life, maybe you're turning over a new leaf or making a fresh start, this spread will help you focus on activating that bud of new life force.

If you wish for a new beginning like moving house, a new business venture, career change or new project, this spread can help let the Universe know you're ready for whatever is next. Using a fresh piece of paper or a new page in a journal is extra symbolic here!

CHOOSING YOUR CARDS AND CRYSTALS

Like a seedling, your new beginning will need energy to grow so choose a talisman card and crystal to help you focus and nurture that energy.

- ★ **The Fool** – 'I wish to begin a new chapter in my life'.
- ★ **Wheel of Fortune** – 'I am activating and welcoming change and transformation'.
- ★ **The Chariot** – 'I am moving to a new place in the world'.
- ★ **Ace of Wands** – 'I am starting a new project or role ideally suited to me'.

Chose a talisman card and crystal that best correspond with your desire and sit with it for a few minutes. Imagine a gust of fresh wind, a wind of change and renewal, blowing in, its icy chill sweeping over your face. The air feels fresher and you are ready to begin.

LAYING YOUR TALISMAN

Turn over your blank piece of paper and draw your grid. Place your talisman card and crystal at the stem of the plant.

The questions on the grid may offer you some advice for your journey. Alternatively, you may use entirely your own questions or add more to this one.

EXPANDING YOUR SPREAD

Shuffle the rest of the cards and cut them. One by one pull a card for each leaf and lay them on the grid.

Think about these questions or change them for your own.

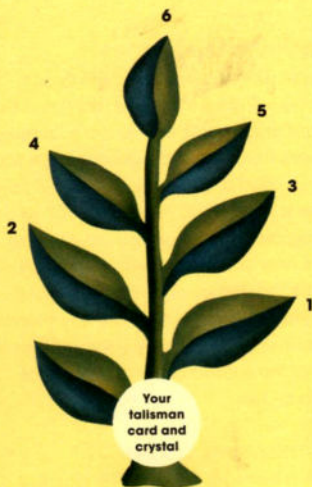
- ★ What am I moving away from?
- ★ Who can help me on this journey?
- ★ What milestones might appear?
- ★ What obstacles might I face along the way?
- ★ What am I moving towards?
- ★ What message does the Universe have for me?

Sit and reflect on your spread for a little while and write down what you think each of these cards is telling you.

Write down the affirmation associated with your talisman card. Say this out loud three times.

If you sleep with your talisman crystal under your pillow, in the morning write down any dreams you had that seem relevant.

For a New Beginning:



TO FIND YOUR TRUE CALLING

Everyone has their own unique talents and gifts that they can offer the world, their sacred calling. Maybe you have a feeling you're supposed to be somewhere else, doing something else but you just don't know what. This spread can help to put you on the path to finding your true calling by attracting the energy you need.

CHOOSING YOUR CARDS AND CRYSTALS

Choose a power card that aligns with your intention, or just pull a card at random and see where it takes you!

- * **Judgement** - 'I want to find my authentic niche in this world'.
- * **The Magician** - 'I am creating something new and unique'.
- * **Seven of Wands** - 'I am competing for something I truly want'.
- * **Queen of Wands** - 'I am making headway in my career'.

Now choose a crystal that aligns with your intention.

LAYING YOUR TALISMAN

First, make sure you are in a quiet space where you won't be disturbed. With your power tarot card and crystal - if you are just using cards, focus on the card illustration - sit with your eyes open and softly focus on the card.

Take a moment to think of the things you like doing and the things you are good at. Imagine how you would feel if every day you did only those things and felt delight and excitement getting out of bed every morning. This is your end point. Place your card in the middle of the spread and your crystal or talisman on top.

EXPANDING YOUR SPREAD

Now focus on reaching that end point. The questions here may help you uncover some answers or offer guidance around

finding your true calling. Alternatively, you may use entirely your own questions or add extra questions of your own.

- * What do I bring to the world?
- * What does the world need of me?
- * What sets me apart from others?
- * What is the next best step on my path forward?

Still focusing on the feeling of pure happiness and contentment, shuffle the rest of the cards and cut them. One by one pull a card for each of the pentacle points.

Sit and reflect on your spread for a little while and write down what you think each of these cards is telling you.

If you feel inspired, write a list of all the places you think your true calling could lie. Write down the affirmation associated with your talisman card. Say this out loud three times.

Keep your grid, or just the tarot card and crystal, close by, in your bag or pinned to a notice board to remind you of your destiny that you have not yet met. You can do this spread again in a month or so and see what has changed. If you keep a journal of your grids, it can be very interesting to look back on how things panned out!

To Find Your True Calling:



TO FEEL LOVED

We are all deserving of love even if you may not have found 'the one' yet. This spread can be used when you need a little help calling love into your life or finding a special someone that you just know in your heart is out there. If you're not sure if you are 100% ready for a life partner – maybe you have had your heart broken before – you can use this spread to amplify your self-love too, and then, when you're ready, do it again with a different talisman card. Remember, though, that you won't meet your soulmate sitting on your sofa at home; you need to take action IRL.

CHOOSING YOUR CARDS AND CRYSTALS

Think carefully about what you really want and choose a card and an appropriate crystal.

- * **Ace of Cups** – 'I am looking for a new love of my life'.
- * **Queen of Cups** – 'I am showing loving care to myself and others'.

LAYING YOUR TALISMAN

First, make sure you are in a quiet space where you won't be disturbed. Have a piece of paper (pink paper is even better) and a pen with you. With your power tarot card and crystal – if you are just using cards, focus on the card illustration – sit with your eyes open and softly focus on the card.

Write down five things you love about yourself. Be kind and be positive, no buts and no supposing. Take as long as you need. If you find this difficult, write the five nicest things anyone has ever said to you, or ask a close friend what they like about you the most.

Now write down five things you find attractive in others. Do any of these qualities cross over? Do you have any of these desirable attributes? If so, imagine someone admiring those traits in you as you would in them. If none crosses over, imagine the unique qualities you have being attractive to others in the same way.

Now envision a person saying to you, 'I love that you ...' and then finish the sentence with each of your five things. How does that make you feel?

Place your talisman card in the middle of the spread and your crystal on top.

EXPANDING YOUR SPREAD

Shuffle the rest of the deck and cut it. One by one pull a card for each point of the heart points.

The questions here may help you uncover some answers or offer guidance around feeling truly loved. Alternatively, you may use entirely your own questions or add extra questions of your own.

- * What is my natural power of attraction?
- * Who should I pay attention to?
- * What do I need from this relationship?
- * What do I need to change?

Practise saying out loud the affirmation associated with your talisman card several times a day. You can also keep your pink love note to yourself with you and re-read all those lovely things you felt about yourself whenever you need a boost of confidence.

To Feel Loved:



TO MEND A BROKEN HEART

If your heart is broken, either through loss, betrayal or the future you believe you had has shattered and you find yourself in a dark new world, unprepared and feeling alone, this spread can help you see the joy in life again and begin to heal and soothe your soul. There is always hope. You may just need to peel back a curtain to see it, this spread will help you do just that.

CHOOSING YOUR CARDS AND CRYSTALS

The strongest card for this manifestation is the Five of Cups.

- * **Five of Cups** – 'I am healing from the past'.

Select the card and crystal.

For this spread you will need your tarot deck and crystal(s), and a candle – any colour will do but white is great.

LAYING YOUR TALISMAN

First, make sure you are in a quiet space where you won't be disturbed. With your power tarot card and crystal – if you are just using cards, focus on the card illustration – sit with your eyes open and softly focus on the card.

Let any feelings that come up do so – you don't need to fight them, just let them wash over you. Thoughts of what or who you have lost may come up, that's okay.

As you sit with your thoughts, hold your talisman crystal in your hand and imagine bright, gentle soothing energy expanding from it and beginning to warm your hand. Imagine this warmth spreading up your arm and flowing to your heart. As your heart beats with this warming energy, it steadily sends it throughout your body.

Now light your candle. Let your eyes softly focus now on the flame. Imagine this to be flame of hope, small but powerful, illuminating the area around it.

Place your card in the middle of the spread and your crystal on top.

EXPANDING YOUR SPREAD

Now shuffle the rest of your deck and cut it. One by one pull a card for each point of the heart points.

The questions here may help you uncover some answers or offer healing guidance. Alternatively, you may use entirely your own questions or add extra questions of your own.

- * Where is the root of my pain?
- * What will help me to move forward?
- * What lies on the path ahead?
- * How can I heal this hurt?

Write down what cards came up. What do you think each one means for you right now?

With the warming bright light of hope in the candle flame and the loving, soothing energy radiating from the crystal in your hand, your heart may feel a little lighter, perhaps a stitch in its wound has been sewn.

Say the affirmation of your talisman card out loud, and any others from your spread that feel pertinent.

Keep your crystal with you, in your pocket, under your pillow and hold it whenever you feel your fresh stitches pull with the ache of a healing wound.

To mend a broken heart:



DESIGNING YOUR OWN SPREADS

With 78 cards and crystals to choose from, you can create many more manifesting spreads for just about anything you chose.

CHOOSING YOUR CARDS AND CRYSTALS

The major arcana are a great place to start when looking for a talisman. Just read through the card descriptions and find one that embodies what you want to feel, change or become.

For example, if you wish to manifest fertility, you might choose the Empress or the Ten of Cups. Aces are perfect for fresh starts. Read the talisman quote attached to each card and see which mostly closely aligns with your ambition.

If you're stuck on choosing a card, the Star or the Nine of Cups are great cards for wish-granting magic!

Choose the crystal appropriate to the card, in the right colour palette or one that you are drawn to.

LAYING YOUR TALISMAN

The cross shape below is a guide for creating your own spread. You can draw it out yourself or just arrange the cards in the shape illustrated. If you really want to add some personal magic to your spread, though, why not draw your own symbol or shape that represents your intention? You can spend as much or as little time as you like, adding detail, colouring or drawing elements that infuse extra meaning to your spread.

Place your talisman and crystal in the middle.

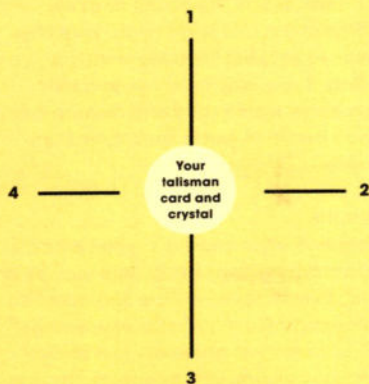
EXPANDING YOUR SPREAD

You can pull as many supporting cards as you like to help you find inspiration and guidance. The questions here are a guide but you may change them to whatever you feel will help your manifesting.

- * What message does the Universe have for me in my quest?
- * What changes do I need to make?
- * What or who can support me in this?
- * What should my next step be?

Just as with the other spreads, begin in a quiet place where you won't be disturbed and take a few moments to sit with your talisman card and crystal and think about your intention. If it's something you want to call in, imagine how you will feel if you have it, or if the change you wish for has come about. Sit with this feeling and let it mingle with the crystal and card. Every time you pick up your stone you will remember that this is the end point you want to get to.

Then shuffle the deck and pull a card for each of your questions. Journal any answers that come up. Practise saying out loud the affirmation associated with your talisman card several times a day. Keep your grid out in a safe place where you will see it regularly and each time you do, repeat your affirmation. Any time you need a reminder or a boost to lift your heart towards your goal, hold your crystal in your hand and recall the feeling of achieving your intention. You can repeat this spread as you work towards your goal to seek further help along the way and recharge your talismans.



LOOKING AFTER YOUR CRYSTALS

Crystals may already be millions of years old and most of them will outlive you! But that doesn't mean you don't need to take care of them – some more than others.

Crystals and all minerals are measured in hardness on the Mohs (pronounced Moe's, like Homer Simpson's favourite bar) scale that goes from 1 to 10. Diamond is the hardest at 10 and talc (yes, what baby powder is made from) is a 1, so that's pretty soft. The degree of hardness dictates how durable they are in terms of taking bumps and knocks.

If you keep all your crystals in one big messy drawer or box, the harder ones will scratch the others and some might even chip or splinter, so keeping them separate is a good idea. If you keep them out on a shelf you'll probably want to dust and cleanse them every now and then, just to keep them shiny and happy.

CLEANSING

Over time and with handling, crystals will pick up and absorb external energy that may be at odds with their vibration or core characteristic. Cleansing crystals isn't just about sweeping dust or dirt from them physically, but about purifying their energy so they can vibrate and

thrum without interference from low-level or negative vibes.

Some people do this monthly, some after every use, some maybe just when they notice that their crystal doesn't feel as 'energetic' as it once did.

Although this may all sound a little crazy, your crystals like to feel clean and sparkling, just like you. For instance, have you ever been ill and spent a few days in bed, and then started to feel sluggish and grubby, not just physically but mentally too? But after you have had a shower, you literally feel like a new person? It works with crystals too. Not all crystals can be showered, though, as some are water soluble – like selenite which will start to dissolve and turn into super-sharp shards if placed in water, or very porous, like opal, which can discolour and lose its rainbow if it absorbs water. If you're not sure, you can always do a quick internet search.

WAYS TO CLEANSSE

Water

A favourite method because it's quick and easy, but this is not for every crystal (see above). If you're in a hurry, give your crystal

a rinse under the tap. If you have a little more time, pop some in the bath and let the water run away before drying them off. If you're feeling super-fancy, take some out on a walk with you and wash them in a natural stream or lake. Crystals like vacations too!

Incense or smoke

A great way to cleanse stones that can't be water-cleansed is with smoke. Simply waft your incense or smoke-cleansing stick over the crystals and then sit in the smoke as long as possible. This method has the double whammy of cleansing your own aura and space, too, so if you've been feeling stressed or sluggish, then waft your smoking wand around in a little smoke dance and instantly feel purified.

Dirt

Crystals come from the earth, so returning to them to the earth for a little vay-cay is a treat. If you've been using a crystal a lot, or leaning on it heavily, it might need a longer break to recharge. Just like being in nature refreshes our souls, it works for crystals too. You can bury your stones in the garden (or a plant pot if you don't have any outdoor space) for a week or two so they can get a little rest and recreation in the dark earth. Just make sure you plant them in a well-marked spot, otherwise you might never find them again!

CHARGING

Okay, now this might definitely sound like we're crossing into 'woo woo' territory, but it really does work, so stick with it.

Once your crystals are cleansed, you can charge them with some potent magical energy.

Charging your crystals is like giving them a spa trip to revive their battery. The energy they carry is not infinite, it will fade if you don't give them a glow up.

Witches love to do this under a full Moon. Moonlight is the sun reflected back from the Moon making it extra magic. Simply placing

your crystals in the direct line of the Moon (or the light of the Sun – some crystals just love the Sun too) for a few hours will re-energize them.

A crystal, by default, is usually inert and won't rouse until it receives a command or intention from you. Every crystal has an innate talent or power which you should align with your intention, as we have outlined in this book, so get the right rock for the job. You can write your intention on a piece of paper and leave it under your crystal as it's getting a charged for an extra boost of magical energy.

USE THE CRYSTAL MAGIC TAROT TO MAKE YOUR DREAMS A REALITY

We are so pleased you've chosen this deck and are open to using tarot and crystals together as a manifesting power couple backing up your ambitions and goals. We hope you have enjoyed learning this new approach and made a few attempts at interpreting your own readings. Perhaps you have even started your own intention-setting rituals too.

This is just the beginning for you.

What you have learnt here are the basic principles of the approach. You can now add your own flourishes, ideas and rituals. Whatever brings you resolve, courage and confidence – do it. Whatever makes your ambitions feel more real and more energized – do it. Nothing is set in stone (pun intended) here; this guide is a foundation for you to build on.

**WE WISH YOU
EVERY SUCCESS
IN ALL YOUR
LIFE AMBITIONS
AND MAY EVERY
CARD AND
EVERY CRYSTAL
HERE BRING
YOU HEALTH,
WEALTH
AND HAPPINESS.**



QUICK REFERENCE CORRESPONDENCES FOR THE MAJOR ARCANAS

NO.	CARD	ZODIAC SIGN	MONTHS	ELEMENT	DAY	PLANET	CRYSTAL
0	Fool	Aquarius	late Jan, Feb	Air	none	Uranus	green aventurine
1	Magician	Gemini Virgo	late May, June, late Aug, Sep	Air and Earth	Wed	Mercury	jade
2	High Priestess	Cancer	late June, July	Water	Mon	Moon	labradorite
3	Empress	Taurus Libra	late April, May late Sep, Oct	Earth and Air	Friday	Venus	chrysocolia
4	Emperor	Aries	late March, April	Fire	Tues	Mars	lapis lazuli
5	Hierophant	Taurus	late April, May	Earth	Friday	Venus	sodalite
6	Lovers	Gemini	late May, June	Air	Wed	Mercury	tourmalinated quartz
7	Chariot	Cancer	late June, July	Water	Mon	Moon	pyrite
8	Strength	Leo	late July, Aug	Fire	Sun	Sun	carnelian
9	Hermit	Virgo	late Aug, Sep	Earth	Wed	Mercury	blue chalcedony
10	Wheel of Fortune	Sagittarius	late Nov to Dec late Feb, March	Fire and Water	Thurs	Jupiter	serpentine
11	Justice	Libra	late Sep, Oct	Air	Fri	Venus	sapphire
12	Hanged Man	Pisces	late Feb, March	Water	none	Neptune	iolite
13	Death	Scorpio	late Oct, Nov	Water	none	Pluto	jet
14	Temperance	Sagittarius	late Nov, Dec	Fire	Thurs	Jupiter	lediolite
15	Devil	Capricorn	late Dec, Jan	Earth	Sat	Saturn	amethyst
16	Tower	Aries	late Mar, April late Oct, Nov	Fire and Water	Tues	Mars and Pluto	black tourmaline
17	Star	Aquarius	late Jan, Feb	Air	none	Uranus	moldavite
18	Moon	Cancer	late June, Jul	Water	Mon	Moon	moonstone
19	Sun	Leo	late July, Aug	Fire	Sun	Sun	citrine
20	Judgement	Scorpio	late Oct, Nov	Water	none	Pluto	amazonite
21	World	Capricorn	late Dec, Jan	Earth	Sat	Saturn	turquoise

THANKS

Thank you to the team at Welbeck, my partner in crimes, podcasts and writing, Clare Gregory, the wonderful Wendy Hobson for making sense of our scribbles, and Misha for bringing this whole enterprise to life with her creative artistry and flair.

I wanted to acknowledge my allies on the ~other side~ (a growing band of brothers and sisters...) for I always feel you're with me, helping me, and encouraging me – my dad Denis Ward, Auntie Audrey, Rita, Ida Irene and Rosalind, Fred and Jack, and my beautiful fur friends Chief Brodie, Jasper and Stripe.

And, last but never least, my kind and steadfast partner in this life, Luke, my loving mum Freda, sisters Vicki and Debra, brother-in-law Alan, niece Alice, nephew Will, and the new family member on the way this year (a Leo or a Virgo, we're not yet sure).

Love you all.

KERRY WARD
@mytarotbella

Firstly, thank you to Kerry for her friendship and dedication to getting this long-time dream off the ground. Thank you to our endlessly patient and talented illustrator Misha, and to the Welbeck team for making our dream a reality.

Thank you to Dwyz, who took care of me while I wrote, and to Lauren, who took care of my business! Thank you to Pip for always being there for me and to my coven – Felicity, Yvonne, Joh and Steffi, for cheering me on and giving me truthful opinions.

Love, appreciation and gratitude to my Bonearrow customers and fans who have supported me, believed in me and enabled me to indulge my crystal obsession every day.

And to Hecate, for always having my back.

CLARE GREGORY
@bonearrow_