



The Children of Ostara Tarot



*Though the night is full of terror
And the daylight full of toil,
Still, we plant what seeds we will
Whether in barren or fertile soil.*

*As above, so below
As within, so without.*

*We reap only what seeds we sow,
Be it in good faith or in doubt.*

Copyright © Alexandria Huntington 2024.
First Edition Printing
All rights reserved.

Typeset in Althea and LongBow BB,
used with license.

No part of this book or Tarot card deck may
be reproduced in any form without written
permission from
Alexandria Huntington.

Written and illustrated by
Alexandria Huntington

Edited by Kristen Huntington

*Find more
Children of The Wheel products at
xiahunt.com*



Dearest reader:

Although plants cannot talk, if you listen, they will speak to you. If you are willing to learn, they will teach you.

They are beautiful when they bloom, but they do not bloom to be beautiful. They bloom because they must.

They begin their journey in darkness yet grow towards the light. Some are led by the sun, others by the moon. Some are fed by the rain, others by the rivers. Some will hurt you and others will heal you. But they all seek the light.

Through either fortune or perseverance, you now hold The Children of Ostara Tarot. This botanically-inspired deck is filled with Fae and Flora magick to help you emerge from darkness and fill your soul with beauty, so you too may grow towards the light.

Blessed be,

A stylized, cursive handwritten signature in black ink. The signature appears to read 'Alexandra D. Dantley' with a long horizontal flourish extending to the right.

Contents

Getting to Know	
The Children of Ostara.....	5
Elemental Correspondences	7
Family Dynamics	9
Tarot Tips & Spreads.....	11
The Major Arcana.....	19
The Minor Arcana.....	68
The Cuttings of Cups.....	65
The Petals of Pentacles	95
The Seeds of Swords.....	125
The Wreaths of Wands	155
Annotated Bibliography.....	184

Getting to Know The Children of Ostara

The Children of Ostara is a thoroughly researched, botanically inspired Tarot deck. Selecting just the right plant for each card was a labor of love requiring painstaking care and attention to detail.

Choosing the most aesthetically pleasing plant was not the primary criteria, though of course it was a consideration. As much as possible, I wanted to pair the card's meaning to the plant's folkloric and symbolic meaning, their magickal uses, elemental correspondences, healing or malefic medicinal uses, natural or biological properties, and in the case of the court card plants, even their preferred environments, and native growing locations. For a plant to be chosen to represent a card, it needed to match most, if not all of these correspondences.

You can decode this Tarot using conventional methods, as it follows in the Rider Waite Smith tradition. Additionally, this book includes guidance specific to

this deck, such as the plant meanings and botanical names for easy reference. Each card also has a unique incantation corresponding to the soul of the card and speaks to the power contained within, which you may find helpful.

Arguably, the most important mechanism for interpreting these cards is your own intuition. Your subconscious mind collects information that you may not consciously notice or understand. The subconscious does not speak through words but through feelings, dreams, and images, making the Tarot a powerful tool for meditation and introspection, as well as divination.

Before doing a reading with this deck, get acquainted with each card individually. Take the time to familiarize yourself with their names and faces. In discovering their inner truths, so will you find yours.

Elemental Correspondences

In this deck, the magickal elemental correspondence of the plant matches the elemental association of its paired Tarot card. This was a particularly important aspect of the deck for me, as someone who uses Tarot as a set of keys, or guides, for all manner of magick, including spell work. This part of the matching process is not as complicated as it sounds, and there is a logic to it. In general, it works like this:

Fire/Wand plants have strong scents and spicy flavors, display bright yellow, red, and orange colors, show an above-average fondness for the sun, and/or act as ingredients in spells for power, success, courage, lust, ambition, vitality, energy, or protection.

Water/Cup plants have delicate or sweet smells, store a lot of, grow near or grow in the water, bear sweet juicy fruits, have deep blue, violet, or pink colors, and/or act as ingredients in love, healing, friendship, attraction, glamour, and relationship spells.

Air/Sword plants have sharp scents and bitter flavors, can be used as incense, poisons or medicines, display prominent yellow, white, or light blue colors, and/or act as ingredients in spells bestowing mental clarity, rest, psychic power, awareness, mental acuity, travel, or problem-solving.

Earth/Pentacle plants have earthy, musky scents, can be used as mild-tasting but filling foods (think Wheat, Corn, and Oats), have prominent green, brown, or gold colors, are below ground-bearing foods (think root vegetables), and/or are used in spells for money, grounding, employment, prosperity, domestic-life, or physical health.

Family Dynamics

The Major Arcana: These cards form the foundations of the Tarot. They are the gods and goddesses of the deck and represent cosmic, karmic, and archetypal and universal energies & overarching life lessons.

In *The Children of Ostara*, these illustrations combine human and flora to create fae-like hybrids filled with beguiling beauty and hidden danger.

Consisting of 22 cards, the Major Arcana starts with The Fool and ends with The World. Much like the epic “hero’s journey” in literature, the Major Arcana depict the Fool’s journey from ignorance toward enlightenment.

The Minor Arcana: These cards focus solely on plants. In the case of cards two through ten, this is depicted by a specific plant growing around the icon of its suit: wand, cup, sword, or pentacle.

Aces are the essence of each suit. They represent powerful but fleeting energy in the area of life related to their suit.

Court cards are the Pages, Knights, Queens, and Kings of each suit. They often represent people in the querent's life. These cards depict humans interacting with the plant kingdom, highlighting the relationship between them.

Pages bring the seed. Pages often represent those with little social influence who nevertheless inherit social consequences. Their role is to learn, explore, and bear witness to the energies of their suit, as well as to deliver messages on behalf of those more powerful.

Knights work the land. Knights often represent the action or effort required to realize a goal in the area of life relating to their suit. They undergo trials, quests, and solve problems at the behest of others.

Queens nourish the crop. Queens support a person or project through its life cycle. They often represent those with a lot of social influence, experience, and resources at their disposal, which they then give, or withhold, to those they deem worthy, at their discretion.

Kings bring in the harvest. The Kings of each suit help to manifest an idea or project into reality in accordance to their vision. They represent someone with power and authority in the area of life indicated by their suit. Kings command, lead, and control. Their suit tells you where they get their power and how they wield it.

Pip cards: Also called “numbered cards,” they represent the common, yet important, day-to-day conflicts, decisions, and emotions we all experience. Each of the pip cards is fully illustrated with the plant(s) whose symbolic meaning corresponds with that of the card’s meaning and their elemental domains.

Tarot Spreads

One of the beautiful things about Tarot is that nothing overrules your intuition. Every reader may discover their own methodology for performing and interpreting a reading. However, if you are new to Tarot and have just started your journey, this is a good place to start.

When using the Tarot, begin by gently shuffling the cards while focusing on a specific problem or question. Next, you'll lay the cards face down in a precise order referred to as a "spread." Flip the cards over in the same order in which you laid them down.

As you gaze upon their faces, look for patterns and symbols, while noting anything that catches your eye. There is a reason your higher self is pointing you towards these specific details. Begin to form a story. This narrative guides you towards your Truth.

This section explains a few classic spreads, and a few new custom Ostara spreads you can try.

Three-card draw

One of the most beloved and well-used spreads, the three-card draw is a simple, quick, and versatile tool used by beginners and advanced readers alike.



1 – Past
2 – Present
3 – Future

1 – Situation
2 – Advice
3 – Outcome

1 – Mind
2 – Body
3 – Spirit

1 – Higher self
2 – Ego
3 – Subconscious

Five-card spread

Also referred to as "The Star," I find this spread works well for specific questions as well as general forecasts.



- 1 – Current weather (situation as is)
- 2 – Seeds I have planted (past influences)
- 3 – What will soon sprout (future prospects)
- 4 – What is unseen & germinating below?
- 5 – What can I harvest right now?

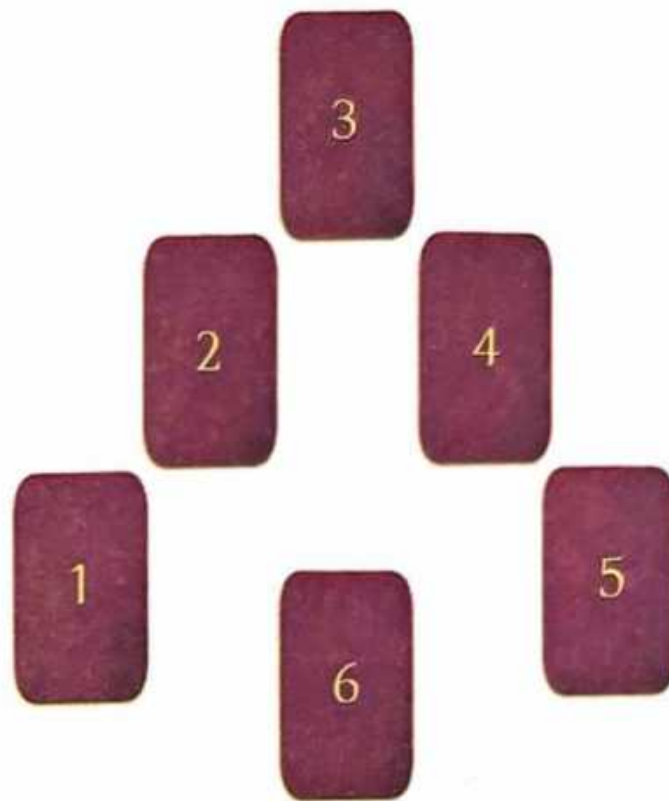
The Lovers

A good spread for looking into the strength of an existing relationship.



- 1 – You
- 2 – Your love interest
- 3 – Your connection
- 4 – Relationship strengths
- 5 – Relationship weaknesses
- 6 – Advice

The Circle of Choice



- 1 – Seedling (the choice)
- 2 – Sprout (what it looks like initially)
- 3 – Bloom (what it looks like at its peak development)
- 4 – Wilting (what it looks like as it dies)
- 5 – Death (its ultimate conclusion)
- 6 – Re-seeding (what new situations might result because of the choice)

Fork in the Forest Road




- 1 – The situation
- 2 – Choice A (general outcome)
- 3 – Choice B (general outcome)
- 4 – Pros of A
- 5 – Pros of B
- 6 – Cons of A
- 7 – Cons of B
- 8 – What to keep in mind/advice

Sowing the Seeds (Ostara exclusive)



- 1 – Seeds (what I am currently laying the groundwork for)
- 2 – Weeds (what needs to be removed for the seeds to take root)
- 3-5 – Stem (what will support my growth)
- 6-8 – Flower (what will bloom because of this)



The Major Arcana



The Fool

Dandelion (*Taraxacum officinale*)



Upon yonder hill,
Children wish into the wind.
As dandelion tufts
Brush o'er their skin.

Their hearts are ever taken
By the breeze across the sky.
They never wonder why some thrive,
While others on their journey die.

O foolish youth,
What hidden wisdom lies within?
None can know a journey's end
From whence it begins.

The Fool is a free spirit, with limitless potential and insatiable curiosity. They are naive, and their shadow self is dimwitted or illogical, overly trusting, and quite reckless.

Like the Dandelion growing uninvited in many a garden, the careless Fool drifts on the winds of whim and fancy. This dandelion fae plucks a stem and watches as the seed bloom disperses to find myriad new beginnings, unaware that the mature white puffs of this plant portend their inevitable end. So enthralled, the Fool is also oblivious to a white serpent slithering underfoot. Serpents represent that which is hidden—wisdom, secrets, and dangers alike. These and more will our Fool discover in time.

Dandelion meaning: simplicity • wishes
• happiness • survival • youth

Upright: drifting on the wind • budding beginnings • freedom • germinating ideas

Reversed: reckless • oblivious • rash
• green (as in not experienced)
• heedless

The Magician Clover (*Trifolium*)



*Dexterous fingers weave the clover crown
Counting leaves of great renown:
Four for luck, three for safety, two for love,
As The Wheel moves from below to above.*

*Creating the best patterns we can conceive,
We are limited only by what we believe.
We know much of Winter and Spring.
We learn the benefits the seasons bring.*

*Success 'tis not avoiding the weather,
'Tis to explore, discover, escape the tether.
We must toil and sweat to reap our gain,
Through sun and snow, drought and rain.*

The Magician is a card of progress. He is just beginning to understand himself and his power. He is flexible and industrious, able to take on many things at once. His shadow self, however, is a dishonest, manipulative soul. In this form, his talents may be latent and his planning poor.

Clover is a plant aligned with clever Mercury, the trickster deity to which The Magician card corresponds. Just as The Magician experiments with every element and tool at his disposal, this humble ground cover and its many leaves aid in a wide variety of magickal uses. From prophecy and protection to manifestation and the attraction of wealth or love, the tiny Clover packs a powerful punch.

Clover meaning: manifestation

- protection • attraction • luck • success

Upright: blossoming skills • cleverness
• propagation of influence • absorbing knowledge

Reversed: latent talents • wilting ambition
• incompetence • trickery & deceit

The High Priestess

Monkshood (*Aconitum napellus*)



*Beyond fields where children leap,
Violet hues lull one to sleep.
A realm betwixt dreams and dreads
Is where the High Priestess gently treads.*

*Her tender leaves and fragile roots
Are strong as the arrow the goddess shoots.*

*Whether baneful poison or holy aid,
Many foolish souls, to rest, she's laid.*

*Well-guarded are the secrets she keeps
Beside the monk who now forever sleeps.*

*Wheresoever the monkshood doth grow
Lies hidden wisdom only a few will know.*

As the bearer of ancient wisdom, The High Priestess sits upon the threshold of our conscious and subconscious. On the cover of her grimoire are two Pomegranates. One is whole and the other is cleaved open, signifying an understanding and acceptance of the known and unknown, as well as cycles of growth and decay. The crescent moon beneath her robes illustrates her dominion over the realm of dreams.

Highly poisonous, Monkshood is a plant of liminal spaces. The first sprig, said to have been pulled by Hecate from the saliva of the three-headed hell-hound Cerberus, repels malevolent spirits and grants visions as well as death. Her shadow aspect represents hidden agendas, fear of the unknown, and blocked intuition.

Monkshood meaning: invisibility

- divine communication • clairvoyance

Upright: subconscious • intuition • secrets

- mystery • ancient wisdom • The Occult

Reversed: blocked intuition • caution

- hidden agendas • unwanted attention

The Empress
Common Wheat (*T. aestivum*)



*Upon open fields of golden Wheat
Over abundant bounty she smiles sweet.
But when she wilts, we turn to weeping
Now bereft of her fertile reaping.*

*She sustains us both in plenty and need
For her children, she blesses and bleeds.
In feast and famine, her work persists
To bring forth that on which we subsist.
Knowing even with gifts of moon and sun
The seed and sickle may yield none.
That the deeds of man and locus both,
Can spoil a harvest as soon as an oath.*

The Empress represents fertility, abundance, beauty, and effortless sensuality. She finds her power in her ability to birth, nurture, and indulge in the bounty of life. With the sunny sky above, her luxurious cushions below, and the flowing river around her, the Empress lounges in easy pleasure.

She is represented by Wheat, one of the first grains cultivated to sustain civilization. For this reason, Wheat has come to represent abundance, nourishment, our collective connection to, and dependence on, the earth, and the eternal cycles of seed & sickle.

Her shadow self is overly indulgent or dependent, suffers from creative blocks, and is easily taken advantage of by others.

Wheat meaning: fruitfulness • prosperity
• sustenance • generosity

Upright: beauty • fertility • abundance
• creativity • sensuality • nurturing
• harmony

Reversed: stunted growth • creative blocks
• shame • bareness • codependence
• insecurity

The Emperor

Thistle (*Silybum marianum*)



*The strong father and protector
Serving as both warrior and judge.
Making decisions with righteous conviction,
From which he seldom does budge.*

*His arms are thorny and strong,
Keeping all intruders at bay.
Upon his crown sits a violet plume
Revealing a gentleness in his own way.*

*Be you stock of nobility or of plain,
His decree is steadfastly germane:
An unflinching heart will win the day,
As only by valor can one win their way.*



The Emperor represents the “protector” or “provider,” which is made evident by his sword and the skeletal remains of his prey. The actualized Emperor does not take pride in destruction, although he acknowledges its necessity. However, his shadow self reveals a sadistic, tyrannical ruler, enjoying the role of “destroyer” or “oppressor.”

Legend states that a group of sleeping Scottish warriors were alerted to an enemy ambush by the cries of a foot soldier who unknowingly trod upon on a Thistle. With its royal purple plume, sword-like thorns, and invasive growing habit, this prickly weed reminds us to take, defend, and fight for what is ours.

Thistle meaning: protection • bravery
• strength • pride • determination • war

Upright: authority • structure • protector
• provider • law & order • leadership

Reversed: overbearing • the tyrant king
• violence • lawful evil • domineering

The Hierophant

Salvia (*Salvia officinalis*)



Wisest sage, healing herb,
A humble but magical spice.
Teach your supplicants how to live,
To find virtue in curbing vice.

Plentiful, potent, ancient plant,
Your salve soothes outside and within.
Through the epochs and the ages
Your leaves aid mankind and his kin.

Teach us how to wield our skills,
How to love and to rightly see.
Teach the tongues that savor you
To speak not for I but for We.

The Hierophant serves us as sage and wise counsel. His traditional viewpoint enables the unity, stability, and conformity to which society can tether so that we may all grow straight and true. However, his shadow self leads us toward an over-adherence to dogmatic systems, values, or institutions that ultimately suffocate new growth.

Sage is said to bestow wisdom, longevity, good health, and guard against malefic spirits and psychic attack. In addition to being a common culinary seasoning, Sage has many healing and antibacterial properties. Sage therefore protects our physical body as well as our spirit against corruption. As an ancient Roman medical text once said: "Why should a man die, when Sage grows in his garden?"

Sage meaning: purification • wisdom
• inner-peace • reflection • domestic virtue

Upright: rooted tradition • conformity
• organized religion • community
• social wisdom

Reversed: non-conformity • suppressed individuality • restricted growth

The Lovers

Red Maple (*Acer spp.*)



*Red as the Maple tree
Is in autumn leaved,
So is the heart's blood
in the chest of lovers cleaved.*

*Where before there was but one,
now two do know each other.
Trading the simplicity of one
For the joys and woes of another.*

*As their souls tangle and part,
one begets many, and then become one.
Their songs are both foreign and familiar,
At once ceased, then again begun.*

Although The Lovers can portend external romantic union or division, it also represents the internal aspects of a single psyche, which itself may be in harmony or conflict. As within, so without. Often internal conflicts can bring about external interpersonal strife and vice versa. This is why the two figures in this card are depicted growing out of a single trunk—both a part of, and separate from, each other.

The wings on the back-facing figure represent elevated thought, spiritual ascension, and The Higher Self. The serpent coiling around the front-facing figure represents illusion and all that is unknown and perhaps dangerous. In spell work, Maple is said to attract love and prosperity, as well as bestow longevity.

Maple meaning: love • union

• romance • generosity • endurance

Upright: major life choices • harmony

• alignment of values • a balanced psyche

Reversed: disharmony • an imbalanced

psyche • trust issues • conflict • separation



The Chariot
Blue Iris (*Iris florentina*) with Red, White
& Pink Camellia (*Camellia japonica*)



Blooming for faith, wisdom, and valor,
The ideal Iris is a thrice noble flower.
Light and darkness unite without doubt,
Driven by purpose, birthing her power.

She blooms only a short while,
And yet she conquers the garden.
Her delicate beauty, a resplendent delight
Against which her armor must harden.

Her great Camellia dragons,
red hot desire, and cool moon-white
Conjoin to the conveyance of victory,
With overpowering perfection and might.

The Chariot represents the potent power of a unified psyche. It is about complete control, determination, willpower, and victory. There is no limit to the ability of one whose conscious-self, subconscious, and higher-self are united by purpose.

The Iris blooms beautifully, but briefly. So too are moments of perfect internal harmony. One must make use of this momentum while they can. The shadow of The Chariot expresses a psyche torn and paralyzed by internal division, with little hope of progress, let alone victory.

Blue Iris meaning: valor • faith

• wisdom • spirituality • grace • serenity

Camilla meanings

Red: desire • passion

White: perfection • purity

Pink: yearning • adoration

Upright: victory • control • conquest

• valor • travel • willpower • internal unification

Reversed: powerlessness • failure • defeat

• lack of direction, self-control, or focus

Strength

Angelica (*Angelica archangelica*) &
Yellow Carnation (*Dianthus caryophyllus*)



*Yellow Carnation, your joyful facade
Hides so well your meaning.
Loves lost, rejections untold,
A jealous heart left keening.
O my sweet delicate flower,
So strong yet so bereft of love.
Let Heavenly Angelica uplift you
With roots below and angels above.
Stand true in the face of sorrow,
Heal the needy, the desperate, the banned.
Have faith in a brighter tomorrow,
For all is as the gods have planned.*

Strength is about the mental fortitude needed to choose compassion over domination. This is depicted by an Angelica fae cradling a beastly yellow Carnation, lost in a fit of shameful anguish. Yellow Carnations symbolize a refusal of love. It is in suffering ego-wounds such as shame, rejection, or envy that we are most susceptible to the temptation to devolve into our lowest self.

Angelica is a plant long regarded as holy, known for granting visions of higher purpose, exorcising evil of all kinds, and aiding in emotional control. The shadow of Strength operates by throwing tantrums, placing blame, or dominating others to console one's ego.

Angelica meaning: spiritual protection

- self-control • divine messages

Yellow Carnation meaning: rejection

- envy • disappointment • sorrow

Upright: strength • confidence • courage

- fortitude • compassion • higher-self

Reversed: weakness • vulnerability

- wounded ego • shame • insecurities
- tantrums

The Hermit

Mugwort (*Artemisia vulgaris*)



Old man Hermit, disciple of the moon
Your wisdom is earned, not given too soon.
As above so below, you know it so well
The hidden will, in time, surface and swell.

What is seen and known by daylight,
Lost by night to those bereft of third sight.
Yet one truth above all is clearest to you
That no two can agree upon what is true.

O Mugwort, bent and lost in your head,
Granting prophetic visions of joy and dread.
Assist our travel from this world to the next
Help us search for a truth, unperplexed.



The Hermit represents a need or desire to retreat from the external world and find profundity and truth within. This card is an omen of introspection, seclusion, study, and deep contemplation. It is the reconciliation of ancient or conventional assumptions wisdom with personal wisdom.

In his wizened hand, a Mugwort gnome holds a glowing star. His knowledge of self enables him to grasp the heavens and summon a piece of it to earth so that he may integrate it within himself. This allows him understanding and access to even the most elusive of life's mysteries. The shadow of The Hermit is reclusive and isolating, retreating – not to gain deeper understanding – out of fear, arrogance to disguise a wounded ego, or social malaise.

Mugwort meaning: home blessings

- psychic visions & visualization • safety

Upright: introspection • solitude

- contemplation • inner guidance, journeys, or wisdom

Reversed: intellectual/spiritual elitism

- loneliness • isolation • withdrawal
- reclusiveness

Wheel of Fortune

Oak (*Quercus robur*) Ash (*Fraxinus*)

Hawthorn (*Crataegus oxacantha*)

Blackthorn (*Prunus spinose*)



Where Oak, Ash, and Thorn together grow
The musical fae world a man may know.
Where immortality and death are ever one
where neither night nor day has ever won

The passerby comes and goes in a day
Returning to hundreds of years gone away.
He might then see the illusion revealed,
The truth that mortality keeps concealed.

There is no life or death, no night or day
Just an eternal song to which life will sway.
He might smile or cry or be on his way
Knowing his lot is but his part to play.



Two serpents devour each other around a zodiac wheel, representing the cycles of life & death, growth & decay, fortune & misfortune. Behind them, branches of Oak, Ash, Hawthorn, and Blackthorn cross each other. Where these trees together grow, a portal to the realm of fae opens.

This union of magick & mundane, so often seen and felt in nature, aptly demonstrates the sacred absurdity of life around and within us. When The Wheel is up, light shatters the darkness. When The Wheel is reversed, darkness swallows the light. Fear not, for the only consistent thing is change.

Oak meaning: legacy • bravery

• endurance • nobility • strength • growth

Ash meaning: spiritual protection • wisdom

Blackthorn meaning: adversity • hardship

Hawthorn meaning: love • union • balance

Upright: good luck • positive change

• easy alignment • efforts bearing fruit

Reversed: bad luck • setbacks • delays

• disruption • unwelcome change

Justice
Black-Eyed Susan (Rudbeckia hirta)



*Black-eyed Susan was an honest maid
Diligently doing as her conscience bade.
Only good she did, but The Wheel spun
And despite her virtue she was undone.*

*Where she did rot, a flower did grow
Petals a modest, yet vibrant show.
Seeking justice, the ever-vigilant bloom
Brought light to darkness, evil, and gloom.
How we come to know guilt and innocence
Must be done despite personal dissonance.
We must endeavor to set true the scales,
So bright-eyed Susan's justice prevails.*

The Rudbeckia symbolizes justice because its bright yellow petals seem to lift its dark protruding center to the sun, representing the bringing of that which is secret, corrupt, or hidden into the light. Similarly, an ideal implementation of justice would be an obvious and impartial pursuit of truth that is accessible to all. This Rudbeckia fae holds golden scales, an allusion to the Egyptian goddess of Justice, whose feather was used to weigh a person's heart before deciding their fate. Her other hand holds a sword, signifying her ability to enforce the ideals of Justice.

This card represents virtue, law, order, and righteousness, contextualized by social acceptability. Upright, Justice is upheld, and truth prevails. Reversed, Justice may be distorted, biased, or corrupt.

Black-eyed Susan meanings: justice

- bringing darkness to light • impartiality

Upright: integrity • innocence • equality

- truth • fairness • intellectual honesty

Reversed: injustice • unfairness • guilt

- corruption • dishonesty • unreliability

The Hanged Man

Blackberry (*Rubus fruticosus*)



*Blackberry bramble by Lucifer is cursed
Hiding the best of itself within the worst.
Blackberry bramble by Brigid is blessed,
Hearing Spirit's song though cruelty's test.*

*Blackberries pain to pleasure gives,
Teaching beautiful lessons for us to live.
Three golden coins for one crown of thorn
A test, a chance, or the price to be reborn.*

*Truth is sorrow, strife, weariness too
Bringing Wisdom's perspective unto you.
When Freedom is gone, sense all but taken
Spirit compels our souls to awaken.*

A Blackberry fae dangles from rope-like vines made of his own thorny brambles. Illuminated by the setting sun, he drops three gold coins into the waters below. The Hanged Man card often appears when the taut and internalized assumptions of our world begin to warp and morph within us, turning constrictive rather than supportive. Spirit asks us to explore new perspectives, often by way of meaningful ego or material sacrifice. When the ego protests, we become stuck in our tangled inner brambles. If we can let go our materialistic assumptions, our wounded egos, our superficial virtues and comforting vices, we might be able to cut through the thicket and retrieve the tender fruits ripe with potential bursting all around and within us.

Blackberry meaning: divine love • sacred wisdom • pain • grief • weariness

Upright: confusion • subverted expectations • martyrdom • hang-ups

Reversed: new perspectives • material • sacrifice • spiritual gain • surrender

Death

Deadly Nightshade (*Atropa belladonna*)



*Oh Belladonna, Death's favorite flower.
Life, the whim of your master's epic power.
You and your ilk ever sewing and reaping,
Through sorrow, joy, laughter, or weeping.*

*In vain, we offer gold coins and sword,
Magic wand, holy grail, crown adorned.*

*You see new, old, rich, and poor alike
With nary a care your master will strike.*

*Death Belladonna, beautiful powerful bile
Remind us to make our time worthwhile.
None are known for what you will bring,
For all life must truly, to your tune sing.*

Deadly Nightshade stands underground and barefoot atop the River Styx. She clutches a skull, as trinkets from the material world fall through the portals of sacrifice behind her: wands, cups, coins, swords, and crowns. All sink meaninglessly to the bottom of the river. Ambition, emotion, wealth, wisdom and authority—once Death has come for a soul, none of these powers can keep her from claiming it.

Belladonna, also known as Deadly Nightshade, is both beautiful and lethal, representing death, silence, caution, breakthroughs, magic, and energy shifting from one plane to another. Life is full of new beginnings, but before they can blossom, the old ones must mature and die. If we can prune back the old growth, we may be reborn again as something greater.

Belladonna meaning: death • energy shifts
• emotional breakthroughs • caution

Upright: transformation • rebirth
• death of the ego • mental pruning
• catharsis

Reversed: struggle • repeating negative patterns • numbness • painful endings

Temperance
Olive (*Olea europaea*) ☽
Yellow Iris (*Iris florentina*)



Olive and Iris, victory and valor
A spirit blooms vivid as a spring flower.
Graceful yet bold, giving and receiving
Reason gets stronger by the act of believing.
Yet Irises bloom ever so briefly
It is difficult to win a victory so sweetly.
Balance, an art practiced, a skill to be won,
Its pursuit is unending, once we've begun.
Sun seems to vanish just as Moon rises
Temperance will come and go in its guises.
When we learn we too can rise after dark
Then we will know we have hit our mark.



An Olive dryad holds a silver cup aloft and a golden cup below, both overflowing into the waters before her, symbolizing the tempered mixing of opposites. One of her feet is rooted to the ground behind clusters of blooming yellow Irises; the other is poised to test the waters.

Yellow Iris symbolizes passion, valor, and messages from the divine, while Olive trees symbolize peace, harmony, flexibility, and victory. Together, they represent a state of internal victory achieved by balancing tranquility with passion, and valor with serenity.

Behind her looms the caverns of death, now awash in the light of a rising sun, next to a rainbow, the divine messenger of hope.

Olive meaning: harmony • peace • joy
• flexibility • inner-strength • victory

Yellow Iris meaning: temperance • passion
• clarity • faith • hope • valor

Upright: moderation • adjustment
• balance • inner peace • tranquility

Reversed: confusion • imbalance
• excess • discord • over adjustment

The Devil

Oleander (*Nerium oleander*)



*Despair of desire, yearning unconstrained,
The health of a soul not easily maintained.
When poison is sweet and danger so fair
Growing like Oleander, heed and beware!*

*Grace can be taken, and virtue soon lost
If we think only of pleasure, not of its cost.*

*Oleander looks kind, her petals enthrall
Her beauty's price may be your downfall.
Not all devils play dirty, nor all angles nice,
Not all pleasure is taken by sin, evil, or vice.
So carefully choose which seeds you plant,
Once a sin sprouts, it is hard to supplant.*

An Oleander dragon sits atop piles of hoarded treasure. Two yearning demons grow from the offshoots, "bound" by loose-fitting golden chains, their faces pinched in the ecstasy of agony. Like corruption, Oleander flowers grow in abundance. Like temptation, it pleases the eye as it strangles the heart. Like evil, it is invasive, quick to grow, and difficult to stop once sprouted. Planted for its seemingly low maintenance loveliness, Oleander is a dense evergreen shrub that flowers prolifically...and every single facet of it is fatally poisonous.

According to the Language of Flowers, Oleander means "I am dangerous." Just like proverbial "Deals with the Devil," one must carefully measure the risks when inviting it into one's garden.

Oleander meaning: calculated risk • lust
• disgrace • caution • illness • misfortune

Upright: moral failing • destructive habits
• self-imposed bondage • sickness of soul

Reversed: facing demons • liberation from vice or false virtue • breaking habits

The Tower

Snapdragon (*Antirrhinum majus*)



*The lightning strikes, the fire rages
All things wither by the passing of ages.
Snapdragons grow, despite any remorse
All things built fall in nature's course.*

*The explosive consequence of delusion,
Tears to be shed by eyes free of illusion.
Nothing worth having, can forever be kept
For the erosion of will has already crept.*

*The cracks have now overcome the stone
No weeping or wailing for them can atone.
We build towers like Snapdragons seed
Slow to grow and doomed to recede.*



A Snapdragon perches upon a crumbling tower, its many heads roaring as lightning strikes and forest fires rage. Snapdragons are protective in spell work, and any part worn or held will protect one from enchantment, deception, and harm, until evil passes.

The Tower indicates sudden destruction and upheaval. After allowing the slow erosion of our values and moral frameworks, our inner foundations cannot contend with the harshness of reality and consequence. The Tower, therefore, speaks to the destruction of that which is no longer strong enough to serve our highest good.

When our towers fall, often all we can do is open our eyes to the truth, protect that which is truly precious within ourselves, and allow everything else to burn away.

Snapdragon meaning: protection • grace
• deviousness • remorse • curse reversal

Upright: crumbling foundations • loss
• destruction • reaping of consequences

Reversed: blessing in disguise • denial
• controlled destruction • intervention

The Star

Lavender (*Lavandula stoechas*)



No pain is eternal, no comfort everlasting,
Light and dark, endlessly contrasting.
Yet silence is sweet and stillness serene
When discord fades and truth finally seen.

Like Lavender flowers and starry skies
There is beautiful peace in forgiving demise.
Nothing was yours for to worry or to keep,
So, release yourself into the safety of sleep.
Soon the moon will rise, and then the dawn
Hush and be still, for hope is not gone.
Within you is a seed, of goodness and grace
Needing from you only patience and space.



A Lavender fae stands alone in a sweetly scented field, under a starry sky. They pour the purest rainwater from a golden jug. The water has been enchanted to take the likeness of a benefic dragon, and its head rests gently in their open palm. One might imagine the water dragon flying off to extinguish the raging fires of The Tower card and restore the parched and barren land back to vibrant health.

Lavender flowers possess an ethereally uplifting yet gentle fragrance, renowned for its ability to restore serenity and comfort. It also has anti-bacterial properties, making it an herb of potent physical and emotional healing. Likewise, The Star represents the calm silence and the slow return of health and peace that follow devastation and destruction.

Lavender meaning: protection • grace
• peace • trust • serenity • sleep • renewal

Upright: hope • silence • moment of clarity
• help • inspiration • spirituality

Reversed: emotional injury • loneliness
• refusing help • fatigue • aloofness

The Moon

Moonflower (*Ipomoea alba*)



*See how the Moonflower unfurls
Against the darkening fear that swirls.
Within the mind, within the breast
Taking wit with reason in a nightly theft.
She needs not the sun nor his ray
To keep the unknown terrors at bay.
She allies with the moon and veil of night
She needs not her eyes; she has true sight.
Where sense is senseless, and logic distorted
The mind will surely find itself transported
To another world of ethereal grace,
There the unknown we can embrace.*

A Moonflower fairy raises the violet snake coiled around her hand up to the heavens. Behind her is a waxing or waning moon, the ocean, and two Moonflower dragons.

Snakes represent the secret, hidden, esoteric dangerous, and magical. The fairy raises the snake aloft because she, much like the veil of darkness and the moon itself, embrace and elevate the secret subconscious realm of the unknown. They sense the wisdom, inspiration, and danger teeming within this ethereal realm. The ocean represents the dark, primordial source of our own inner sea—the hidden spring of ancestral fear and power.

Moonflowers come alive and open themselves up to the moon and night, making them symbols for subconscious and spiritual receptivity.

Moonflower meaning: beauty in darkness

- mystery • intuition • inspiration
- dreams

Upright: illusion • subconscious fears & desires • irrationality • nightmares

Reversed: release of fear • magick

- imagination • esoteric understanding



The Sun

Sunflower (*Helianthus annuus*)



*Fear not the darkness for the light is here,
Unraveling our secrets, illusions and fear.
Clarity is found in the arms of the sun
Now is the time for work and for fun.
As the Sunflower blooms in obvious glory,
Now we must face the truth of our story.
Sorrow will pass, our burdens will lift
If we can look to the light, eager, and swift.
The sun feeds the Sunflower light it needs
The Sunflower feeds us its many seeds.
Cycles of truth and love and vitality,
Are also a part of our shared reality.*

A Sunflower fae raises handfuls of seeds up to the heavens and lets them fall to earth, whereupon they will radiantly bloom. Underfoot, the rooster, ever Sol's loyal herald, conquers the same violet snake once exalted by The Moon in the name of his master. Snakes represent that which is hidden, mysterious, and illusory. But the sun illuminates all things, cutting through confusion, bringing light to darkness and vitality to impotence.

With their bright colors and abundance of edible seeds, Sunflowers are symbols of joy, fertility, and prosperity. Sunflowers are also able to thrive and purify lands decimated by radiation—literally turning poison into sustenance—just as the sun brings warmth back to the land after he conquers the night.

Sunflower meaning: happiness • strength
• vitality • wishes • self-esteem
• confidence

Upright: illumination • empowerment
• joy • vitality • self-acceptance • freedom

Reversed: clouded joy • inauthenticity
• gloom • fading vitality • closed off to joy

Judgment

Angel's Trumpet (*Brugmansia candida*)



*We see the moon, we have felt the sun
Now 'tis time that our judgments begun.*

*Have we awoken, or do we still sleep?
Do we fly or fall? Laugh or weep?*

*If fate and free will do destiny form
Is the song of the Angel Trumpet forlorn?
Does Devil's Trumpet play a merrier tune?
Or are they the same, both a great boon?*

*As our souls pull our bodies ever along
We all keep dancing to the universal song.*

*The relentless river ever keeps flowing,
Feeding into the sea of our inner knowing.*

A Brugmansia fae blows on his trumpet flower, awakening and compelling the lost souls drowned in the nearby river to ascend. On the shore, a girl in white looks up with trepidation—wondering if she too is ready to ascend. Angel's Trumpet, also called Devil's Trumpet, grow large flowers that, despite producing an alluringly sweet fragrance, are poisonous hallucinogens.

Similarly, although our Ultimate Becoming calls and entices us, the path is filled with poisonous pit-falls and beguiling illusions. We must try to stay true to the judgments of our higher self, which we can interpret only by integrating our intuition with a self-actualized ego. Then will we learn to recognize our inner-call and believe in our ability to answer it.

Angel's Trumpet meaning: spiritual-growth
• clarity • resignation • intuition

Upright: spiritual awaking • judgment
• an important decision • rebirth
• elevation

Reversed: doubt • guilt • unfair judgments
• avoiding consequences • missed chances

The World
Ivy (Hedera helix),
Fern (Tracheophyta), Moss



*Maiden Ivy, with your ambitious climb,
You know to make good use of time.
Mother fern, with hopeful, humble, grace
You have ascended to your rightful place.*

*Maiden, mother, you grow and yearn.
You give, you take, you teach, you learn.
Knowing better, Grandmother Moss
Clings to earth and accepts her loss.*

*Done is done, she says to you.
With what is you learn to make do.
Though 'tis true that change will come
Still, the past can cannot be undone.*

The World represents how the journey of The Fool ultimately manifests, regardless of potential or intent. It reminds us that “done is done;” we must end one chapter before starting another.

The Ivy, Fern, and Moss fae embody the mother, maiden, and crone motif, representing the concurrently fixed and changing nature of The World. Young, ambitious Ivy leaps from one dream to the next. Fern, although more firmly rooted, still grows upward—if a bit drooped. Old Grandmother moss, however, is lowest to the earth and too experienced to leap in fits of fancy.

Ivy meaning: ambition • bonds • tenacity
• Resilience • protection • endurance

Fern meaning: hope for future generations
• humility • invisibility • ancestors

Moss meaning: luck • renewal
• connection between all living things

Upright: the integration of all things
• completion • travel • how things are

Reversed: still time to change things
• delayed travel • incompleteness • desertion

The Minor Arcana



The Cuttings of Cups

*A suit of creativity, feelings,
connection, and love;
Our emotions are from below
as much as from above.*

*The heart is fluid, and
both fearless and frightened.
As much a part of the fool
as it is of the enlightened.*

The Suit of Cups represents the
element of water, the season of
Spring, and deals with time in
increments of months.

An expressive suit that rules the
heart and represents the water
signs Cancer, Pisces, and Scorpio.

The themes of this suit are
emotions, connections, love,
creativity, feelings, relationships,
and intuition.



Ace of Cups
White Lotus (*Nymphaea lotus*)



*As White Lotus grows in murky depths,
The heart holds both range and breadth.
Wisdom grows where love roams free.
To what the heart opens, The Eye can see.*

*Forever, does the enlightened ensure
That their heart is virtuous and so pure.
For acumen, courage, and wealth do spring
From hearts pristine even in ponds unclean.*

*Gentle serenity and turbulent tide
Within the heart both do reside.
If we can calm our inner sea,
Then we can learn to set ourself free.*

The Lotus flower is a symbol of purity, enlightenment, spiritual growth, and rebirth. This is because her roots often rest in murky waters, and yet the flower that rises above them is always a pristine beauty.

Holding a silver chalice that overflows with surreal white waters, while surrounded by murky green waves, a Lotus nymph rests. She and her prize represent our emotions and subconscious, bubbling up from the darkest roots of ourselves—producing something that is capable of both guiding and consuming us. Do the contents of her chalice bring madness, eternal youth, enlightenment, or something else entirely? In its reversed position, she can signify an inability to express oneself, repressed or uncontrollable emotion, or numbness.

Lotus meaning: spiritual protection

- self-control • divine messages

Upright: overwhelming positive emotion

- new relationships • new feelings

Reversed: overwhelming negative emotion

- repressed emotion • unrequited love

Two of Cups

Catnip (*Nepeta cataria*)



Catnip sways while kittens play
As dewy-eyed dawn brings the day.
Amity fills us like the sun fills the sky,
New friendships await those who try.
Bonds bloom in all gardens well kept,
Uniting all hearts that are subject.
Good-natured friends breed prosperous joy,
When they do not with our heart toy.
Catnip brings fun, friendship, and warmth
Cat-like contentment it does bring forth.
Attracting us to one with whom we can see
Eye to eye, heart to heart, you to me.



Two ladybugs meet, resting themselves upon two sprigs of Catnip, which burst auspiciously with purple blooms. Ladybugs symbolize friendship, luck, and protection. Catnip symbolizes attraction, love, beauty, happiness, and the calming of hysteria.

Often combined with Rose petals and used in love spells, Catnip fosters connection, affection, and friendships. This effect is especially obvious when it occurs between witches and their feline familiars—but Catnip can help foster the budding of friendly connection between people as well.

Those who warm Catnip in their hand and then hold the hand of another will ensure a strong and lasting relationship with that person. Carrying Catnip in your pocket is said to help attract a lover...or at least a friendly cat!

Catnip meaning: love • beauty

• happiness • attraction • psychic bonds

Upright: budding new partnerships

• union • attraction • harmony • equality

Reversed: imbalance • incompatibility

• abuse • betrayal • break-ups • fights

Three of Cups
Sweet Pea (*Lathyrus odoratus*)



*We three blooms, thrice in joy and light
Dancing alongside, we bask in delight.
Yet as numbers grow, tempers may rise—
For one cannot share and keep a prize.
Our twisting vines need space to grow,
And our needs have brought bonds low.
Silly to start but stern to finish
Scarcity may make friendships diminish.
Still, to have so many upon which to count
Spills joy in a heart like water from a fount.
Better to have too many than not enough
Better to try at love, even if rebuffed.*

Three spring Sweet Peas sway together underneath the bright noon sun. Sweet Peas represent friendship, chastity, purity, delicate pleasures, harmony, social responsibility, and comfort. Sweet peas help attract new friendships when carried in the pocket. Because their common name is a popular term of endearment, giving a Sweet Pea flower to someone nurtures the bond between giver and receiver, and expresses gratitude for their friendship.

Unlike Catnip however, Sweet Peas are symbols of purity and chastity, ensuring that this bond will remain platonic, and they can therefore act as a gentle rebuff of romantic intentions as well. They help ease tensions between feuding parties and represent a need to consider social responsibility.

Sweet Pea meaning: friendship • chastity
• social responsibility • harmony

Upright: community • relying on friends
• confiding in others • support • parties

Reversed: an affair • keeping secrets
• gossiping • jealousy • awkwardness

Four of Cups

Weeping Willow (*Salix babylonica*)



*Down beneath the willow tree,
Tears that fall in sadness or glee,
Are wasted not for she shall see
Into your heart and set you free.*

*As tears fill the pond at her roots,
Countenance falling as a star shoots.
Never you know what you may miss
Pining away after the dream of a kiss.*

*She says that your wishes wax and wane,
Just as clouds gather and part with rain.
She will teach us what pain we can abide
And help us to let all others subside.*

The Weeping Willow is famous as the tree under which fairy tale maidens sit beneath and weep bitter tears of wanting. Yet Willows offer sage, if silent, comfort. Better still, in many tales, she often takes those wistful daydreams or innermost wishes and grants them, or else delivers magickal aid to the protagonist.

In the mundane world of reality, several varieties of Willow bark possess the ability to relieve physical pain and make an especially helpful remedy for head and back aches. This therefore links the Weeping Willow to pain relief, both physical and emotional. Upright, we have enough to feel sated, and so have the luxury of looking beyond our basic needs. Reversed, this card may indicate time wasted on wishing and blinding ourselves to real opportunities in so doing. It may also indicate an inability to feel satiated or soothe the pains of desire.

Willow meaning: melancholy,
• mourning • wishing • healing

Upright: considering opportunities • release from pain/desire • satiation

Reversed: mourning • aimless wishing
• dissatisfaction • stagnation • ungrateful

Five of Cups
Hyacinth (*Hyacinthus orientalis*)



Love lost; love gained
Beauty admired and then disdained.
If loving desire is but a game
Then let our hearts take careful aim.
Hyacinths of purple and of white
Bear solemn witness to desire's plight.
The first speaks of loss, regret, and grief
The second for prayers and hopeful belief.
Ever does desire wax and wane
Ever is love both sacred and profane.
Either way it blooms, and so will wither
Love is like trying to hold onto a river.

A wounded skull cries rivers beside overly large Hyacinths. In Greek mythology, Hyacinthus was a mortal prince desired by both Apollo, god of the sun, and Zephyrus, god of the wind. He rejected Zephyrus in favor of Apollo and so the jilted god conjured a fierce wind while the lovers played a game of quoits, resulting in a fatal wound to Hyacinthus's head. Where Apollo's tears fell, the purple Hyacinth grew out of sorrow. Consoled by its beauty, the next flowers that bloomed were white.

While purple Hyacinths represent loss, and white ones represent hope, in general, Hyacinths symbolize games, recklessness, and competition. True to the myth, games of love and desire are of the highest stakes wherein the elation of victory is equal only to the sorrow of defeat.

Purple Hyacinth meaning: sorrow • grief
• jealousy • remorse

White Hyacinth meaning: prayers • hope
• beauty

Upright: loss • desires unattained • grief
• mourning • envy • remorse • regret

Reversed: pettiness • desires fulfilled but unsatisfying • melodrama • overreactions

Six of Cups White Lilac (*Syringa*)



*Gentle Lilac, like love's first kiss
With a simple ignorance full of bliss.
In a world where all was as it seems
Tomorrow and yesterday were but dreams.
Yet we know well what is remembered
Is but one reality dismembered.
Accuracy lost among its parts
Tainted by brokenly jaded hearts.
If good or ill, we think we will glean
Then good or ill is all that is seen.
Our cups are filled, we pass them along
Truth, like Lilac blooms, a fleeting song.*



Gentle blooms of white Lilac cluster around ancient rocks worn by time and carved with intricate symbols made by those who have long ago left this world. White butterflies float by what remains of their stories.

White Lilac symbolizes the sweet memory of first love, and so represents nostalgia and the beautifully tender ignorance of youth. Yet, our caretakers, and the generational cycles of care or trauma we inherit from them—for better or worse—heavily inform our childhoods, and the memories attached to them.

The carved rocks represent our past, immutably set in stone. The white butterflies represent both our inner child, as well as our ability to transform and break old destructive cycles, and create new, more constructive ones.

White Lilac meaning: forsaken memory

- youth • innocence • first love
- reincarnation

Upright: the simplicity and beauty of youth

- memories • nostalgia • childhood

Reversed: stuck in the past • negative generational cycles • childhood trauma

Seven of Cups
Cowslip (*Primula veris*)



Coral snake, King snake
Your subtle art is hard to shake.
Fairies love your tricks and schemes,
For they know nothing is as it seems.
When a red scale touches a black,
It is safe for Jack to turn his back.
If a red scale touches a yellow,
This serpent will surely kill a fellow.
Where golden Cowslips sweetly grow
Ways of fae and serpent you'll know.
And if their treasure you should find,
To truth and reason it turns you blind.

Cowslip grows where fairies hide their treasure. As tempting as these stashes are, nothing with the fae is as it appears, for the beautiful often hides the beastly, and the beastly the benign. The integrated paradoxes of desire and fear, fantasy and reality, blur intimately within this realm, depicted by the simultaneous night rain and morning sun.

Also representing the power of cloaked reality are the similar King and Coral snakes weaving around the skulls. While the Coral and King snake look very similar, the Coral snakes are highly venomous while King snakes are not. We must be equally judicious when distinguishing between the real from the fanciful, our needs from our desires, and the baneful from the benefic. These things may be different then they appear.

Cowslip meaning: treasure-finding
• youth • doom • glamor • death ☺
rebirth • fae-magick

Upright: fantasies • desire • visions
• magick • wishes • temptation

Reversed: illusion ☺ lies • delusion
• escapism • hidden danger

Eight of Cups

Bleeding Heart (*Lamprocapnos spectabilis*)



*Firefly my heart bleeds for you
Your sweetness shines through all you do.
Traversing darkness, near and far
Searching for some distant star.
I hope you find her in some lonely dream
More real than what is in daylight seen.
She speaks in a way you feel, not hear
And in your heart, you hold her dear.
All Bleeding Hearts bloom for you.
All know your journey is what is true.
It is not about what star you seek to find
But instead, what light you leave behind.*

A lone firefly sits upon a sprig of Bleeding Hearts hanging over a pool of water. It gazes up at the full moon against a night full of distant stars.

This card is about searching for inner truth, meaning, and purpose. Often, it regards situations wherein we must abandon false gods, idols, lovers, beliefs, or friendships, and come to terms with the nature their glammers, which had kept us distracted and imprisoned. By letting go of the fake, materialistic, or toxic, we can then search for lasting and meaningful forms of fulfillment, often rooted in our own inner light or spirituality. It is a necessary but lonely path. Although our heart may bleed for what was lost, a part of us knows we can no longer dwell in an ignorance already dispelled. We must move forward.

Bleeding Heart meaning: sensitivity

• letting go • rejection • detachment

Upright: pursuit of spiritual truth • letting go of attachments • moving on • catharsis

Reversed: love lost • clinging to unhealthy attachments • loneliness • abandonment

Nine of Cups
Trillium (*Trillium erectum*) ☽
Irish Moss (*Chondrus crispus*)



*Trillium I am glad to see
For yours is joy times three.
Love, wealth, and modesty
You bring treasures of honesty.
To take you from your destined plot
Is to render your value all for naught.
Like the wild beauty of sea, or wind
Hearts desiring to possess have sinned.
Your beauty is to hold, not keep
Within the breast, the seeds you reap.
The truest of treasure is found
Within, without, and all around.*

The early morning light calls three giant Trillium to rise from their forest floor. Above them hangs the masterful remnants of a spider, her silver tapestry shining proudly. Below them, a river runs over shining fairy-treasure. Irish moss covers the other side of the brook.

Trillium is a beautiful wildflower, but plucking it often results in severe damage to the plant. Thus, Trilliums are symbols of modest beauty and spiritual oneness, as one must appreciate it for what it is, where it is, and then leave it be.

Irish moss symbolizes luck and wealth, and together these two plants represent the true wealth of emotional satisfaction that comes from loving and accepting what you have, and who you are, in the moment.

Trillium meaning: modest ambition • birth
• oneness • awakening • attracting love

Irish moss meaning: luck • wealth
• protection

Upright: fulfillment • internal & external harmony/prosperity • satisfaction

Reversed: overly materialistic • falsely spiritual • unearned pride • fleeting fortunes

Ten of Cups
Rose (*Rosa spp*)



Gentle Rose blooming sweet
Your scent and beauty a delightful treat.
Yet what pain your thorns will bring
To any careless trampling thing.
You know the fight that must ensue
So, keep close all that is dear to you.
You know what joy there is to take
And what for it we must forsake.
None would know it, to look at you
Vibrant and perfect in all you do.
They do not see your rusted leaves
Or the blood those beauties do deceive.

The Ten of Cups represents the so called “happily ever after” we dream of and fight for. Like a Rose, its beauty is a perfect vision, its scent sweet and alluring. Also like a Rose, it is riddled with thorns, difficult to maintain, and prone to disease.

This is the last card in the emotional Suit of Cups, and so it is time for us to “close the deal.” Either this is the outcome for which we have fought, searched, and sacrificed and we can celebrate the making of our perfect garden beds. Or it isn’t, and we must begin anew. Regardless, we must come to terms with what it is.

Purple rose meaning: special/magical love
• enchantment • true love • glamor

Red rose meaning: passion • lust • courage

Peach rose meaning: union • agreement
• ideal • closing the deal • gratitude

White rose meaning: purity • protection

Upright: happy conclusions • domestic bliss • dreams worth fighting for • the goal

Reversed: fighting to maintain a fantasy/appearances • domestic strife • toxic cycles



Page of Cups
Crocus (Crocus vernus)



*Crocus blooming in early spring,
What a hopeful sight you bring.
What winter takes, the spring returns,
Love begins again as The Wheel turns.
The lover's prize, the poet's muse,
You bring such delightful news.
The cold is done, the warmth has come,
The fears of night and day undone.
Playful light and gentle too,
We should all rise as eagerly as you
To hold the joy of each night and day,
To run and jump and love and play.*

A young woman dances playfully with a Crocus flower in her hand. She stands on a bridge with a flowing river beneath and the waxing moon above.

Because the Crocus is among the first of the spring flowers to bloom, it symbolizes rebirth, youthful joy, and the ability to find love and happiness again after hardship and heartbreak.

Similarly, the Page of Cups can also act as a messenger of love and youthful joy. It often represents someone young, or “young at heart” who is sensitive, artistic, and full of idealism. They often lack the wisdom, skill, or influence to make use of their budding talents and so require guidance.

Crocus meaning: return of love • visions • youthfulness • mirth • support • play

Upright: messages of love • exploring emotions • an emotionally sensitive student, youth, etc.

Reversed: messages/messengers of heartbreak or sadness • a delusional or overly emotional student, sibling, or apprentice • fears and nightmares

Knight of Cups
Columbine (*Aquilegia*)



*So simple it must seem
To primp and shine and preen.
All to ensure the arrow does its part
To hit the tender, unassuming heart.
Columbine, why hang your bashful head?
Are you ashamed by what the lovers said?
Love truly does conquer all,
It is reason's surest path to fall.
Let us play the game of love and loss.
Let us bet our hearts upon a dice's toss.
It lifts our spirits, at least for now,
To play at love even if we know not how.*

A young, mounted archer attempts to slay a magnificent water dragon. She and her white steed wear fabrics decorated in floral patterns of Columbines and leap over a chalice filled with their emblematic flower.

Columbine represents love and folly, faithfulness and adultery, as well as a desire to win. As a knight of the emotional realm, this card therefore represents someone who acts on their feelings, often “wining” the hearts of others as though they were prizes. While not necessarily malicious, they seek to solve emotional problems, often using pretty words or romantic sentiments. Unfortunately, this can sometimes involve showy but superficial displays of affection, or lovely-sounding but improbable promises.

Columbine meaning: resolved to win • folly
• courage • cuckoldry • dreams • visions

Upright: emotional problem-solver
• displays of love • acting on feelings

Reversed: fickle romantic prospects
• someone who is too good to be true

Queen of Cups

Apple Blossom (*Malus domestica*)



*Like Apples ripening on the tree,
Not all that goes into it we can see.
Many things flow ever in and out
Like love and courage, fear and doubt.*

*The delicious Apple tempts us so.
We wish its secrets were ours to know,
We wish its fruit was ours to taste,
We wish it to grow and ripen with haste.*

*Yet Apples will grow so slow and sweet.
And despite many seeds falling to defeat
The ones that will bud, grow, and flower
Come from the careful cultivation of power.*

A woman sits beneath an Apple tree laden with fruit. She holds an ornately decorated chalice with a heart at its center. The outer pattern of her kimono depicts blooming Apple blossoms.

Apples have a plethora of folkloric history, from being the icon of temptation and sin, to domesticity and love. Prime among their magikal uses is as ingredients in love, fertility, health, and beauty/glamour spell work.

Indeed, the Queen of Cups is one who can both glamour and nurture—compelling the emotionally withered back to bloom and providing the necessary support to buoy one across treacherous emotional waters. The danger of this is in their ability to withhold such supports at their discretion, leaving one to sink if they so choose.

Apple Blossom meaning: emotional purity
• inner-health • love • self-care • fertility

Upright: a sensitive supporter or nurturer
• emotional healer

Reversed: someone withholding emotional support • emotional fatigue

King of Cups
Cherry Blossom (*Prunus serrulata*)



*Cherry Blossom, bloom only to die.
You fall so gracefully as if to fly.
Surely you feel no shame or doubt,
No loss or sense of going without.
We learn from this that a beauty true
Cannot be taken away from you.
It is kept in the secret tides of heart
Never from us, far apart.
Spring and Winter, Summer and Fall
You bloom for you; you bloom for all.
We see your ways and know we too
Each have our lots and loads to do.*



A king sits serenely beneath a Cherry Blossom tree, collecting the fallen flowers in an ornate chalice. The Cherry Blossom represents death and renewal, as well as the wisdom and inner peace that comes from the knowledge and acceptance of life's cycles.

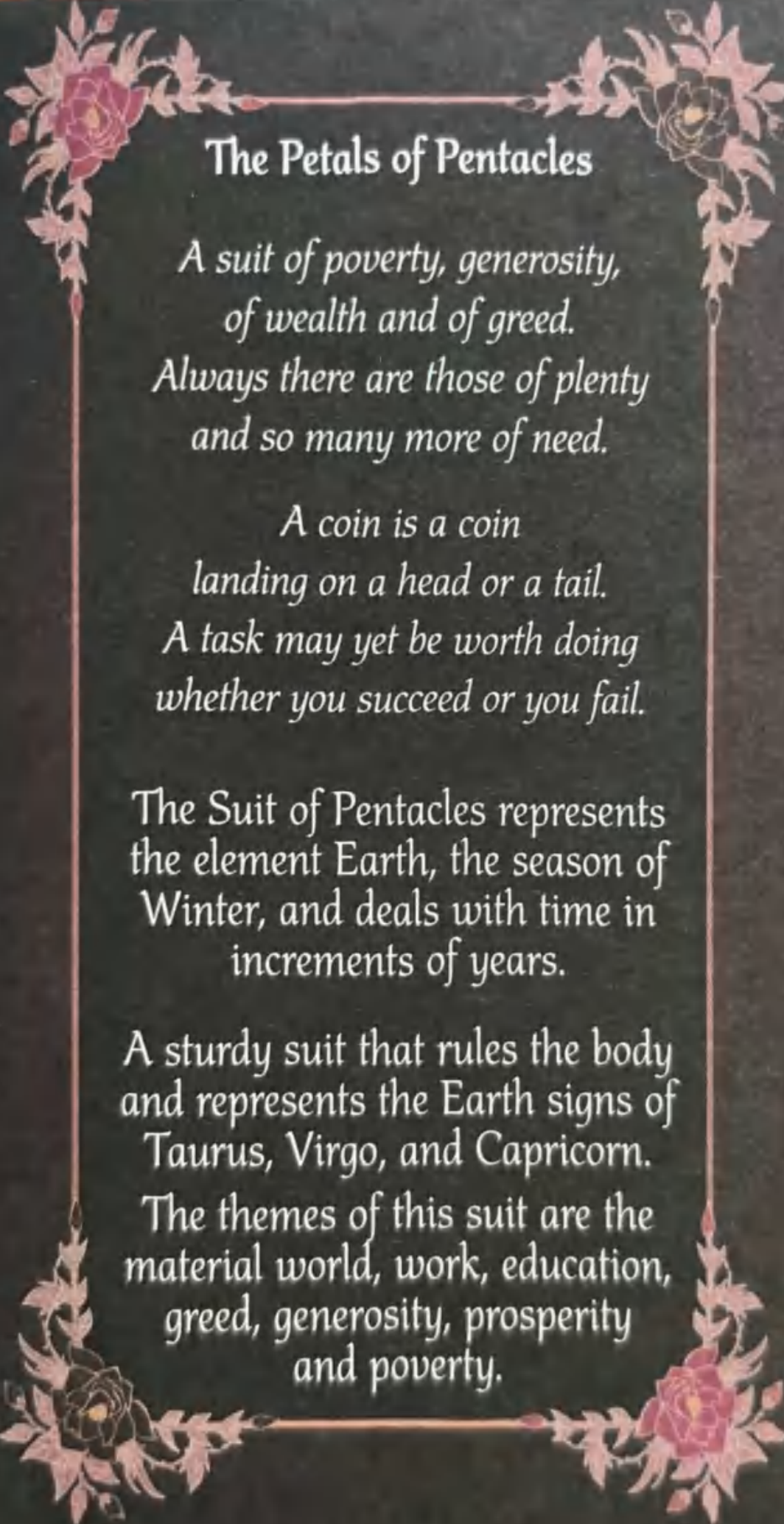
The King of Cups likewise represents someone with high emotional intelligence, who is deeply in tune with the ebbing and flowing of the internal world. He will use this understanding, and his connection with others, to manifest his vision. The King of Cups can thus appear as a therapist, priest, or anyone who makes his way in the world by navigating the emotional, spiritual, or subconscious waters of his heart, or the heart of those around him.

Cherry Blossom meaning: wisdom • peace
• knowledge • beauty • harmony
• renewal

Upright: someone who uses emotions or relationships to manifest their vision
• one with emotional authority/emotional intelligence

Reversed: emotional manipulation
• one with unchecked emotional biases





The Petals of Pentacles

*A suit of poverty, generosity,
of wealth and of greed.
Always there are those of plenty
and so many more of need.*

*A coin is a coin
landing on a head or a tail.
A task may yet be worth doing
whether you succeed or you fail.*

The Suit of Pentacles represents
the element Earth, the season of
Winter, and deals with time in
increments of years.

A sturdy suit that rules the body
and represents the Earth signs of
Taurus, Virgo, and Capricorn.

The themes of this suit are the
material world, work, education,
greed, generosity, prosperity
and poverty.



Ace of Pentacles
Honesty (*Lunaria annua*)



Oh, beautiful Honesty,
Magnanimous silver dollar tree,
Abundance within yields riches and clout,
All can prosper with nary a doubt.
I take your seed, this precious gift.
I feel the poverty around me lift.
In the gentle womb of the Earth,
May all wealth grow and gain in girth.
So, money tree send wealth this way.
Make money come and come to stay.
Be mine in honesty and harm no one,
This is my will; my will be done.



An Honesty plant fairy clutches a giant silver coin. Honesty (also called Money or Silver Dollar plant) produces round, semi-transparent seedpods that look like coins. This accounts for its use in spells of wealth and attraction, as well as its popular names. The Honesty plant also promotes sincerity, and indeed, one does hope to come into wealth honestly!

An interesting folkloric attribute is its ability to repel monsters. This may also be due to the moon-like appearance of the seedpods, as the moon is associated with many monsters and protection against them. Regardless, this is a prime metaphor for the need to protect oneself from the psychic “monsters” of envy and greed, which tend to trail along the heels of the wealthy and prosperous.

Honesty meaning: attracting money

• repelling monsters • honesty • prosperity

Upright: new resources • new financial, occupational, or educational opportunities

Reversed: stagnated cash-flow • decrease in resources or opportunities • new debts

Two of Pentacles
Quince (*Cydonia spp. speciose*)



*Merry we meet, and merry we stay
Under the Quince, as blossoms sway.
There will be time for work and for play,
Time to live, and within Earth to lay.
Under the Quince, we planted our seeds,
We grow together despite our needs.
Is it here where we put down our roots?
Is it here where we will see new shoots?*

*Sun and moon, soil and air,
We till and we toil, we love, and we care.
Together we start, so together we'll end
Together in union, we will our time spend.*

Two sprigs of Quince grow fruit and flower simultaneously, as behind them the sun and moon share the same sky. The Quince plant represents union and marriage, and especially the balanced union of the so-called masculine and feminine energies within a single psyche.

In alchemical lore, this sacred union was paramount, for it was only through the merging of opposites (male and female, hard and soft, receptive and projective, etc.) that the legendary Philosopher's Stone came to be.

Similarly, the Two of Pentacles speaks to the need for harmony between the internal and external environments to provide the optimal growing conditions for our ultimate success. This often means balancing our relationships, material resources, as well as our schedules.

Quince meaning: unity • happiness
• balance of projective and receptive energy

Upright: finding material/work-life balance
• juggling growing prospects

Reversed: imbalance • poor work-life balance • unstable habits or environments

Three of Pentacles
Queen Anne's Lace (*Daucus carota*)



*Happy little worker bee,
Your magick is plain to see.
You and your busy hive
Keep flowers and fruit alive.
I wonder if you each can tell
What one cannot do, many do well.
I wonder if the Queen Anne's Lace
Blooms just to meet you at your pace.
You and your precious flower.
Share a most spectacular power.
Each working with their lot.
Each integral to life's plot.*

Three bees work in harmony atop a Queen Anne's Lace, as below, its roots create carrots. The Three of Pentacles is about individuals working within a group to accomplish goals that are beyond any individual alone. Few know better the power of collaborative productivity than the bee. Because Queen Anne's Lace is a member of the carrot family, and carrots are popular motivational treats for beasts of burden, this plant also symbolizes goal setting, employment, and hierarchy.

Legend states that a friend once challenged the skillful Queen Anne to sew a lace as fine as these flowers. In so doing, she pricked her finger, and her blood forever colored the center of these delicate flowers. Thus this flower represents industriousness, taking direction, and fine handiwork.

Queen Anne's Lace meaning: goal-setting
• sanctuary • organization • creative skill

Upright: collaboration • employment
• natural or well-functioning hierarchies

Reversed: unclear goals or hierarchies
• poor/mismanaged collaboration

Four of Pentacles
Alfalfa (*Medicago sativa*)



*Alfalfa sprouting wild and free,
Making enough food for you and me.
And when we look upon their plenty
Whose belly gets full and whose is empty?
Was it not the sun, the rain, and the soil
That raised the sprout from darkened toil?
Did not the weather, worms, and bees too
Each have their own part to do?
Yet we put the crop behind a fence
That keeps out even common sense.
That many may help a thing to grow,
Yet the powerful reap what others sow.*

A scarecrow vigilantly guards his cultivated fields of Alfalfa, as hungry crows fly away frustrated.

In spell work, Alfalfa can ward against financial misfortune, as well as help one to attract and keep their wealth. This belief likely comes from its use as feed for livestock. As livestock plays an essential role in agrarian prosperity, Alfalfa has come to symbolize sated hunger and the attainment and sustainment of affluence.

Agriculture is the growing and management of natural resources to sustain civilization. However, a facet of this, by necessity, is deciding how, and to whom, those resources are distributed. This card likewise implies that you have gained some financial ground and now must try to conserve it without greedily hoarding it.

Alfalfa meaning: protects against financial misfortune • money • satiation

Upright: control over resources • growing wealth • frugality • stability

Reversed: greed • hoarding resources • miserly • moral poverty • scarcity mindset

Five of Pentacles

Cypress (*Cupressus sempervirens*)



*Cypress tree, ever crying
For a world that is ever dying.
Loss so keenly felt it tends to stay
Through the night and into the day.
If your eyes are always with tears wet,
If your mind in worry is always set,
Then your world will always wilt away,
Regardless of what wealth could stay.*

*Cypress tree, if only you knew
What glorious wonders could come true
If you left your sorrow and looked ahead
To see what could rise from the dead.*

Five Cypress trees struggle to endure a frost, growing beside a crumbling wall and a broken wheel stuck in thorny brambles. The crumbling wall represents the collapse of fortitude, while the broken wheel represents cycles of poverty and poverty mindsets.

In Greek mythology, Cyparissus is a mortal lover of the god Apollo. When Cyparissus accidentally kills a beautiful stag, which Apollo gifted him, he is so overwhelmed with grief that he declares his tears will never stop. Apollo then turns him into a Cypress tree, which forever “cries” tears of sap from its bark.

The Five of Pentacles often represents a scarcity mindset, wherein we, like Cyparissus, fixate on our losses (real or perceived) so intently that we are unable to see or enjoy any prosperity we might still have.

Cypress meaning: grief and comforting the bereaved • despair • sorrow • mourning

Upright: financial worries • loss or fear of loss • scarcity • poverty • cynicism

Reversed: comfort • getting help • hope • financial relief • unwarranted worry

Six of Pentacles

Honeysuckle (*Lonicera ciliosa*) ☽

Mistletoe (*Viscum album*)



*Mistletoe means a cheerful gift
Prompting kisses to mend a lover's rift.
But its multitude of gifts are not free,
For as it grows, it kills a tree.*

*Honeysuckle is a cheerful vine,
It gives sweet nectar all the time.
Its sweetness makes temptation swell
And it gains from giving just as well.
Yet she too can grow over-zealously.
And anyone can gift contemptuously.
So food for thought, who stands to gain
If one person's pleasure is another's pain?*



Both Honeysuckle and Mistletoe creep around the same tree. These plants depend on the tree to support them, yet Honeysuckle provides sweet nectar for pollinators, while Mistletoe is a poisonous parasitic plant that drains the life from its host.

While the Six of Pentacles is a primarily positive card, indicating acts of generosity, it also asks us to examine the intention behind those same acts. Some give out of kindness and ask for nothing in return, like the tree. Some give back what they can to mutual benefit, like the Honeysuckle. Some, however, only take parasitically like the Mistletoe. It's important to ponder: When you give, are you doing so freely? When others take from you, are they taking sustainably?

Honeysuckle meaning: bonds of love
• generous affection • devotion • wealth

Mistletoe meaning: kiss me • luck
• protection • difficulties • hidden danger

Upright: generosity • giving/receiving sustainably • gratitude • support • aid

Reversed: giving with strings attached
• taking parasitically • exploitative aid

Seven of Pentacles

Gourds, esp. pumpkin (*Curcubita spp.*)



*Tricks and treats and best laid plans
May take or give what is in your hands.
Will the forthcoming frost pass over you?
Or will it all your best-efforts undo?
All our work, toil, and careful care
May yet bring some fruits to bare.
But who can say when all is told
Why some efforts avail, while others fold?
Still, we must plan as though we know
For this we can control, unlike the snow.
Only Father Time can tell us in the end,
Which backs will break & which will bend.*

Someone has left a garden hoe abandoned in a patch of gourds as an unexpected frost begins to develop. Gourds have a history of warding against evil and misfortune and are associated with longevity. The toughness of their skin when dried allows one to hollow them out and use them as tools, such as containers (protecting the longevity of other foods) or drums (musical interments commonly used in spiritual rituals).

The Seven of Pentacles is about the maintenance, diligence, drudgery, and careful planning required to sustain material growth. Hardy as gourds are, even they require careful cultivation. And even then, the weather may yet undo our careful work. This card reminds us to hope for the best, prepare for the worst, and leave the rest to Fate.

Gourds meaning: abundance • protection
• endurance • longevity • harvest • rebirth

Upright: contingency plans • hard work
• maintenance • investing time/resources

Reversed: unforeseen/uncontrollable factors
• plans gone awry • poor planning • bad investments

Eight of Pentacles Oat (*Avena sativa*)



*The key to successful cultivation
Is in the glad pursuit of information.*

*And once we know the theory best
We must put our knowledge to the test.*

*We will see which stocks will rise
And which will wither into their demise.*

*We will learn and test forever on
A sharpened skill is always worked upon.*

As sure as Oat will sate a stomach's need,

The craftsman's hands have their greed.

*Always there is more to learn and know,
More to seeds to plant, more skills to grow.*

An Orb Weaver spider sits proudly atop her masterwork, as the sun shines upon a stock of golden Oat. Oat was one of the first crops humankind cultivated to feed and sustain civilization. The transition from hunter-gather societies to agrarian ones was not quick, nor easy. It took generations of careful study, experimentation, and observation. As we endeavored to master the land, so too did we find the need and ability to master ourselves, and so culture and the arts were able to grow in earnest. This widened humanity's breadth of skill exponentially in virtually all fields of known arts and sciences.

Similarly, the Eight of Pentacles is about furthering one's study or career, and the desire to excel by way of cultivating and mastering one's skill, craft, or art.

Oat meaning: the soul of music • beautiful voice • prosperity • cultivation

Upright: cultivating a skill • mastery
• study • craftsmanship • higher learning

Reversed: poor work-ethic • laziness
• a novice understanding • unskilled work



Nine of Pentacles Tulip (*Tulipa spp.*)



*Tulips bloom in perfect grace
Knowing always of their place.
To swell with the budding spring,
And of warmer days ahead do sing.
Pink petals portend a perfect lover.
Yellow predicts loneliness like no other.
Yet in wealth and beauty purple rises,
Telling of love and earthly prizes.
Indeed, keeping tulips in the garden
Compels the heart to fill and harden.
For to seek a love as perfect as they
Will leave one lonely many a day.*



This card features purple, pink, and yellow Tulips blooming before an eight-pointed star. When Tulips first arrived in the Netherlands, they created an economic frenzy referred to as "Tulip Mania."

Allegedly, some were so enamored with the Tulip as a status symbol that they actually sold their land to afford them. Giving a tulip to a lover therefore served to display the "perfect worthiness" of the recipient as well as the financial desirability of the giver.

Thus, Tulips symbolize wealth, perfection, and ardent love. So too does the Nine of Pentacles indicate material gain, prosperity, security, and financial independence.

Reversed, it may indicate the cost of such self-sufficiency, which can be a lonely heart, and feelings of entitlement to, or the seeking of, unattainable perfection.

Tulip meaning: wards against poverty

- ardent love • opportunity • advancement
- adjustment

Upright: financial independence • quality control • self-satisfaction • self-indulgence

Reversed: independent but alone

- perfectionism • sterility • dependence

Ten of Pentacles Corn (*Zea mays*)



*Corn, Persimmon, Apple, and Pear,
May all endeavors bear fruits as fair.
To toil and work in the days of your prime,
Makes your later years a feast divine.*

*Horn of plenty for eons have fared,
As symbols of wealth meant to be shared.
Now rejoice, enjoy, and rest in the shade,
Watch rising sprouts as old flowers fade.*

*Collect tokens and wisdom as you grow.
Share what you have, say what you know.
Eat your heart's fill, pass down the rest.
For what you have to give shows your best.*

A cornucopia overflows with Corn and fruits atop a table laden with gold coins and precious gems. As a staple food in many cultures, Corn is heavily associated with feasts, the wealth and fertility of the Earth, and the protection and gifts of agrarian mother goddesses.

The Ten of Pentacles represents the gaining and celebration of, or planning for, long-term material stability. It can refer to retirement plans, inheritances, communal and generational wealth, and legacy.

This card asks us to consider what kind of legacy we have inherited, for better or worse. As we receive and make use of our own material gifts, to whom will we pass them on? What will we bequeath to future generations?

Corn meaning: fertility • well-being
• inner-peace • prosperity • wealth

Upright: generational wealth • positive legacies • planning for future prosperity

Reversed: generational poverty • long-term instability • poor financial planning

Page of Pentacles
Evening Primrose (*Primula vulgaris*)



*Primrose brings more cheer than gold,
For there is no truer treasure we can hold
Then a fair and joyous, youthful heart
Even if its faith will soon depart.*

*Youth is easy to come and easy to go,
Yet with its departure wisdom will grow.
And like hazelnuts that fall all around
There is so much potential to be found.*

*Primrose be gentle, primrose be kind.
Primrose help me know my youthful prime.
And when potential must yield to actuality
Hazel tree help me become all I can be.*

Next to a large golden coin, beneath a Hazel tree, a young woman peacefully plucks yellow Primroses.

Primrose represents youth and patient nurturing on the one hand, and fickleness and faithlessness on the other. Likewise, the Page of Pentacles is just beginning to explore the earthly world, financially or physically, and thus often lacks the experienced dedication of those more practiced. They are still learning how and where to invest their time, labor, and material resources, and will benefit from some patient guidance.

Primrose meaning: patience • gentleness
• nurturing • youth • belonging
• life stages

Hazel meaning: wisdom • peace • beauty
• knowledge

Upright: messages of wealth • exploring the physical or material • a diligent student of earthly matters • a beneficiary of material inheritance

Reversed: messages/messengers of poverty
• a materialistic/stubborn student

Knight of Pentacles Patchouli (*Pogostemon cablin*)



*Patchouli, its calm and earthy smell
Will make one feel that all is well.
Calm hearts make for steady hands
With which to work and till the lands.
And if our lands are well maintained
Then all hungry bellies can be sustained.
And if all men have their bellies full,
Then each man will his own weight pull.
And if all men can together work
Then no longer will corruption lurk.
And then all will flower and bear fruit
So we settle, with love, any dispute.*



A mounted knight in a field of Patchouli looks off towards the mountains. He clutches the prized coin he has recently won from the dragon, who remains impaled by his spear.

Many know Patchouli better for its earthy, musky scent than its appearance, for it is a common fragrance in incense, shampoo, and cologne. As an essential oil, Patchouli enhances the libido, and stimulates serotonin and dopamine production, which help one feel calm and content.

In spell work, it aids in bestowing sexual power, fertility, and wealth. The Knight of Pentacles, similarly, is a down-to-earth individual who is in-tune with his body. He is intent on solving material problems, often as a hired laborer. He and his methods are conventional and dependable.

Patchouli meaning: wealth • sensual pleasure • defense • sexual power • peace

Upright: problem-solver in the material and physical realm • a calm and diligent worker

Reversed: uncreative/unmotivated worker
• narrowly focused on the physical realm

Queen of Pentacles
Vervain (*Verbena officinalis*)



*Fair Vervain of unassuming power
Help me weather my darkest hour.
Take away the lack that leaves me afraid.
Let all my debts and sentiments be paid.*

*Keep me pure and of mischief-free,
And let all good fortunes flow to me.
Let all illusions and enchantments break.
Grant me real wealth and return the fake.*

*Violet Vervain, share beauty and grace.
Help me feel content within my place.
Heal my body, make well my mind.
Make malice's hand upon me unbind.*

A woman sits in a field of Vervain flowers, inspecting a particularly well-blossomed sprig. A giant gem-inlaid pentacle rests at the hem of her ornate gown.

Vervain has a long list of purported magickal properties, from enchantment, spiritual purification, protection against one's enemies, maintaining chastity, and the accumulation of wealth, to the restoration of youth and physical health. It also symbolizes peaceful settlements.

Indeed, the Queen of Pentacles makes for a potent patron, capable of offering all the material resources needed to thrive, including, but not limited to, money, food, shelter, and acts of service. One must be wary, however, for reversed she can indicate one who gives as a form of financial manipulation.

Vervain meaning: purification • wealth
• healing • enchantment • harmonious life

Upright: one who offers material support
• physical healer or nurturer

Reversed: someone withholding of material support • financial manipulation

King of Pentacles
Magnolia (Magnolia campbellii)



*O strong and noble Magnolia tree,
Share the secret of your fecundity with me.
If my prospects grew grand as your blossom
Surely my wealth would be as awesome.*

*True enough that luck favors stability,
Affluence lost when all falls predictability.
Yet the winds of change will always blow,
And we can only reap what seeds we sow.*

*So, I ask the great Magnolia tree
To kindly keep watch over me.
Help me know what will not change,
And let me all else rearrange.*



A king sits contemplatively beneath a Magnolia tree, inspecting a blossom in one hand as he holds a giant golden coin in the other.

Magnolia trees represent wisdom, fidelity, and strength, particularly in the face of change. The King of Pentacles likewise represents someone who prepares for the future with patience, practicality, and diligence. They are likely to accumulate a wealth of material resources with which to invest in manifesting their vision.

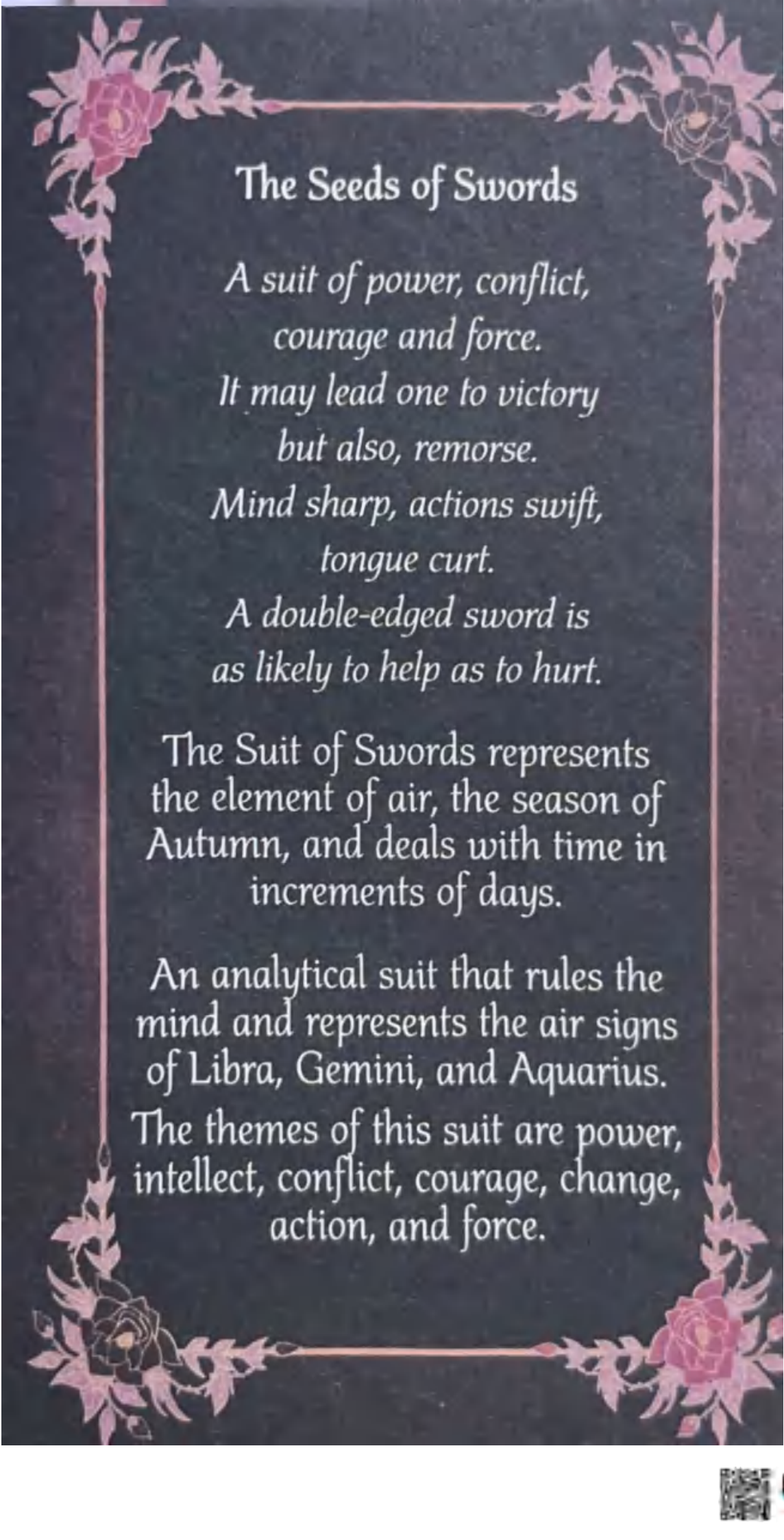
The King of Pentacles can appear as an investor, executive, merchant, or anyone with financial/material authority. The danger of this king is his tendency to mistake money for morality, and exploit or manipulate those with fewer resources.

Magnolia meaning: wisdom • acceptance
• strength • changes • enduring love

Upright: someone who uses material resources to manifest their vision
• one with material authority/investment funds

Reversed: financial fraud or manipulation
• buying loyalty • material obsession





The Seeds of Swords

*A suit of power, conflict,
courage and force.*

*It may lead one to victory
but also, remorse.*

*Mind sharp, actions swift,
tongue curt.*

*A double-edged sword is
as likely to help as to hurt.*

The Suit of Swords represents
the element of air, the season of
Autumn, and deals with time in
increments of days.

An analytical suit that rules the
mind and represents the air signs
of Libra, Gemini, and Aquarius.

The themes of this suit are power,
intellect, conflict, courage, change,
action, and force.



The Ace of Swords

Lily of the Valley (*Convallaria majalis*)



*Lily of the Valley, cloaked in white,
Your simple flowers a pure delight.
In chaste humility you hang you head
In the calm and quiet you hear what's said.*

*The muses walk upon you three by three
As you grow for truth, reason, and clarity.
And all who in your serene beauty bask,
Will find they're equal to life's great task.*

*To listen so that we may understand,
To know thy self, and thy self-command.
To accept all truths, open mind and arm
For to denial can only bring more harm.*

A Lily of the Valley fairy holds a righteous sword up to the clouded sky, as the light attempts to break through the fog. Lily of the Valley's bell-shaped flowers represent the ringing of truth and the power of reason to illuminate the correct path forward. Their white color speaks to clarity of mind, and their downward curve reminds us to stay humble as we pursue our truth.

Lily of the Valley bloom but briefly, representing the fleeting nature of true "moments of clarity." The Ace of Swords similarly represents sudden clarity of truths both pleasant and painful. It also represents communication and comprehension. Reversed, it may symbolize one who is unreceptive to the truth or one prone to overthinking.

Lily of the Valley meaning: choosing the correct path • mental power • purity

Upright: clarity • epiphany • news
• discovery • dispelling lies

Reversed: ambiguity • mental fog
• overthinking • missing the point

Two of Swords

Eyebright (*Euphrasia officinalis*)



Eyebright, Eyebright,
Like the stars I see tonight.
Small and distant yet still clear
Help me rid my mind of fear.
I wish to see all that's needed
To keep peace and harmony well headed.
Help my victories land where they count.
Help me know what to keep and discount.
Eyebright with clarity you see,
Pass this knowledge unto me.
Help me choose the path to take.
Help me know a fair deal to make.



A Praying Mantis patiently waits amidst two equal Eyebright flowers as the waning moon dimly shines overhead. Eyebrights are small flowers said to bestow clairvoyance, mental clarity, and grant clear perceptions of both the mundane and magickal realms. Similarly, we too must see with eyes unclouded if we are to act meaningfully.

The Two of Swords concerns careful planning and diplomatic action. It asks us to evaluate the situation with an unclouded perception and choose to act only as necessary, overlooking conflicts that are not likely to yield an advantageous victory.

Reversed, this card indicates that panic, cowardice, rashness, or personal bias may be clouding our vision and preventing significant or decisive action.

Eyebright meaning: insight • clear perspective/perception • memory • visions

Upright: overlooking conflict to maintain harmony • consideration • due diligence

Reversed: unaware of conflict • cowardice • blind-sightedness • paralyzing indecision

Three of Swords

Bittersweet (*Solanum dulcamara*)



*Bittersweet, like a rabbit's snare
The pain of an unanswered prayer.
Sweetest longing made to rot
A promise made empty and for naught.*

*One sword for the lovely terms we laid.
One sword for the bitter heart betrayed.
The third sword is for the keen pain it left
When truth prevailed over a heart bereft.*

*The rabbit wonders how it came to this
After the poison of an abandoned kiss.
Woe to the rabbit and his wondering mind,
For the truth of one trapped is seldom kind.*



Three swords pierce a white rabbit ensnared by Bittersweet. A black rabbit hangs below, sad, but safe. Bittersweet is a poisonous plant that acts as a symbol of fidelity because its taste begins bitter but turns sweet. As a talisman, it removes negative energy and helps one forget past love.

The Three of Swords represents the metal processing of loss and betrayal. Often acting a harbinger of promises, it warns of the grief that ensues when they are broken.

Betrayal is a threefold sorrow, for we mourn the breaking of expectations, the outrage of the unexpected outcome, and the shattered hopes of what could have been. Reversed, the swords fall out, and we are able to process our woe and move past bitterness and into sweetness once more.

Bittersweet meaning: fidelity • caution
• honesty • enchantment • protection

Upright: betrayal • processing grief
• making solemn promises • heartbreak

Reversed: moving on • everything out in the open • emotional cleansing • healing

Four of Swords
Poppy (*Papaver somniferum*)
Hops (*Humulus lupulus*)



*Poppies do for Hypnos bloom
When he ends our pain and none too soon.
Hops in a mirthful concoction mix
One of many well-loved tricks.*

*Merrily we trade wisdom for gladness.
Merrily we trade good sense for madness.
And when sleep comes and dawn arises,
What then will we think of our prizes?*

*Pain now relieved, rest is needed.
Sense returns and in silence is heeded.
Next time we will not overdo our pleasure
And ensure that we take note and measure.*

Hops and Poppies surround a tombstone awash in the light of the rising sun. The Four of Swords represents moments of solemn contemplation, solitude, remembrance, and restful quiet. When reversed, it indicates noise, action, and group events—often those that spin out of control. Therefore, this card indicates both wild frivolities, as well as the quiet, and often regretful, morning after.

Both Poppy and Hops can symbolize either end of this spectrum, as Poppies are used to make opioids, and Hops to make beer, both of which can be easily misused in the name of recreation. They can result in the mournful reflection indicated by the Four of Swords.

Hops meaning: mirth • healing • sleep
• insobriety • passion • injustice • pride

Poppy meaning: remembrance • life ☹ death • sleep • pleasure • imagination

Upright: rest • reflection • sobriety
• solitude • remembrance • peace ☺ quiet

Reversed: madness • wantonness
• riotous frivolity • noise • flurry of action

Five of Swords Borage (*Borago officinalis*)



*Starflowers bloom like truth arises
Compelling us to fight for invisible prizes.
Like many ideal virtues, pretty and pure,
We wonder the cost of convictions so sure.*

*Blue and beautiful, rare and fleeting,
Always there is some ideal competing.
With sharp tongues and shaper wits
We bade our rivals to call it quits.*

*If they refuse, then we walk away,
And save our truth for another day.
Who can say what history will see?
Seldom does truth come easy or free.*

A Peahen amidst blooming Borage flowers looks up towards an eight-pointed star as two rejected Peacocks mope in the distance. She is in pursuit of a truth greater than what they can offer her, and she has made that clear.

The Borage flower grants protection to the traveler as an amulet and symbolizes bluntness and courage. In the intellectual Suit of Swords, the courage we need is one that allows us to travel in search of our ideological truth, as well as accept, speak, and defend it, regardless of social expectations or niceties.

This card indicates the rejection of what is on offer in favor of the ideal. This mindset can be beneficial but is likely to yield arguments over what is ideal, true, or worthy. Hurt feelings, elitism, smugness, and rejection are likely outcomes.

Borage meaning: courage • psychic powers
• bluntness • safety • grounded optimism

Upright: fighting for one's ideals • smug in victory • looking for something better

Reversed: rejection • sore losers • elitism
• pointless ideological disputes

Six of Swords

Chicory (*Cichorium intybus*)



*Clever little Magpie stole the Chicory root
'Tis the key she needed to unlock her loot.
Clever little Magpie, to others she's invisible
Skirting hurdles by Chicory made divisible.*

*Sure as blue flowers do in winter grow,
Nothing keeps Magpie from where she'll go.*

*If it takes a day or a hundred years,
Chicory helps her fly past all of her fears.*

*Magpie will find which way is best.
And Chicory will bloom where she nests.*

*Together they, like key and lock,
Will open doors and treasures stalk.*

Here, a Magpie carries a key in her beak as she weaves herself in-between six swords while flying over a stone wall and Chicory plant. Magpies are already skilled problem solvers, but Chicory offers even more magickal assistance. Said to aid in overcoming obstacles, promote luck, and provide invisibility, Chicory is a hardy perennial weed with a modest yet hopeful looking flower.

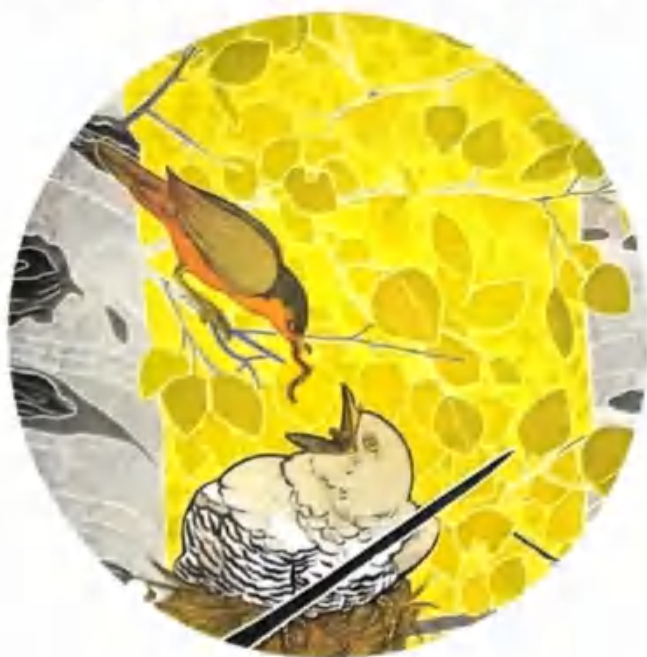
Chicory also symbolizes faith, patience, and devotion. While upright this card is about moving on, soaring over obstacles, problem solving, and the faithful (sometimes-painful) persistence these acts require. In its reversed position, it suggests one may feel their obstacles are too profound to overcome, although the worst of them are likely of the mind.

Chicory meaning: overcoming obstacles
• invisibility • opening locks • luck • curse removal • favors

Upright: problem-solving • overcoming trauma • moving on or past barriers
• faith

Reversed: faithlessness • stagnation
• hopelessness • unsolvable problems

Seven of Swords
Aspen (*Populus tremula*)



O lovely, lithe Aspen tree
Like frail truths, you quake from me.
Protector against theft of heart and hand,
Your leaves, like gold coins where they land.
You stand for truth and protect the nest
of whichever bird claims to need it best.
The Cuckoo bird and the cuckolded too
You shield who are false, as well as true.
From one perspective, the Cuckoo is a thief.
From another, she is a soul in need of relief
Who can fault a bird for wanting a home?
For wanting to change unknown to known?

Aspen trees shield one against theft, psychic and physical danger, and bestow eloquence. They appear as individual trees, but actually, every tree in the grove connects as one organism.

In contrast to the oneness of the Aspen grove, this card also features a Robin feeding a fledgling Cuckoo bird. Cuckoos sneakily lay their eggs in the nests of others, and when the fraud hatches, it promptly kills its foster-siblings. Nevertheless, the foster-parent will dutifully feed the imposter, for what else can they do? By then, it has already lost all its other chicks.

Similarly, this card indicates subtlety, tricks and subterfuge, often as a means to find the best "nest" for oneself. Reversed, it may suggest one who remains quietly uncommitted as one assesses the situation.

Aspen meaning: duality • confidence
• quiet fears • protection • anti-theft
• eloquence

Upright: deceit • lies • betrayal • theft
• manipulation • smooth-talking

Reversed: taking what you can out of a bad situation • lying by omission • subtlety

Eight of Swords Kudzu (*Pueraria montana*)



*Kudzu creeps to cover the world
Blindly groping, stretched out, and unfurled
Over pillars of stone and the tallest of trees
Smothering all in its tightening squeeze.
Each leaf is a thought grown in our head
A wonder, a whisper, a secret unsaid.
Like insidious vines will covet and creep
Our mind takes on more than it can keep.
Before you know it, we are no longer merry
Options can be burdens too heavy to carry.
Logic and reason must know their own end
Lest they make more tears than they mend.*

Kudzu is a flowering vine that quickly grows rampant and unrestrained until it has covered and suffocated everything beneath its green blanket. Kudzu has conquered, covered, and consumed entire forests and their ecosystems. It therefore symbolizes growth brought to the point of wild unsustainability.

In the intellectual Suit of Swords, this represents the power of the mind to create, receive, and become overwhelmed by information overload, options, probabilities, possibilities, considerations, etc. There are always thousands of reasons to do something, and just as many not to. There are likely even more ways of doing or avoiding it. At a certain point, our other faculties (intuition, drive, and physical restriction) must come to direct us.

Kudzu meaning: cursing • withholding
• overshadowing • unchecked growth

Upright: overwhelmed by thoughts, ideas, or options • mental paralysis • in a bind

Reversed: limited options • pruning back ideas • mental freedom

Nine of Swords

Agrimony (*Agrimonia eupatoria*) ☉

Chamomile (*Chameamelum nobile*)



*Agrimony, Chamomile, yellow and white
In the darkness your brightness is a delight.
Although the night may be filled with dread
In quiet repose you bade us rest our head.*

*Chamomile brings luck, purity, and ease.
Agrimony shields and protects all of these.
Together they bloom in goodness and grace
And all negativity they work to displace.*

*For burdens of day can be lessened by sleep
As dreams may reveal the secrets we keep.*

*Once the puzzle of our torment is solved
Our burdens and woes may finally dissolve.*



A hellish apparition appears from wisps of dark smoke and attempts to swallow the blood-red moon. Agrimony and Chamomile bloom as bright beacons amidst the darkness, aiming to help calmer heads prevail.

The Nine of Swords portends extreme anxiety and mental anguish, such that our sleep is disturbed resulting in perpetual cycles of unease. A sprig of Agrimony laid under the pillow is a folk remedy to induce deep sleep. Many know the comforts of Chamomile tea to soothe frayed nerves and break insomnia's spell. When the card appears reversed, sleep returns, healing commences, and we can begin to reevaluate our circumstances with a clear head.

Agrimony meaning: protection • sleep
• inner fears

Chamomile meaning: rest • purification
• fortitude • wealth • admiration of courage

Upright: extreme anxiety • sleepless nights
• spiraling • insomnia • fears • worries

Reversed: rest • recovery • coming to terms
• worries lifting • calm restored

Ten of Swords

Spider Lily (*Lycoris radiata*)



*Red Spider Lily, like life-blood lost,
Show us the price our choices have cost.
In this life we have wondered and wavered
And now we must meet the results favored.*

*In our next life perhaps, we will know
Where other decisions might lead us to go.
But this time our stance has been made.
Now we can only lay down our blade.
We have thought and we have spoken.
We have all ideas explored and awoken.
The path was set, and now it is ended,
This is the conclusion fate has intended.*

A skull run through by ten swords sits on a tombstone surrounded by Spider Lilies. The human skull represents conscious awareness, thought, intellect, danger and death. In Japanese culture, Spider Lilies also represent death, as that mythology states these lilies bloom in the gardens of the afterlife and guide souls towards their next reincarnation.

The Ten of Swords represents an intellectual death, for the death of a question is its answer. One may find this painful, for not all endings are happy, nor all truthful answers pleasing. Nevertheless, death implies rebirth or reincarnation. We can carry these lessons of the past cycle as we move on to the next. Reversed, the end has not yet come, and we may still alter our fate...or so we think.

Spider Lily meaning: death • tragic fate
• abandonment • amnesia • lost souls

Upright: the death of thought • resolution
• conclusions reached • decisions made

Reversed: struggling to accept outcomes
• beating a dead horse • overthinking

Page of Swords
Slippery Elm (*Ulmus fulva*)



*Slippery Elm like slippery speak
Interest and beauty are sure to peak.
Be sure to think first and speak well
Words cannot un-ring any more than a bell.*

*Inner bark, slick like the tongue
Elm sees all mischief come undone.
And if that mischief must come to be,
Allow all to see though it with clarity.*

*Slippery Elm, independent and wise,
Tell me what roots of wisdom to surmise.
Like your branches tall, yet easy to bend,
Our minds must be flexible to transcend.*

A young man treads carefully amidst a grove of Slippery Elm trees as he meticulously analyses his hunting knife.

When burned, Slippery Elm possess the magickal ability to halt gossip. It also nurtures eloquence in children who wear it as a talisman, ensuring they grow adept in the arts of communication and persuasion.

Indeed, the Page of Swords often speaks to one young and inquisitive, one intent on analyzing, understanding, and communicating with the mind of the world and those within it. Curious but gullible, this page has much to learn and does so eagerly. One must beware of their penchant for gossip and tall tales, however.

Slippery Elm meaning: halting gossip

• eloquence • independence • travel to the underworld

Upright: news • exploring the intellectual world • a diligent student • a beneficiary of intellectual/philosophical inheritance

Reversed: bad news • bureaucracy

• technicalities • gullibility • gossip



Knight of Swords

Mint (*Mentha spp.*)



*Mint, with scent sharp as a blade,
Please now do as I have bade.
Keep me safe for travels long,
Keep my wit sharp and strong.*

*Mint, with flavor bright and pure,
Become now victory's line and lure.*

*I call, I will, I now command,
Put wealth aplenty in my hand.*

*Mint, with leaves small and mighty,
Keep all evil weak and flighty.
Send it back from whence it came.
Help me all my obstacles to tame.*

A mounted knight charges brazenly over a mint-leafed dragon, sword raised. Mint is a popular ingredient in many spells, from alleviating health problems (particularly headaches and stomach issues) to attracting prosperity and ensuring safe travel. Indeed, there are few problems that Mint is ill equipped to solve, as its fresh scent helps clear the mind, dispel evil or stagnant energy, and sharpen the senses.

So too is the Knight of Swords an intellectual problem solver with a sharp tongue and shaper mind. He will breeze past any problem in his path, unaware, or perhaps uncaring, of potential casualties. This knight sees only problems and solutions, and neither sympathy nor physical limitation is likely to deter him.

Mint meaning: wealth • traveling • virtue
• exorcism • wisdom • healing
• knowledge

Upright: intellectual problem-solver
• an intellect or analytical consultant

Reversed: a critical and unsympathetic thinker • overly analytical/intellectual

Queen of Swords

Almond (*Prunus communis*, *P.dulcis*)



*Almond blossoms, pink and pure,
Like a love soft and demure.
Yet encased her fruit shall be
Her worth too good to give for free.
Prudent judgement will yet win the day.
Listen to what words the wise ones say.
To crack the nut and take its heart
One must first with their folly part.
Almond leads to treasure indeed
For the truest treasure is the seed.
The one who plans in Spring for need
Shall always in the Winter succeed.*

A woman stands tall and ornately robed in in hues of white and gold amidst blossoming Almond trees, a sprig in one hand, an ornate dagger in the other.

The Almond offers wisdom, clear-headedness, sobriety, and higher understanding to those who partake of its flesh. A sprig in the pocket may lead one to treasure and grant good business sense.

Its blossoms symbolize virginity, purity, and knowledge. So too does the Queen of Swords offer wisdom and knowledge to those she deems worthy of the information, often in the form of news, gossip, advice, and sound judgment. Reversed, she is withholding, severe, and manipulative. Information is her power, and she will give or withhold it at will.

Almond meaning: wisdom • prosperity
• sobriety • logic • higher understanding

Upright: one who offers intellectual support via social/political council

Reversed: someone withholding of information • someone who plots, schemes, and manipulates

King of Swords
Date Palm (*Phoenix dactylifera*)



*Date Palms bestow us your virile powers.
So protective, with many fruits & flowers.
In temperate weather, the dates are grown
Harsh winds do make success unknown.
Palm frond, a sentinel barring all that is vile
So we can concentrate on deeds worthwhile.
A date, so desired, a sought-after award.
Grant to those deserving of just rewards.
Date Palms help us to stay fertile and fair,
As we pursue life's goals, and truth unbare.
And though we lay plans to ensure success,
We must, against failures, plan our redress.*

A king stands proudly among a group of Date Palms growing in a desert oasis. He holds a scepter on one hand and a palm frond in the other. Date Palms have magickal powers pertaining to masculine fertility, peace, and victory.

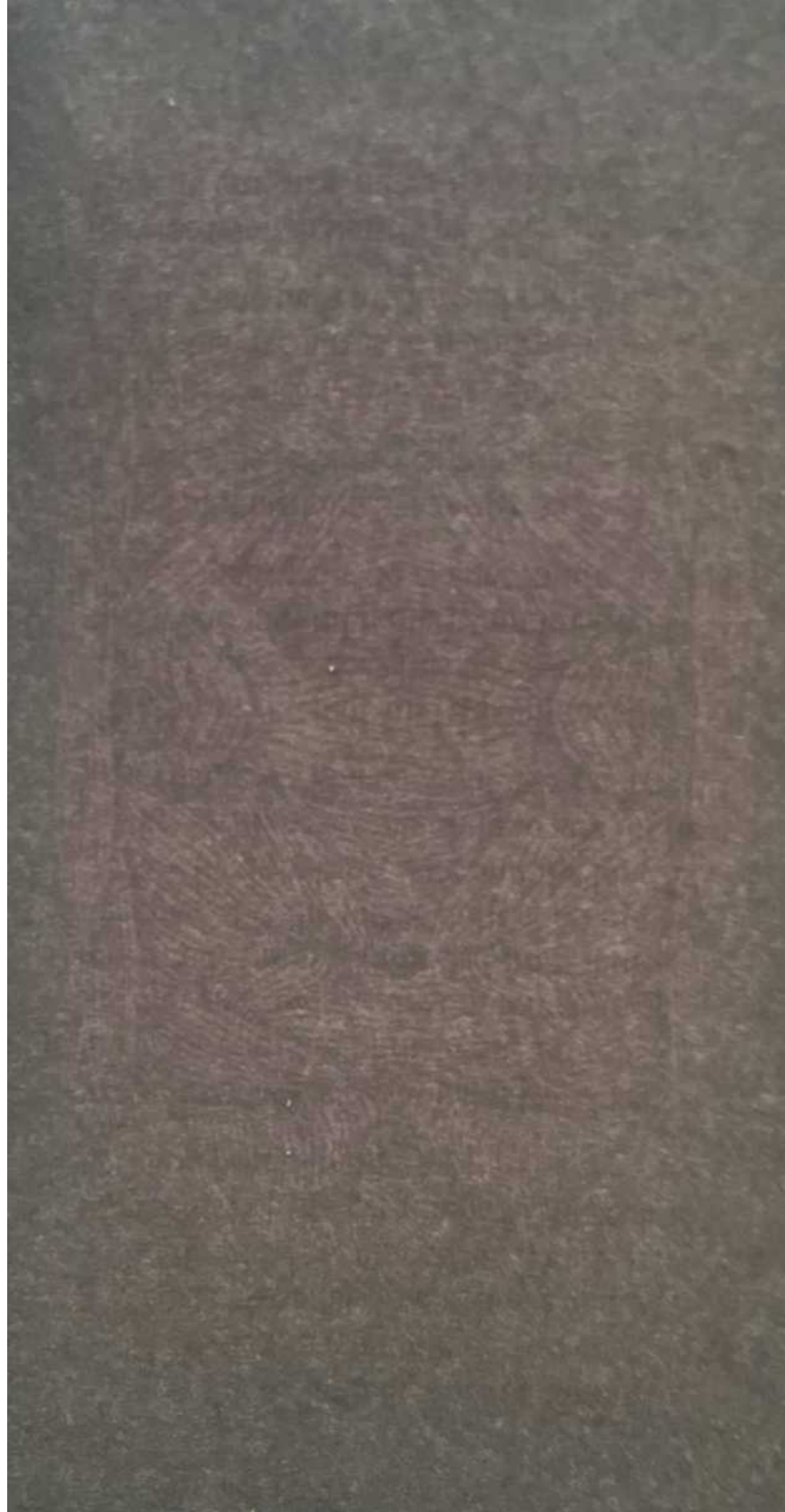
According to folklore, a palm frond kept near the entrance of the home protects it from evil, and the area in which they plentifully grow is protected from foul weather. It is the public duty of a king to ensure his people are safe and the land is fertile. It is his personal duty to sire an heir and ensure his kingdom outlives his reign.

Critical, intellectual, and diplomatic, the King of Swords does this by observing social and natural patterns and uses this data to make plans to ensure future success.

Date Palm meaning: victory • success
• masculine fertility • spirituality • life

Upright: someone who uses data or intellectual resources to manifest their vision • one with intellectual authority

Reversed: harsh, hasty, or severe judgments
• overly critical • micro-management



The Wreaths of Wands

*A suit of primal power,
expansion, ambition and strength*

*For whom the battle of egos
are fought at great length.*

*A wand may bless one
with the inspiration to grow.*

*But one can only reap
that seed which they diligently sow.*

The Suit of Wands represents the
element fire, the season of Summer,
and deals with time increments
of weeks.

A powerful suit that rules the spirit
and represents the fire signs of Leo,
Sagittarius, and Aries.

The themes of this suit are primal
energy, sexuality, determination,
spirituality, growth,
and inspiration.



Ace of Wands
Rosemary (*Convallaria majalis*)



Rosemary, my heart ignite
Take all wrong and turn it right.
Remember me as one aflame
Without fear or disdain.

Purify me of what has been tainted
By a heart whose courage has fainted.
In me always alight and inspire
A burning and virtuous desire.

Revive the bygone vitality of youth
And my past earnestness for truth.
Restore life-red blood to my pallor
Thwart all terror with admirable valor.



A Rosemary fae dances fearlessly among the flames, her blue flowers reminiscent of the root of fire. She brings forward an enormous wand.

Rosemary, a popular culinary herb, is imbued with both magickal and practical purpose. Its antibacterial properties make it a potent herb for both spiritual and mundane purification. When added to the fire, as either incense or a flavorful seasoning, it helps restore vitality, memory, clear the mind, and awaken our desire.

According to the Language of Flowers, it means, "your presence revives me." Likewise, the Ace of Wands speaks to the spark of ambition, motivation, desire, and inspiration needed to begin a new journey, project, or endeavor. Reversed, it indicates drained motivation or waning vitality.

Rosemary meaning: lust for life • vitality
• memory • rejuvenation • purification

Upright: sudden inspiration or motivation
• desire • yearning • vitality
• rejuvenation

Reversed: unmotivated • lack-luster • tired
• false-start • lethargy • apathetic

Two of Wands
Rowan (*Sorbus asucuparia*) ☽
Heliotrope (*Heliotropium*)



*The axe forgets, but the tree will remember
What we have sacrificed for our splendor.
Rowan berries, red like the blood of man
Foretell what lies ahead of a journey began.*

*Yet sure as Heliotrope follows the sun
Our path is set, once our adventure's begun.*

*Magickal Heliotrope and Rowen tree
Reveal how to manifest the visions we see.*

*In good faith we begin our just pursuit
And seek our many desires for loot.
We will burn brightly, if only briefly
All the while our desires felt deeply.*

According to magickal lore, both Rowen trees and Heliotrope shrubs possess prophetic ability, Heliotrope for its devotion to the omniscient sun god Helios and Rowen for its use by the ancients to carve magickal tools such as rune staves and divination rods. In mythology, Rowan relates to gods of vitality, such as Thor, Norse god of strength, and Hebe, Greek goddess of youth.

Here Heliotrope and Rowan symbolize the kindling of a devoted desire to begin a grand adventure, as well as the tools we will use to plan, and succeed on it. The axe in the stump represents our initial attempts to “carve” our path, and implies dangers we may, or may not, have predicted.

Rowan meaning: courage • wisdom
• insight • visions • vitality • spiritual strength

Heliotrope meaning: prophecy • devotion
• longing • intoxicated by pleasure
• success

Upright: planning & beginning a journey
• forging paths • desire that inspires action

Reversed: lost in plans • cowardice
• unpreparedness • indecision • hastiness

Three of Wands
Birds of Paradise (*Solanum dulcamara*) ☯
Oranges (*Citrus X sinensis*)



*Bird of Paradise, tall and proud
Colors vibrant, unabashedly loud.
As we grow in strength and grace
Let us too boldly our obstacles face.*

*Oranges bracing and vibrant hue
Let us stay sweet and to virtue true.
Despite our fears, we dare to venture
Never resisting the call of adventure.*

*Orange blossoms sweetly flower
Birds of Paradise grow into power.*

*We too will seize the day
Seeing everything then go our way.*



Bright Oranges and Bird of Paradise thrive under an auspicious noonday sun. The Three of Wands represents the initial steps of our journey, foretelling a fruitful and encouraging beginning if the card is upright, but a discouraging and lack-luster one when reversed.

This card speaks of our ability to rule ourselves as we set out to seek our desires. Success necessitates hopeful courage as well as determination and vigilance. Like the Birds of Paradise hold themselves tall, resplendent and proud, so too must we despite our uncertainty. Zesty and filled with sweetness, the Oranges symbolizes our own sweetness and zest for life as we face our obstacles.

Bird of Paradise meaning: magnificence

- self-acceptance • royalty • excellence

Orange meaning: enthusiasm • excitement

- fertility • brining joy • honesty
- enchantment • protection

Upright: self-empowerment • vigilance

- initial rewards • fruitful efforts

Reversed: weak willed • initial setbacks

- discouragement • poor leadership



Four of Wands
Peony (*Papaver somniferum*)



*Peonies in perfection bloom
A celebration, over too soon.
For love, for life, for hearts entwined
Peonies bloom for to us remind.
All jubilant joys will come and go
As will war, strife, sorrow, and woe.
So happily, we may take this day
Before foul winds can blow it away.
Be merry today for tomorrow who knows
Which way the fair-weather wind blows.
Even peonies, once full of charming grace,
Will eventually all their beauty displace.*

Someone tosses a bouquet of vibrant pink Peonies tied with a red ribbon, and their petals fly like confetti. Peonies represent happy unions, relief from pain, anniversaries, nobility, humility, and wishes for good health and prosperity. Therefore, they are the perfect gift to bring to celebrations of all varieties, from weddings and anniversaries to graduation ceremonies and birthday parties.

Similarly, the Four of Wands speaks to a brief but celebratory reprieve from an otherwise long and arduous journey. It is a time for joy and gratitude regarding any aid or success obtained thus far. Reversed, the celebration likely feels forced, premature, awkward, or otherwise undesirable. It may also indicate shame or pain too fresh for a celebration to mollify.

Peony meaning: marriage • anniversary
• good health • prosperity • romance

Upright: celebrations • pleasant gatherings
• special occasions • festivities

Reversed: no time to celebrate • shame
• awkward parties • obligations
• discomfort

Five of Wands Black Pepper (*Piper nigrum*)



When we fight to seize the day
It seems countless others block our way.
Each wanting to stake their own claim;
Each fighting for their own kind of fame.
Black pepper our home and on our person
See no evil spread and no sin worsen.
Let no demon pray upon the fragile heart;
Let not envy nor loss tear virtues apart.
Please banish what brings us shame
So that victory and honor both we claim.
Success we would call only on these terms.
Let it leave no ill will, grief, or burns.

Several shadowy burnt hands reach for the sun through a Black Pepper plant. Black Pepper is a staple spice for both culinary creation and magickal protection. Carrying Pepper averts the evil eye and helps one temper their own envy. It banishes evil and maliciousness of all kinds, including the exorcism of spirits and foes, as well as fortifying one's natural spiritual and mental protections.

These abilities are helpful when the energy of the Five of Wands appears, for it portends fierce competition, multiple and potentially bitter or envious rivals, and a burning desire to emerge victorious.

Upright, this competition is thrilling and even fun. Reversed, the pressure to shine and outperform competition may turn one to envy, cruelty, or cheating.

Black Pepper meaning: strengthen energy
• protection • purification • hex-breaking

Upright: competition • ambition • fighting to win • facing challenges/foes • ego battle

Reversed: overwhelmed by obstacles
• bowing out • harmful escalation • envy

Six of Wands

Bay Laurel (*Laurus nobilis*) ☽
Nasturtium (*Tropaeolum majus*)



Bay Laurels, handed down from on high
To those who don't let opportunities go by.
A crown to wear with leaves that burn,
A victory taken, hands left not to yearn.

Nasturtium leaf shields, flowers bright.

Emboldening the heart for a fight.

Climbing, clinging, like sunlight at dawn.
Grant the faith, courage, and valor to go on.

Make a wish as you burn the Bay.
Break through darkness like the light of day.

Shield your heart with your own hands
To grasp everything your desire demands.

One bright Nasturtium flower rises over its fellows, framed by wreaths of Bay Laurel and showered by golden coins that seem to be falling from the heavens.

Nasturtiums, with their vibrant hues and shield-shaped leaves, symbolize vitality, victory in conquest, and protection. Bay Laurels remain symbols of success, glory, public acclaim, and merit since the days of antiquity, since they formed the crown bestowed on victors of myriad competitions.

Together, they embody the energy of the Six of Wands, which portends public success, recognition, awards, and triumph, especially when won over many rivals or competitors. Reversed, these successes may ring hollow, premature, or even shameful, especially if they are ill-gotten gains.

Bay Laurel meaning: merit • victory
• fame • praise • prosperity • renown

Nasturtium meaning: conquest • fun
• support • vitality • study • protection

Upright: success • public recognition
• acclaim • awards • triumph

Reversed: shame • public failure
• premature, questionable success

Seven of Wands
Chili Pepper (*Capsicum spp.*)



*Chili Pepper, set wicked tongues aflame.
See all my petty rivals cuffed and lame.
Keep close to me my heart's desire.
See no evil against me transpire.
Chili Pepper, bright and bold,
Let no lie to me be told.
Let me keep what gains I have won,
See all efforts against me undone.
Chili Pepper, add spice and heat.
Let me all my rivals beat
In games of conquest, love and war
Banish loss and evil evermore.*



A Chili Pepper plant grows through a golden crown that is sitting in a smear of blood, surrounded by flames.

Following the public acclaim and achievement of the Six of Wands, the Seven of Wands speaks now to the need to defend whatever boon or title we have won. Public gain attracts the attention of rivals and opposition. Success has raised the stakes of potential loss, and this fear has lit a fire that burns unpleasantly beneath us.

In spell work, due to their intensely spicy flavor, Chili Peppers can “add spice” to life, stoke the flames of drive and desire, as well as break hexes, banish foes, and grant protection. The Seven of Wands likewise warns us to keep the fires of passion lit beneath us even as we keep envious rivals at arm’s length.

Chili Pepper meaning: hex-breaking

- motivation • protection • fidelity
- “go away” • drive

Upright: to light a fire beneath someone

- rivalry • under siege • self-defense

Reversed: lost or hopeless battles • falsely seeing maliciousness • starting unjustified fights



Eight of Wands
Coffee (*Coffea arabica*)
Cinnamon (*Cinnamomum zeylanicum*)



Cinnamon, please draw unto me
Success power and prosperity.
Make it swift and make it sure
Grant me luck, speed, and allure.
Coffee bean, flavor bold and bright,
Give me courage, grant me flight.
See all my progress, swift and true
Let each day make me grow anew.
Luck, wealth, and warmth come my way.
Hurry to me now, and to me vow to stay.
Come aid my work and see it through,
Help me catch all that which I pursue.

Against a vibrant orange backdrop, eight wands rush through Coffee plants towards the Cinnamon leaves. So too, the Eight of Wands portends swift progress, movement, momentum, travel, and speed in all things from news, deliveries, insights, and messages to the advancement of goals, careers, and relationships.

Coffee beans are renowned for their ability to energize us. Cinnamon is a plant with incredible magickal abilities, from attracting wealth, power, and success, to raising spiritual energy, purifying sacred tools and spaces, and boosting the speed and potency of any spell it is added to.

Coffee meaning: energy • decisions • clarity
• insight • speed • productivity

Cinnamon meaning: success • power
• creativity • spirituality • wealth
• attraction • advancement • passion

Upright: alacrity • travel • swift progress
• news, mail, packages and messages

Reversed: sudden stop or ending
• stagnation • no or slow progress • loss

Nine of Wands
Juniper (*Juniperus communis*)



*Knocked by the wind, beaten, betrayed,
Enduring storms, gratification delayed.
How can I go on, how can I persevere
Amidst a world so smothered by fear?*

*Juniper tree, shaped by the harshest of wind
I too am weary, and my grace has dimmed.
You grow in good faith even in arid climes,
Resilient and hopeful you wait easier times.*

*Protect me well and make pure my spirit.
Help me sing, when no one can hear it.
If better awaits, let us get there some day
If we gather courage and endure the fray.*

The wind has shaped a Juniper tree where it grows on an arid seaside cliff. Juniper trees are marked for their ability to grow in difficult climates and so have become symbols of spiritual and physical strength, endurance, and tenacity.

The Nine of Wands likewise represents our enduring spirit as we search, fight, and defend what is most important to us. Often, prolonged engagement with such conflicts creates jaded warriors who still yearn to find and champion virtues of truth, beauty, justice, and goodness, but are now too world-weary to see or expect them.

Upright, we maintain the good fight, and home in on what is truly worth our protection. Reversed, we may feel overwhelmed, exhausted, or defeated.

Juniper meaning: protection • endurance
• strength • journey • purifying evil

Upright: endurance • fighting for something better • protecting what matters

Reversed: jadedness • fatigue • hope lost
• burn out • inhospitable environments

Ten of Wands

Masterwort (*Peucedanum ostruthium*)



*The weighted pressure of Earth and time
Will wither reason and wilt rhyme.
Masterwort, Hades' pincushion bloom,
See that our burdens be lifted soon.*

*Vibrant petals encase flowers many,
Endure with beauty through troubles plenty.
Both glorious triumph and sorrowful defeat
Woe, worry, and strife will not long retreat.*

*It is a struggle indeed to conquer the day
To win the war, one must stay in the fray.
Some battles may yet be worth winning
While others are not worth even beginning.*

A cluster of Masterwort flowers struggle to hold the weight of the world. According to folkloric tradition, Masterwort, also called Hades Pincushion, instills courage, calms emotions, and enhances the strength and stamina of those carrying it. This makes it an ideal herb for those attempting strenuous, arduous, or difficult feats, particularly those necessitating mastery.

The Ten of Wands indicates situations such as these, where one finds themselves struggling with the final hurdles required to manifest a concept into reality. Of course, even a successful venture comes with residual problems related to sustaining it, or moving beyond it, to face yet more challenges. The reversed Ten of Wands indicates one overwhelmed by this burden.

Masterwort meaning: courage • strength
• granting willpower • calm emotions

Upright: pressure • final hurdles
• the heavy burdens of victory or mastery

Reversed: releasing burdens • giving up
• overwhelmed • being out of your depth

Page of Wands
Clove (Eugenia caryophyllata)



*Clove so spiced and safe and warm,
Protect us from evil's storm.
Purify our heart and our mind
Let life's riches be ours to find.
Halt the chatter of loose lips.
See through them no mischief slips.
Invigorate this stagnate place,
See evil be by good displaced.
Grant sweet richness to life's flavor,
See all fortunes fall in our favor.
Add swiftness and power to our spell.
See our work done and be done well.*

A young man carries a branch bursting with life as he dances spiritedly, Clove sprig in hand. Like Slippery Elm, Clove used as incense possess the magickal ability to halt gossip. It also attracts luck, love, and riches, repels malicious energies, rises high spiritual vibrations and purifies spaces of negative or stagnate energy.

The Page of Wands refers to one who also invigorates the energy of the spaces and people around them. Warm, zealous, and fun-loving, these individuals are intent on exploring and experiencing all the world has to offer but may be prone to biting off more than they can chew.

Reversed, this card indicates an enthusiasm that is bright but brief. One must be careful with criticism, as ego wounds and fits of temper are common.

Clove meaning: protection • comfort
• dignity • exorcism • money • attraction

Upright: new drives • exploring one's passions • spirited student or beginner

Reversed: unmotivated student • easily distracted • laziness • pleasure-seeking

Knight of Wands
Dill (*Anethum graveolens*)



*Dill grows tall with yellow flowers
And possesses all with splendid powers.
For it grants such an alluring charm
And protects us all from dangerous harm.*

*Dill is delicious, bright and bold.
Leaves so light and soft to hold.
Dispelling envy, attracting luck,
Although desire may run amuck.*

*For Dill oft flowers prematurely,
When heat calls out to it way too early.
Our desire once gotten may not last
We are less concerned with good than fast.*

A mounted mage charges boldly forth to meet a Dill leaf dragon head on, wand raised. Dill is a popular ingredient in food for its light but zesty flavor, and in spells for its ability to attract wealth, dispel envy, invigorate the libido, and protect the innocent.

So too is the Knight of Wands a passionate problem solver with a stout, if not self-righteous, spirit. She will confidently confront one obstacle and just as brazenly move onto the next. This knight is powerful and prone to swift piques of passion. They also tend to see themselves as champions of the just and virtuous. However, their disregard for details and a tendency to lose interest just as swiftly as it comes makes problematic any issues, people, or causes that require long-term commitments.

Dill meaning: wealth • traveling • virtue
• exorcism • wisdom • healing
• knowledge

Upright: passionate problem-solver
• a powerful ally • a free spirit

Reversed: non-committal and unfocused aid
• an adulterer • short tempered

Queen of Wands

Fig (*Ficus carica*)



*Like Fig fruits ripening on the tree
Desire grows, fills and then bursts free.*

*Tempting fruits of love and lust
They are both of fidelity and rewards just.*

*Fig covers shame with her unfurling leaf
And grants us a reprieve, however brief.*

*As the joy of her fruit coats the tongue,
Desire pulls until modesty is undone.*

*Figs will see our success sweetly peak
As she emboldens the gentle and the meek.
She calls to rise and take what you desire,
Or see all sweet fruit lost to the pyre.*

A woman stands proudly beside a grove of fruitful Fig trees. She is ornately robed in hues of red, deep violet, and gold and holds a wand laden with ripe fruits upon which a silver serpent slithers.

Since antiquity, Figs have served as both sweet, sumptuous treats, as well as symbols of wisdom, loyalty, desire, lust, abundance, and humility. Growing Fig trees indoors invites wealth and good fortune into the home, while sharing a Fig between lovers inspires fidelity, desire, and passionate sweetness.

So too does the Queen of Wands inspire others with her charm, loyalty, strength of will, passion, and warmth. She will offer enthusiastic support and stalwart allegiance to those she deems worthy and become ice cold or openly hostile towards those she does not.

Fig meaning: divination • love • fertility
• prosperity • luck • glamour • desire

Upright: one who rekindles enthusiasm and supports via passionate encouragement

Reversed: someone who belittles, ignores, or demeans • quick to temper • scornful

King of Wands
Cedar (*Cedrus libani*)



*Proud and strong grows the Cedar
Like a valiantly commanding leader.
Bringing strength to hearts yearning
Through all woes of time enduring.*

*Cedar see that we, like you,
Never stray from the good and true.
Protect us from our harmful ways.
Let us live in prosperity for all our days.*

*Cedar as your wood feeds our fire,
Let your smoke feed our desire.
Yet ever with valor, goodness, and grace,
Let us all our obstacles face.*

A king stands in his garden overlooking a massive Cedar tree. In one hand he holds a scepter formed from the tree, and in the other, a raw branch.

The smoke from the Cedar tree is powerfully purifying, said to chase away evil, doubt, and nightmares. Carrying a sprig of Cedar attracts wealth and offers protection. It is an ingredient in lust and vitality spells due to its abundance of phallic-shaped needles and pinecones. The Cedar symbolizes greatness, strength, and incorruptibility due to its longevity and resistance to disease.

The King of Wands also possesses an indomitable will and enduring drive. He likely believes himself immune to corruption and justified in all his actions and desires, for better or worse.

Cedar meaning: protection • purification
• strength • goals • devotion

Upright: someone who uses passion and sheer force of will to manifest their vision
• one with passionate authority

Reversed: volatile and demanding
• self-righteous or egotistical leadership

Annotated Bibliography

Many references helped determine the plant selections for this deck, including my own judgment and experience. In general, these three offered the most consistently valuable insight. I highly recommend them for further research

Scott Cunningham, *Cunningham's Encyclopedia of Magical Herbs*

By far the best and most essential source for Magickal uses & correspondences of plants.

S. Theresa 'Dietz, *The Complete Language of Flowers, A Definitive and Illustrated History*

A beautifully designed book filled with a little of both magickal and symbolic / folkloric meaning.

Cheralyn Darcey, *Flowerpaedia 1000 Flowers and Their Meanings*

Short, sweet, and easy to navigate.
Focuses mostly on symbolic meanings.